

Product datasheet for **RC202237**

NRL (NM_006177) Human Tagged ORF Clone

Product data:

Product Type: Expression Plasmids
Product Name: NRL (NM_006177) Human Tagged ORF Clone
Tag: Myc-DDK
Symbol: NRL
Synonyms: D14S46E; NRL-MAF; RP27
Mammalian Cell Selection: Neomycin
Vector: pCMV6-Entry (PS100001)
E. coli Selection: Kanamycin (25 ug/mL)
ORF Nucleotide Sequence: >RC202237 ORF sequence
Red=Cloning site Blue=ORF Green=Tags(s)

TTTTGTAATACGACTCACTATAGGGCGCCGGGAATTCGTCGACTGGATCCGGTACCGAGGAGATCTGCC
GCC**CGATCGCC**

ATGGCCCTGCCCCCAGCCCCCTGGCCATGGAATATGTCAATGACTTTGACTTGATGAAGTTTGAGGTAA
AGCGGGAACCTCTGAGGGCCGACCTGGCCCCCTACAGCCTCACTGGGCTCCACACCTTACAGCTCAGT
GCCTCCTCACCCACCTTCAGTGAACCAGGCATGGTGGGGCAACCGAGGGCACCCGGCCAGGCCTGGAG
GAGCTGTACTGGCTGGCTACCCTGCAGCAGCAGCTGGGGCTGGGAGGCATTGGGGCTGAGTCTGAAG
AGGCCATGGAGCTGCTGCAGGGTCAGGGCCAGTCCCTGTTGATGGGCCCATGGCTACTACCCAGGGAG
CCCAGAGGAGACAGGAGCCAGCACGTCCAGCTGGCAGAGCGGTTTTCCGACGCGGCGCTGGTCTCGATG
TCTGTGCGGGAGCTAAACCGGCAGCTGCGGGGCTGCGGGCGCGACGAGGCGCTGCGGCTGAAGCAGAGGC
GCCGCACGCTGAAGAACC GCGGCTACGCGCAGGCCTGTCGCTCCAAGCGGCTGCAGCAGCGGCGCGGGCT
GGAGGCCGAGCGCGCCCGCTGGCCGCCAGCTGGACGCGCTGCGGGCCGAGGTGGCCCGCTGGCCCGG
GAGCGGATCTCTACAAGGCTCGCTGTGACCGGCTAACCTCGAGCGGCCCGGGTCCGGGGACCCCTCCC
ACCTCTTCCTC

ACGCGTACGCGGCCGCTCGAGCAGAACTCATCTCAGAAGAGGATCTGGCAGCAAATGATATCCTGGATT
ACAAGGATGACGACGATAAGGTTTAA



[View online »](#)

Protein Sequence: >RC202237 protein sequence
 Red=Cloning site Green=Tags(s)

MALPPSPLAMEYVNDFDLMKFEVKREPSEGRPGPPTASLGSTPYSSVPPSPTFSEPGMVGATEGTRPGLE
 ELYWLATLQQQLGAGEALGLSPEEAMELLQGQGPVPVDGPHGYYPGSPEETGAQHVQLAERFSDAALVSM
 SVRELNRQLRGCGRDEALRLKQRRRTLKNRGYAQACRSKRLQRRGLEAERARLAAQLDALRAEVARLAR
 ERDLYKARCDRLTSSGPGSGDPSHLFL

TRTRPLEQKLISEEDLAANDILDYKDDDDKV

Chromatograms: https://cdn.origene.com/chromatograms/mk6265_e07.zip

Restriction Sites: SgfI-MluI

Cloning Scheme:

Cloning sites used for ORF Shuttling:



* The last codon before the Stop codon of the ORF

ACCN: NM_006177

ORF Size: 711 bp

OTI Disclaimer: The molecular sequence of this clone aligns with the gene accession number as a point of reference only. However, individual transcript sequences of the same gene can differ through naturally occurring variations (e.g. polymorphisms), each with its own valid existence. This clone is substantially in agreement with the reference, but a complete review of all prevailing variants is recommended prior to use. [More info](#)

OTI Annotation: This clone was engineered to express the complete ORF with an expression tag. Expression varies depending on the nature of the gene.

Components: The ORF clone is ion-exchange column purified and shipped in a 2D barcoded Matrix tube containing 10ug of transfection-ready, dried plasmid DNA (reconstitute with 100 ul of water).

Reconstitution Method:

1. Centrifuge at 5,000xg for 5min.
2. Carefully open the tube and add 100ul of sterile water to dissolve the DNA.
3. Close the tube and incubate for 10 minutes at room temperature.
4. Briefly vortex the tube and then do a quick spin (less than 5000xg) to concentrate the liquid at the bottom.
5. Store the suspended plasmid at -20°C. The DNA is stable for at least one year from date of shipping when stored at -20°C.

Note: Plasmids are not sterile. For experiments where strict sterility is required, filtration with 0.22um filter is required.

RefSeq: [NM_006177.5](#)

RefSeq Size: 1974 bp

RefSeq ORF: 714 bp

Locus ID: 4901

UniProt ID: [P54845](#)

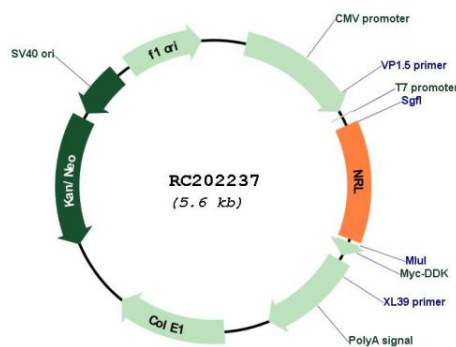
Cytogenetics: 14q11.2-q12

Protein Families: Druggable Genome, Transcription Factors

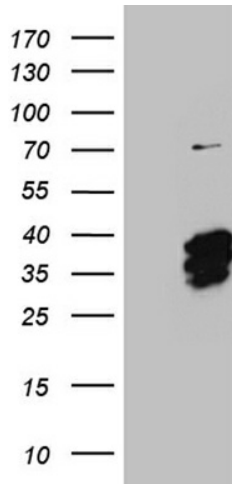
MW: 25.9 kDa

Gene Summary: This gene encodes a basic motif-leucine zipper transcription factor of the Maf subfamily. The encoded protein is conserved among vertebrates and is a critical intrinsic regulator of photoreceptor development and function. Mutations in this gene have been associated with retinitis pigmentosa and retinal degenerative diseases. [provided by RefSeq, Jul 2008]

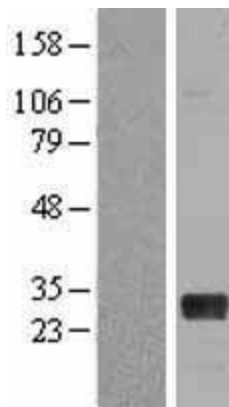
Product images:



Circular map for RC202237



HEK293T cells were transfected with the pCMV6-ENTRY control (Cat# [PS100001], Left lane) or pCMV6-ENTRY NRL (Cat# RC202237, Right lane) cDNA for 48 hrs and lysed. Equivalent amounts of cell lysates (5 ug per lane) were separated by SDS-PAGE and immunoblotted with anti-NRL (Cat# [TA810651])(1:2000). Positive lysates [LY416816] (100ug) and [LC416816] (20ug) can be purchased separately from OriGene.



Western blot validation of overexpression lysate (Cat# [LY416816]) using anti-DDK antibody (Cat# [TA50011-100]). Left: Cell lysates from untransfected HEK293T cells; Right: Cell lysates from HEK293T cells transfected with RC202237 using transfection reagent MegaTran 2.0 (Cat# [TT210002]).