

Product datasheet for RC202228

SLC25A46 (NM_138773) Human Tagged ORF Clone

Product data:

Product Type:	Expression Plasmids
Product Name:	SLC25A46 (NM_138773) Human Tagged ORF Clone
Tag:	Myc-DDK
Symbol:	SLC25A46
Synonyms:	HMSN6B; PCH1E
Mammalian Cell Selection:	Neomycin
Vector:	pCMV6-Entry (PS100001)
E. coli Selection:	Kanamycin (25 ug/mL)
ORF Nucleotide Sequence:	>RC202228 ORF sequence Red=Cloning site Blue=ORF Green=Tags(s)

TTTTGTAATACGACTCACTATAGGGCGGCCGGAATTCGTCGACTGGATCCGGTACCGAGGAGATCTGCC
GCC**CGATCGCC**

ATGCATCCGCGGCCGCCGACGGATTTGATGGCTTGGCTACCGGGTGGTGCCCGGACGAGCAGGGCT
TTGGCGCGCCTTCCCTGCAAGGTCCTCAGCACCGGGTCGGACCTGGCCACTGGGTGACGACTCCCC
AGATATCCCCGGCAGCCGCAACCTGCACCTGGGGCAGAGAAGAGCCCGCCCTACGGCGTGCCACCACCTCC
ACCCCGTACGAAGGCCACGGAGGAACCTTTCCAGTGGCGGGCGCGCAGTGTGCAGGGGCAGAGCA
GTGAACAGCTGAATAGATTTGCTGGATTTGGTATTGGACTTGCAAGTCTCTTACAGAAAATGTACTGGC
ACATCCTTGCATTGTTCTACGCCCAATGTCAGGTTAATTACCATGCTCAGCATTACCATCTCACTCCA
TTTACAGTCATCAATATTATGTACAGTTTCAACAAAACCTCAGGGACCTAGAGCCCTGTGGAAGGAATGG
GAAGTACATTTATTGTCCAGGGAGTCACACTTGGAGCAGAAGGCATAATTAGTGAATTTACACCTTTGCC
AAGGGAGGTTTTACATAAATGGAGTCCTAAACAAATAGGAGAACACCTTCTACTGAAATCCCTAACTTAC
GTGGTGGCAATGCCTTTTTATTCAGCAAGTCTGATTGAAACAGTGCAGAGTGAGATAATTCGAGATAATA
CTGGCATTGTTGGAGTGTGTTAAGAAGGAATTGGAAGAGTGATAGGCATGGGAGTGCCTCATAGCAAACG
ACTTCTCCGCTTCTTTCCTTGATCTTCCCTACGGTCTTCATGGAGTCTTTCATTACATCATCAGCTCA
GTTATTCAGAAGTTTGTCTACTAATTCTAAAGAGAAAGACTTACAATAGCCACCTAGCTGAGAGCACTA
GCCCTGTGCAGAGTATGTTGGATGCTTATTTCCAGAACTTATTGCTAACTTTGCTGCCAGTCTTTGTTT
TGACGTTATACTTTACCCATTGGAACAGTTTTGCACCGCCTTCACATTCAAGGAACACGCACAATAATT
GACAATACAGACCTTGGCTATGAAGTGCTTCCAATTAATACACAATATGAGGGAATGAGAGACTGTATCA
ATACCATAAGGCAGGAGGAAGGAGTGTGTTTTATAAAGGTTTGGTGTGTTATAATACAGTACAC
ACTGCATGCAGCTGTTTTACAGATTACCAAAATATTTACTCTACACTTCTTCAAATAACATT

ACGCGTACGCGGCCGCTCGAGCAGAAAACCTCATCTCAGAAGAGGATCTGGCAGCAAATGATATCCTGGATT
ACAAGGATGACGACGATAAGGTTTAA



[View online >](#)

Reconstitution Method:

1. Centrifuge at 5,000xg for 5min.
2. Carefully open the tube and add 100ul of sterile water to dissolve the DNA.
3. Close the tube and incubate for 10 minutes at room temperature.
4. Briefly vortex the tube and then do a quick spin (less than 5000xg) to concentrate the liquid at the bottom.
5. Store the suspended plasmid at -20°C. The DNA is stable for at least one year from date of shipping when stored at -20°C.

Note: Plasmids are not sterile. For experiments where strict sterility is required, filtration with 0.22um filter is required.

RefSeq: [NM_138773.1](#), [NP_620128.1](#)

RefSeq Size: 2358 bp

RefSeq ORF: 1257 bp

Locus ID: 91137

UniProt ID: [Q96AG3](#)

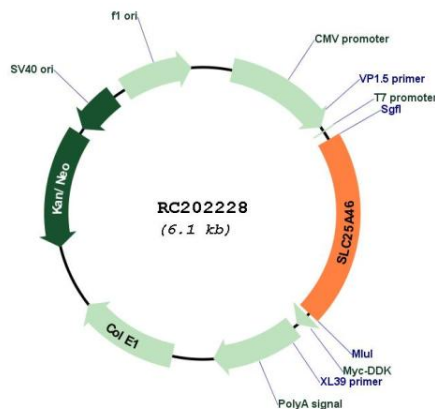
Cytogenetics: 5q22.1

Domains: mito_carr

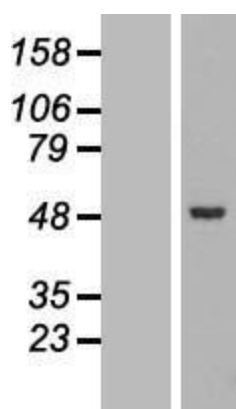
MW: 46.2 kDa

Gene Summary: This gene encodes a mitochondrial solute carrier protein family member. It functions in promoting mitochondrial fission, and prevents the formation of hyperfilamentous mitochondria. Mutation of this gene results in neuropathy and optic atrophy. [provided by RefSeq, Aug 2016]

Product images:



Circular map for RC202228



Western blot validation of overexpression lysate (Cat# [LY408513]) using anti-DDK antibody (Cat# [TA50011-100]). Left: Cell lysates from untransfected HEK293T cells; Right: Cell lysates from HEK293T cells transfected with RC202228 using transfection reagent MegaTran 2.0 (Cat# [TT210002]).