

Product datasheet for RC202223

HYLS1 (NM_145014) Human Tagged ORF Clone

Product data:

Product Type:	Expression Plasmids
Product Name:	HYLS1 (NM_145014) Human Tagged ORF Clone
Tag:	Myc-DDK
Symbol:	HYLS1
Synonyms:	HLS
Mammalian Cell Selection:	Neomycin
Vector:	pCMV6-Entry (PS100001)
E. coli Selection:	Kanamycin (25 ug/mL)
ORF Nucleotide Sequence:	>RC202223 ORF sequence Red=Cloning site Blue=ORF Green=Tags(s)

TTTTGTAATACGACTCACTATAGGGCGCCGGGAATTCGTCGACTGGATCCGGTACCGAGGAGATCTGCC
GCC**CGATCGCC**

ATGGATCCAGAAGAACGAATGTTGGCAGCTGCTACAGCTTTTACCCACATCCGTGCAGGGCAGGGTGAAG
GAGATGTCAGGAGAGAAGCCCAATCTATCCAATATGATCCCTACAGTAAAGCTTCAGTAGCCCCAGGGAA
GCGACCTGCTCTCCTGTGCAACTACAGTACCCACATGTAGAAAGTAATGTCCCTTCAGAAACAGTCTCT
GAGGCCTCCAAAGACTCCGAAAGCCAGTGATGAAGAGAAAGGTGCTGCGCAGAAAGCCAGATGGGGAAG
TATTAGTAACAGATGAGTCGATTATCAGTGAATCAGAATCTGGTACAGAAAATGATCAGGATCTCTGGGA
CTTAAGACAAAGGCTGATGAATGTACAGTTCAGGAAGACAAGGAATCTTCATTTGATGTTTCACAAAAA
TTTAACCTACCACATGAATACCAAGGAATTTCTCAAGATCAGCTCATTTGCTCTTACAAAGAGAAGGAA
TGGGCTCTCCAGCTTACGAACAAGACCTGATTGTTGCCAGCAGACCCAAGTCCTTTATTCTCCCAAAGCT
GGACCAGTTAAGCCGAAACCGGGCAAGACAGACCGGGTAGCCCGGTATTTTGGTACAAACGGGACTGG
GACTCAATACGTTTACCTGGTGAAGATCATAGAAAGGAATTACGCTGGGGTGTCCGAGAGCAGATGCTTT
GTCGAGCAGAACCCCAATCCAAACCTCAGCATATATGTCCCAAACAATTATCTAGTACCAACAGAGAA
GAAAAGGTCTGCACTCCGTTGGGGTGTTCGTTGTGACCTTGCAAATGGTGCATACCCAGGAAGCTTCCC
TTCCCTTTTCTCCTTCT

ACGCGTACGCGGCCGCTCGAGCAGAAACTCATCTCAGAAGAGGATCTGGCAGCAAATGATATCCTGGATT
ACAAGGATGACGACGATAAGGTTTAA



[View online »](#)

Protein Sequence: >RC202223 protein sequence
Red=Cloning site Green=Tags(s)

MDPEERMLAAATAFTHIRAGQGEGDVRREAQSIQYDPYSKASVAPGKRPALPVQLQYPHVESNPSETVS
 EASQRLRKPVMKRKVLRRKPDGEVLVTDESIIESESGTENDQLWDLRQRLMNVQFQEDKESSFDVSK
 FNLPHYQGISQDQLICSLQREGMGSPAYEQDLIVASRPKSFILPKLDQLSRNRGKTRVARYFEYKRDW
 DSIRLPGEDHRKELRWGVREQMLCRAEPQSKPQHIYVPNNYLVPTEKRSALRWGVRCDLANGVI PRKLP
 FPLSPS

TRTRPLEQKLISEEDLAANDILDYKDDDDKV

Chromatograms: https://cdn.origene.com/chromatograms/mk6307_f06.zip

Restriction Sites: SgfI-MluI

Cloning Scheme:



ACCN: NM_145014

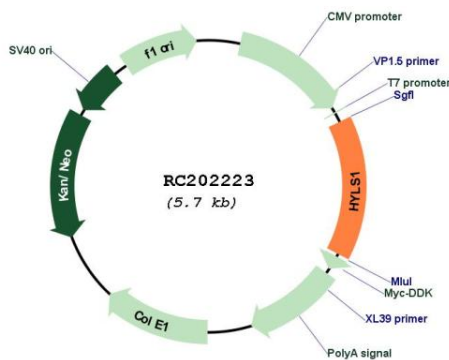
ORF Size: 858 bp

OTI Disclaimer: Due to the inherent nature of this plasmid, standard methods to replicate additional amounts of DNA in E. coli are highly likely to result in mutations and/or rearrangements. Therefore, OriGene does not guarantee the capability to replicate this plasmid DNA. Additional amounts of DNA can be purchased from OriGene with batch-specific, full-sequence verification at a reduced cost. Please contact our customer care team at custsupport@origene.com or by calling 301.340.3188 option 3 for pricing and delivery.

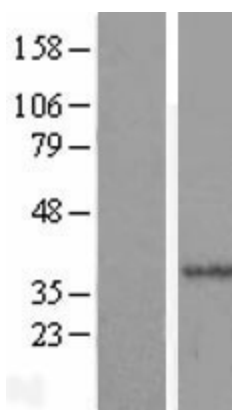
The molecular sequence of this clone aligns with the gene accession number as a point of reference only. However, individual transcript sequences of the same gene can differ through naturally occurring variations (e.g. polymorphisms), each with its own valid existence. This clone is substantially in agreement with the reference, but a complete review of all prevailing variants is recommended prior to use. [More info](#)

OTI Annotation:	This clone was engineered to express the complete ORF with an expression tag. Expression varies depending on the nature of the gene.
Components:	The ORF clone is ion-exchange column purified and shipped in a 2D barcoded Matrix tube containing 10ug of transfection-ready, dried plasmid DNA (reconstitute with 100 ul of water).
Reconstitution Method:	<ol style="list-style-type: none"> 1. Centrifuge at 5,000xg for 5min. 2. Carefully open the tube and add 100ul of sterile water to dissolve the DNA. 3. Close the tube and incubate for 10 minutes at room temperature. 4. Briefly vortex the tube and then do a quick spin (less than 5000xg) to concentrate the liquid at the bottom. 5. Store the suspended plasmid at -20°C. The DNA is stable for at least one year from date of shipping when stored at -20°C.
RefSeq Size:	1829 bp
RefSeq ORF:	900 bp
Locus ID:	219844
UniProt ID:	Q96M11
Cytogenetics:	11q24.2
MW:	32.9 kDa
Gene Summary:	This gene encodes a protein localized to the cytoplasm. Mutations in this gene are associated with hydrolethalus syndrome. Multiple alternatively spliced variants, encoding the same protein, have been identified. [provided by RefSeq, Oct 2008]

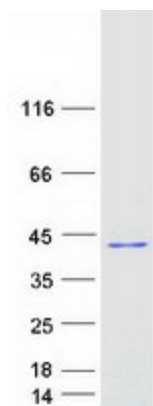
Product images:



Circular map for RC202223



Western blot validation of overexpression lysate (Cat# [LY427495]) using anti-DDK antibody (Cat# [TA50011-100]). Left: Cell lysates from untransfected HEK293T cells; Right: Cell lysates from HEK293T cells transfected with [RC225414] using transfection reagent MegaTran 2.0 (Cat# [TT210002]).



Coomassie blue staining of purified HYLS1 protein (Cat# [TP302223]). The protein was produced from HEK293T cells transfected with HYLS1 cDNA clone (Cat# RC202223) using MegaTran 2.0 (Cat# [TT210002]).