

Product datasheet for RC202217

Endothelin 1 (EDN1) (NM_001955) Human Tagged ORF Clone

Product data:

Product Type: Expression Plasmids
Tag: Myc-DDK
Symbol: Endothelin 1
Synonyms: ARCND3; ET1; HDLCQ7; PPET1; QME
Mammalian Cell Selection: Neomycin
Vector: pCMV6-Entry (PS100001)
E. coli Selection: Kanamycin (25 ug/mL)
ORF Nucleotide Sequence: >RC202217 ORF sequence
 Red=Cloning site Blue=ORF Green=Tags(s)

TTTTGTAAACGACTCACTATAGGGCGGCCGGAATTCGTCGACTGGATCCGGTACCGAGGAGATCTGCC
 GCC**CGGATCGCC**

ATGGATTATTTGCTCATGATTTTCTCTGCTGTTTGTGGCTTGCCAAGGAGCTCCAGAAACAGCAGTCT
 TAGGCGCTGAGCTCAGCGCGGTGGGTGAGAACGGCGGGAGAAACCCACTCCCAGTCCACCCTGGCGGT
 CCGCCGGTCCAAGCGTGCTCCTGCTCGTCCCTGATGGATAAAGAGTGTGTCTACTTCTGCCACCTGGAC
 ATCATTTGGGTCAACACTCCCGAGCACGTTGTTCCGTATGGACTTGGAAGCCCTAGGTCCAAGAGAGCCT
 TGGAGAATTTACTTCCCAAAGGCAACAGACCGTGAGAATAGATGCCAATGTGCTAGCCAAAAAGACAA
 GAAGTGCTGGAATTTTTGCCAAGCAGGAAAAGAACTCAGGGCTGAAGACATTATGGAGAAAGACTGGAAT
 AATCATAAGAAAGGAAAAGACTGTTCCAAGCTTGGGAAAAAGTGTATTTATCAGCAGTTAGTGAGAGGAA
 GAAAAATCAGAAGAAGTTCAGAGGAACACCTAAGACAAACCAGGTGCGAGACCATGAGAAACAGCGTCAA
 ATCATCTTTTCATGATCCCAAGCTGAAAGGCAATCCCTCCAGAGAGCGTTATGTGACCCACAACCGAGCA
 CATTGG

ACGCGTACGCGGCCGCTCGAGCAGAACTCATCTCAGAAGAGGATCTGGCAGCAAATGATATCTGGATT
 ACAAGGATGACGACGATAAGGTTTAA

Protein Sequence: >RC202217 protein sequence
 Red=Cloning site Green=Tags(s)

MDYLLMIFSLLFVACQGAPETA VLGAELSAVGENGGEKPTSPPPWRLRRSKRSCSSLM DKECVYFCHLD
 I I W V N T P E H V P Y G L G S P R S K R A E N L L P T K A T D R E N R C Q C A S Q K D K K C W N F C Q A G K E L R A E D I M E K D W N
 N H K K G K D C S K L G K K C I Y Q Q L V R G R K I R R S E E H L R Q T R S E T M R N S V K S S F H D P K L K G N P S R E R Y V T H N R A
 H W

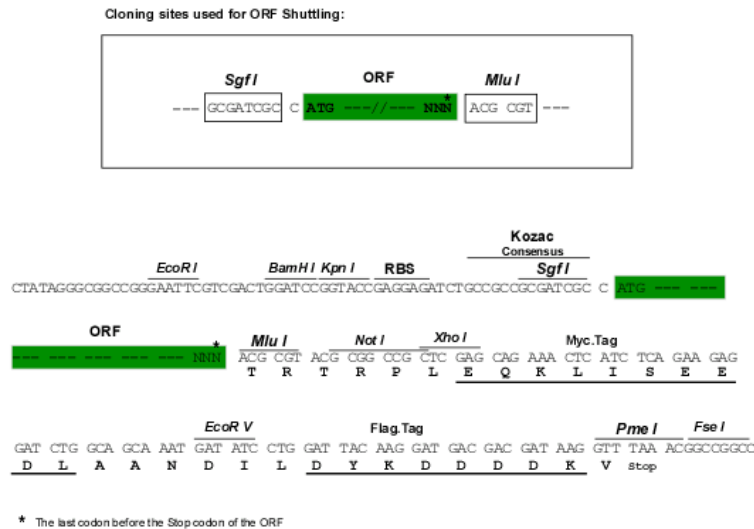
TRTRPLEQKLISEEDLAANDILDYKDDDDKV


[View online »](#)

Chromatograms: https://cdn.origene.com/chromatograms/mk6001_a11.zip

Restriction Sites: SgfI-MluI

Cloning Scheme:



ACCN: NM_001955

ORF Size: 636 bp

OTI Disclaimer: Due to the inherent nature of this plasmid, standard methods to replicate additional amounts of DNA in E. coli are highly likely to result in mutations and/or rearrangements. Therefore, OriGene does not guarantee the capability to replicate this plasmid DNA. Additional amounts of DNA can be purchased from OriGene with batch-specific, full-sequence verification at a reduced cost. Please contact our customer care team at custsupport@origene.com or by calling 301.340.3188 option 3 for pricing and delivery.

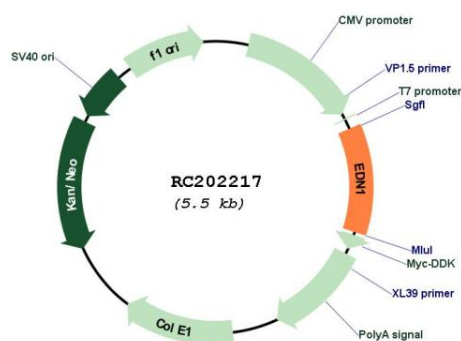
The molecular sequence of this clone aligns with the gene accession number as a point of reference only. However, individual transcript sequences of the same gene can differ through naturally occurring variations (e.g. polymorphisms), each with its own valid existence. This clone is substantially in agreement with the reference, but a complete review of all prevailing variants is recommended prior to use. [More info](#)

OTI Annotation: This clone was engineered to express the complete ORF with an expression tag. Expression varies depending on the nature of the gene.

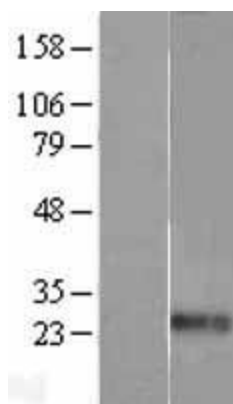
Components: The ORF clone is ion-exchange column purified and shipped in a 2D barcoded Matrix tube containing 10ug of transfection-ready, dried plasmid DNA (reconstitute with 100 ul of water).

Reconstitution Method:	<ol style="list-style-type: none"> 1. Centrifuge at 5,000xg for 5min. 2. Carefully open the tube and add 100ul of sterile water to dissolve the DNA. 3. Close the tube and incubate for 10 minutes at room temperature. 4. Briefly vortex the tube and then do a quick spin (less than 5000xg) to concentrate the liquid at the bottom. 5. Store the suspended plasmid at -20°C. The DNA is stable for at least one year from date of shipping when stored at -20°C.
Note:	Plasmids are not sterile. For experiments where strict sterility is required, filtration with 0.22um filter is required.
RefSeq:	<u>NM_001955.2, NP_001946.2</u>
RefSeq Size:	2112 bp
RefSeq ORF:	639 bp
Locus ID:	1906
UniProt ID:	<u>P05305</u>
Cytogenetics:	6p24.1
Domains:	END
Protein Families:	Druggable Genome, Secreted Protein
Protein Pathways:	Melanogenesis
MW:	24.4 kDa
Gene Summary:	This gene encodes a preproprotein that is proteolytically processed to generate a secreted peptide that belongs to the endothelin/sarafotoxin family. This peptide is a potent vasoconstrictor and its cognate receptors are therapeutic targets in the treatment of pulmonary arterial hypertension. Aberrant expression of this gene may promote tumorigenesis. Alternative splicing results in multiple transcript variants. [provided by RefSeq, Oct 2015]

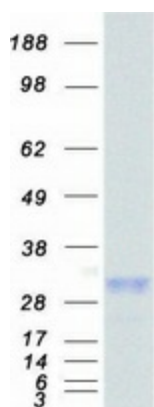
Product images:



Circular map for RC202217



Western blot validation of overexpression lysate (Cat# [LY400720]) using anti-DDK antibody (Cat# [TA50011-100]). Left: Cell lysates from untransfected HEK293T cells; Right: Cell lysates from HEK293T cells transfected with RC202217 using transfection reagent MegaTran 2.0 (Cat# [TT210002]).



Coomassie blue staining of purified EDN1 protein (Cat# [TP302217]). The protein was produced from HEK293T cells transfected with EDN1 cDNA clone (Cat# RC202217) using MegaTran 2.0 (Cat# [TT210002]).