

Product datasheet for RC202216

EMP3 (NM_001425) Human Tagged ORF Clone

Product data:

Product Type: Expression Plasmids
Product Name: EMP3 (NM_001425) Human Tagged ORF Clone
Tag: Myc-DDK
Symbol: EMP3
Synonyms: YMP
Mammalian Cell Selection: Neomycin
Vector: pCMV6-Entry (PS100001)
E. coli Selection: Kanamycin (25 ug/mL)
ORF Nucleotide Sequence: >RC202216 ORF sequence
Red=Cloning site Blue=ORF Green=Tags(s)

TTTTGTAATACGACTCACTATAGGGCGGCCGGAATTCGTCGACTGGATCCGGTACCGAGGAGATCTGCC
GCC**CGATCGCC**

ATGTCACTCCTCTTGGTGGTCTCAGCCCTTACATCCTCATTCTTATACTGCTTTTCGTGGCCACTT
TGGACAAGTCCTGGTGGACTCTCCCTGGGAAAGAGTCCCTGAATCTCGGTACGACTGCACGTGGAACAA
CGACACAAAACATGGGCTGCAGTAATGTCAGCGAGAATGGCTGGCTGAAGCGGTGCAGGTCCTCATG
GTGCTCTCCCTCATTCTCTGCTGTCTCTCTTCATCCTGTTTCAGCTTACACCATGCGACGAG
GAGGTCTCTTCTATGCCACCGGCTCTGCCAGCTTGCACCAGCGTGGCGGTGTTTACTGGCGCCTTGAT
CTATGCCATCCACGCCGAGGAGATCCTGGAGAAGCACCCGCGAGGGGGCAGCTTCGGATACTGCTTCGCC
CTGGCCTGGTGGCTTCCCCCTCGCCCTGGTCAGCGGCATCATCTACATCCACCTACGGAAGCGGGAG

ACGCGTACGCGGCCGCTCGAGCAGAACTCATCTCAGAAGAGGATCTGGCAGCAAATGATATCCTGGATT
ACAAGGATGACGACGATAAGGTTTAA

Protein Sequence: >RC202216 protein sequence
Red=Cloning site Green=Tags(s)

MSLLLLVVSALHILILILLFVATLDKSWWTLPGKESLNLWYDCTWNNDKTKWACSNVSENGWLKAVQVLM
VLSLILCCLSFILFMFQLYTMRRGGLFYATGLCQLCTSVAVFTGALIYAIHAEIELEKHPRRGGSFGYCF
LAWVAFPLALVSGIYIHLRKRE

TRTRPLEQKLISEEDLAANDILDYKDDDDKV

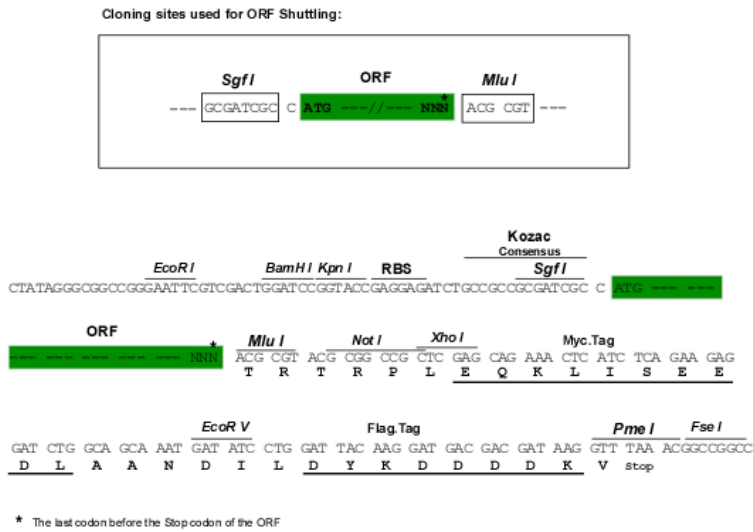
Chromatograms: https://cdn.origene.com/chromatograms/mk6142_e01.zip



[View online >](#)

Restriction Sites: SgfI-MluI

Cloning Scheme:



ACCN: NM_001425

ORF Size: 489 bp

OTI Disclaimer: The molecular sequence of this clone aligns with the gene accession number as a point of reference only. However, individual transcript sequences of the same gene can differ through naturally occurring variations (e.g. polymorphisms), each with its own valid existence. This clone is substantially in agreement with the reference, but a complete review of all prevailing variants is recommended prior to use. [More info](#)

OTI Annotation: This clone was engineered to express the complete ORF with an expression tag. Expression varies depending on the nature of the gene.

Components: The ORF clone is ion-exchange column purified and shipped in a 2D barcoded Matrix tube containing 10ug of transfection-ready, dried plasmid DNA (reconstitute with 100 ul of water).

Reconstitution Method:

1. Centrifuge at 5,000xg for 5min.
2. Carefully open the tube and add 100ul of sterile water to dissolve the DNA.
3. Close the tube and incubate for 10 minutes at room temperature.
4. Briefly vortex the tube and then do a quick spin (less than 5000xg) to concentrate the liquid at the bottom.
5. Store the suspended plasmid at -20°C. The DNA is stable for at least one year from date of shipping when stored at -20°C.

RefSeq: [NM_001425.3](#)

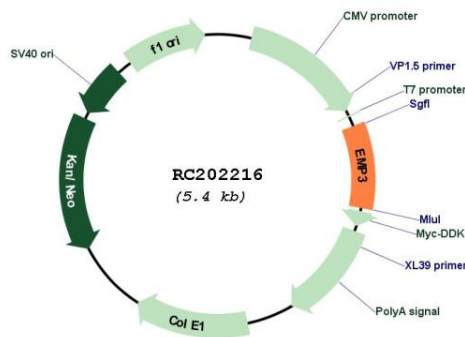
RefSeq Size: 850 bp

RefSeq ORF: 492 bp

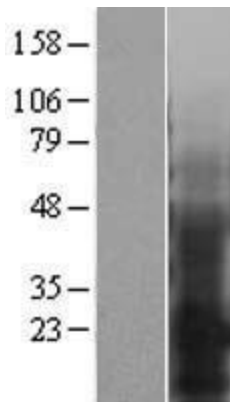
Locus ID: 2014

UniProt ID: [P54852](#)
Cytogenetics: 19q13.33
Domains: PMP22_Claudin
Protein Families: Transmembrane
MW: 18.4 kDa
Gene Summary: The protein encoded by this gene belongs to the PMP-22/EMP/MP20 family of proteins. The protein contains four transmembrane domains and two N-linked glycosylation sites. It is thought to be involved in cell proliferation, cell-cell interactions and function as a tumor suppressor. Alternative splicing results in multiple transcript variants. [provided by RefSeq, Sep 2015]

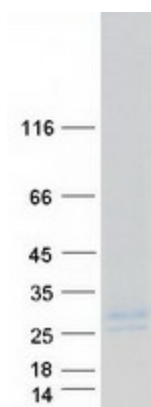
Product images:



Circular map for RC202216



Western blot validation of overexpression lysate (Cat# [LY400554]) using anti-DDK antibody (Cat# [TA50011-100]). Left: Cell lysates from untransfected HEK293T cells; Right: Cell lysates from HEK293T cells transfected with RC202216 using transfection reagent MegaTran 2.0 (Cat# [TT210002]).



Coomassie blue staining of purified EMP3 protein (Cat# [TP302216]). The protein was produced from HEK293T cells transfected with EMP3 cDNA clone (Cat# RC202216) using MegaTran 2.0 (Cat# [TT210002]).