

Product datasheet for **RC202209**

Hsc70 (HSPA8) (NM_006597) Human Tagged ORF Clone

Product data:

Product Type:	Expression Plasmids
Product Name:	Hsc70 (HSPA8) (NM_006597) Human Tagged ORF Clone
Tag:	Myc-DDK
Symbol:	Hsc70
Synonyms:	HEL-33; HEL-S-72p; HSC54; HSC70; HSC71; HSP71; HSP73; HSPA10; LAP-1; LAP1; NIP71
Mammalian Cell Selection:	Neomycin
Vector:	pCMV6-Entry (PS100001)
E. coli Selection:	Kanamycin (25 ug/mL)



[View online »](#)

**ORF Nucleotide
Sequence:**

>RC202209 ORF sequence
 Red=Cloning site Blue=ORF Green=Tags(s)

TTTTGTAATACGACTCACTATAGGGCGGCCGGGAATTCGTCGACTGGATCCGGTACCGAGGAGATCTGCC
 GCC**CGCATCGCC**

ATGTCCAAGGACCTGCAGTTGGTATTGATCTTGGCACCACCTACTCTTGTGTGGGTGTTTTCCAGCAGC
 GAAAAGTCGAGATAATTGCCAATGATCAGGGAAACCGAACCACTCCAAGCTATGTCGCCTTTACGGACAC
 TGAACGGTTGATCGGTGATGCCGCAAAGATCAAGTTGCAATGAACCCCAACACAGTTTTTGTATGCC
 AAACGTCTGATTGGACGCAGATTTGATGATGCTGTTGTCCAGTCTGATATGAAACATTGGCCCTTTATGG
 TGGTGAATGATGCTGGCAGGCCAAGGTCCAAGTAGAATAACAAGGGAGAGACCAAAGCTTCTATCCAGA
 GGAGGTGCTTCTATGTTCTGACAAAGATGAAGGAAATTGCAGAAGCCTACCTTGGGAAGACTGTTACC
 AATGCTGTGGTCACAGTGCCAGCTTACTTTAATGACTCTCAGCGTCAGGCTACCAAAGATGCTGGAAC
 TTGCTGGTCTCAATGTACTTAGAATTATTAATGAGCCAAGTCTGCTGCTATTGCTTACGGCTTAGACAA
 AAAGTTGGAGCAGAAAGAAACGTGCTCATCTTTGACCTGGGAGGTGGCACTTTTGTATGTCAATCCTC
 ACTATTGAGGATGGAATCTTTGAGGTCAAGTCTACAGCTGGAGACACCCACTTGGGTGGAGAAGATTTTG
 ACAACCGAATGGTCAACCATTTTATTGCTGAGTTAAGCGCAAGCATAAGAAGGACATCAGTGAGAACA
 GAGAGCTGAAGACGCCTCCGACTGCTTGTGAACGTGCTAAGCGTACCTCTCTTCCAGCACCCAGGCC
 AGTATTGAGATCGATTCTCTCTATGAAGGAATCGACTTCTATACCTCCATTACCCGTGCCGATTGGAAG
 AACTGAATGCTGACCTGTTCCGTGGCACCTGGACCCAGTAGAGAAAGCCCTTCGAGATGCCAACTAGA
 CAAGTCACAGATTCATGATATTGCTCGTGGTGGTGGTCTACTCGTATCCCCAAGATTCAGAAGCTTCTC
 CAAGACTTCTCAATGGAAAAGAACTGAATAAGAGCATCAACCTGATGAAGCTGTTGCTTATGGTGCAG
 CTGTCCAGGCAGCCATCTTGTCTGGAGACAAGTCTGAGAATGTTCAAGATTTGCTGCTCTTGGATGTCAC
 TCCTCTTTCCCTTGGTATTGAAACTGCTGGTGGAGTCATGACTGTCCTCATCAAGCGTAATACCACCATT
 CCTACCAAGCAGACACAGACCTTCACTACCTATTCTGACAACCAGCCTGGTGTGCTTATTAGGTTTATG
 AAGGCGAGCGTGCCATGACAAAGGATAACAACCTGCTTGGCAAGTTTGAACCTCACAGGCATACCTCCTGC
 ACCCCGAGGTGTTCTCAGATTGAAGTCACTTTTACATTGATGCCAATGGTATACTCAATGTCTCTGCT
 GTGGACAAGAGTACGGGAAAAGAGAACAAGATTACTATCACTAATGACAAGGGCCGTTTGGCAAGGAA
 ACATTGAACGTATGGTCCAGGAAGCTGAGAAGTACAAGCTGAAGATGAGAAGCAGAGGGACAAGGTGTC
 ATCCAAGAATTCACTTGAGTCTATGCCTTCAACATGAAAGCAACTGTTGAAGATGAGAACTTCAAGGC
 AAGATTAACGATGAGGACAAACAGAAGATTCTGGACAAGTGAATGAAATTATCAACTGGCTTGATAAGA
 ATCAGACTGCCGAGAAGGAAGATTTGAACATCAACAGAAAGAGCTGGAGAAAGTTTGAACCCCATCAT
 CACCAAGCTGTACCAGAGTGCAGGAGGCATGCCAGGAGGAATGCCTGGGGGATTTCTGGTGGTGGAGCT
 CCTCCCTCTGGTGGTCTTCTCAGGGCCACCATTGAAGAGTTGAT

ACGCGTACGCGGCCGCTCGAGCAGAAACTCATCTCAGAAGAGGATCTGGCAGCAATGATATCCTGGATT
 ACAAGGATGACGACGATAAGGTTTAA

Protein Sequence: >RC202209 protein sequence
 Red=Cloning site Green=Tags(s)

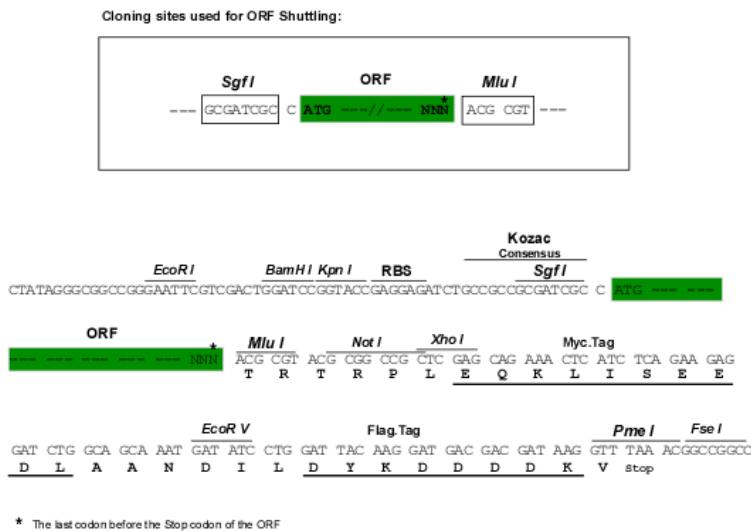
MSKGPVAVGIDLGTTYSCVGVFQHGKVEIIANDQGNRTTPSYVAFDTERLIGDAAKNQVAMNPTNTVFDA
 KRLIGRRFDDAVVQSDMKHWPFMVNDAGRPKVQVEYKGETKSFYPEEVSSMVLTKMKEIAEAYLGKTVT
 NAVVTVPAYFNDSQRQATKDAGTIAGLNLVRIINEPTAAAIAAYGLDKKVAERNVLIIFDLGGGTFDVSIL
 TIEDGIFEVKSTAGDTHLGGEDFNRMVNHFIAEFKRKHKKDISENKRAVRRRLTACERAKRTLSSSTQA
 SIEIDSLYEGIDFYTSITRARFEELNADLFRGTLDPVEKALRDAKLDKSQIHDIVLVGGSTRIPKIQKLL
 QDFNKGKELNKSINPDEAVAYGAAVQAAILSGDKSENVQDLLLDVTPLSLGIETAGGVMTVLIKRNTTI
 PTKQTQTFTTYSDNQPGVLIQVYGERAMTKDNNLLGKFELTGIPPAPRGVQPQIEVTFDIDANGILNVSA
 VDKSTGKENKIIITNDKGRLSKEDIERMVQEAKEYKADEKQRDKVSSKNSLESYAFNMKATVEDEKLQG
 KINDEDKQKILDKCNEIINWLDKNQTAKEEFEHQQKELEKVCNPITTKLYQSAGGMPGGMPGGFPGGGA
 PPSGGASSGPTIEEVD

TRTRPLEQKLISEEDLAANDILDYKDDDDKV

Chromatograms: https://cdn.origene.com/chromatograms/mk6012_a04.zip

Restriction Sites: SgfI-MluI

Cloning Scheme:



ACCN: NM_006597

ORF Size: 1938 bp

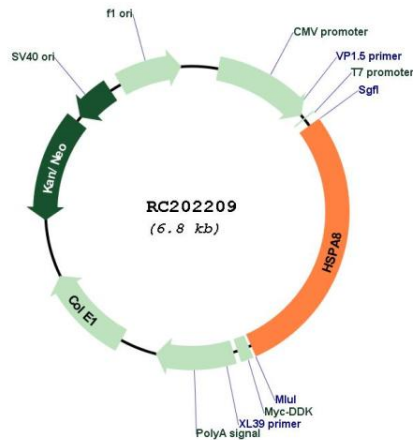
OTI Disclaimer: The molecular sequence of this clone aligns with the gene accession number as a point of reference only. However, individual transcript sequences of the same gene can differ through naturally occurring variations (e.g. polymorphisms), each with its own valid existence. This clone is substantially in agreement with the reference, but a complete review of all prevailing variants is recommended prior to use. [More info](#)

OTI Annotation: This clone was engineered to express the complete ORF with an expression tag. Expression varies depending on the nature of the gene.

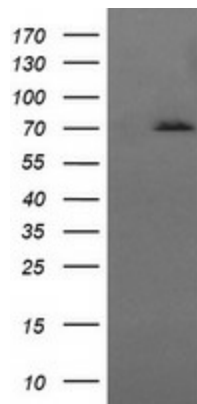
Components: The ORF clone is ion-exchange column purified and shipped in a 2D barcoded Matrix tube containing 10ug of transfection-ready, dried plasmid DNA (reconstitute with 100 ul of water).

Reconstitution Method:	<ol style="list-style-type: none">1. Centrifuge at 5,000xg for 5min.2. Carefully open the tube and add 100ul of sterile water to dissolve the DNA.3. Close the tube and incubate for 10 minutes at room temperature.4. Briefly vortex the tube and then do a quick spin (less than 5000xg) to concentrate the liquid at the bottom.5. Store the suspended plasmid at -20°C. The DNA is stable for at least one year from date of shipping when stored at -20°C.
Note:	Plasmids are not sterile. For experiments where strict sterility is required, filtration with 0.22um filter is required.
RefSeq:	NM_006597.6
RefSeq Size:	2473 bp
RefSeq ORF:	1941 bp
Locus ID:	3312
UniProt ID:	P11142
Cytogenetics:	11q24.1
Domains:	HSP70
Protein Families:	Stem cell - Pluripotency
Protein Pathways:	Antigen processing and presentation, Endocytosis, MAPK signaling pathway, Spliceosome
MW:	70.9 kDa
Gene Summary:	This gene encodes a member of the heat shock protein 70 family, which contains both heat-inducible and constitutively expressed members. This protein belongs to the latter group, which are also referred to as heat-shock cognate proteins. It functions as a chaperone, and binds to nascent polypeptides to facilitate correct folding. It also functions as an ATPase in the disassembly of clathrin-coated vesicles during transport of membrane components through the cell. Alternatively spliced transcript variants encoding different isoforms have been found for this gene. [provided by RefSeq, Aug 2011]

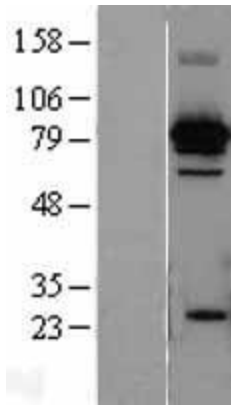
Product images:



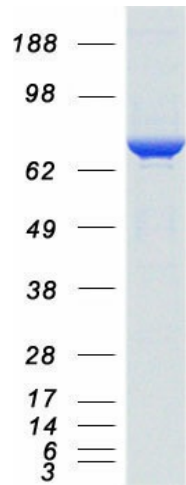
Circular map for RC202209



HEK293T cells were transfected with the pCMV6-ENTRY control (Cat# [PS100001], Left lane) or pCMV6-ENTRY HSPA8 (Cat# RC202209, Right lane) cDNA for 48 hrs and lysed. Equivalent amounts of cell lysates (5 ug per lane) were separated by SDS-PAGE and immunoblotted with anti-HSPA8 (Cat# [TA505966]). Positive lysates [LY401978] (100ug) and [LC401978] (20ug) can be purchased separately from OriGene.



Western blot validation of overexpression lysate (Cat# [LY401978]) using anti-DDK antibody (Cat# [TA50011-100]). Left: Cell lysates from untransfected HEK293T cells; Right: Cell lysates from HEK293T cells transfected with RC202209 using transfection reagent MegaTran 2.0 (Cat# [TT210002]).



Coomassie blue staining of purified HSPA8 protein (Cat# [TP302209]). The protein was produced from HEK293T cells transfected with HSPA8 cDNA clone (Cat# RC202209) using MegaTran 2.0 (Cat# [TT210002]).