

## Product datasheet for **RC202208**

### SSX5 (NM\_021015) Human Tagged ORF Clone

#### Product data:

Product Type: Expression Plasmids  
Product Name: SSX5 (NM\_021015) Human Tagged ORF Clone  
Tag: Myc-DDK  
Symbol: SSX5  
Mammalian Cell Selection: Neomycin  
Vector: pCMV6-Entry (PS100001)  
E. coli Selection: Kanamycin (25 ug/mL)  
ORF Nucleotide Sequence: >RC202208 ORF sequence  
Red=Cloning site Blue=ORF Green=Tags(s)

TTTTGTAATACGACTCACTATAGGGCGGCCGGAATTCGTCGACTGGATCCGGTACCGAGGAGATCTGCC  
GCC**CGATCGCC**

ATGAACGGAGACGATGCCTTTGTACGGAGACCTAGGGTTGGTTCTCAAATACCACAGAAGATGCAAAAGC  
ATCCCTGGAGACAAGTCTGTGACCGTGGAAATACATTTGGTGAATCTCAGTCCGTTCTGGAAGGTGGGAAG  
AGAGCCAGCCAGCAGCATTAAAGCTCTACTGTGTGGCAGGGGAGAAGCTAGGGCCTTCGATGATATTGCC  
AAATACTTCTCTGAGAAAGAGTGGGAAAAGATGAAAGCCTCGGAGAAAATCATCTATGTATATGAAGA  
GAAAGTATGAGGCCATGACTAACTAGGTTTCAAGGCCACCCTCCACCTTTCATGCGTAATAAACGGGT  
CGCAGACTTCCAGGGGAATGATTTTGATAATGACCCTAACCGTGGGAATCAGGTTGAACATCCTCAGATG  
ACTTTCGGCAGGCTCCAGGGAATCTCCCGAAGATCACGCCCGAGAAGCCAGCAGAGGAAGGAAATGATT  
CAAAGGGAGTGCCAGAAGCATCTGGCCACAGAACAATGGGAAACAGCTGCGCCCCTCAGGAAAATAAA  
TACCTCTGAGAAGGTTAACAAGACATCTGGACCCAAAAGGGGAAACATGCCTGGACCCACAGAGTGCCT  
GAGAGAAAGCAACTGGTGATTTATGAAGAGATCAGCGACCCTCAGGAAGATGACGAG

**ACGCGT**ACGCGGCCGCTCGAGCAGAAACTCATCTCAGAAGAGGATCTGGCAGCAAATGATATCCTGGATT  
ACAAGGATGACGACGATAAGGTTTAA

Protein Sequence: >RC202208 protein sequence  
Red=Cloning site Green=Tags(s)

MNGDDAFVRRPRVGSQIPQKMQKHPWRQVCDRGIHLVNLSPFWKVGREPASSIKALLCGRGEARAFDDIA  
KYFSEKEWEKMKASEKIIYVYMKRKYEAMTKLGFKATLPPFMRNKRVAADFQGNDFDNDPNRGNQVEHPQM  
TFGRLQGIFFPKITPEKPAEEGNDSKGVPEASGPQNNKGQLRPSGKLNLTSEKVNKTSKPKRKGKHAWTHRVR  
ERKQLVIYEEISDPQEDDE

**TR**TRPLEQKLISEEDLAANDILDYKDDDDKV

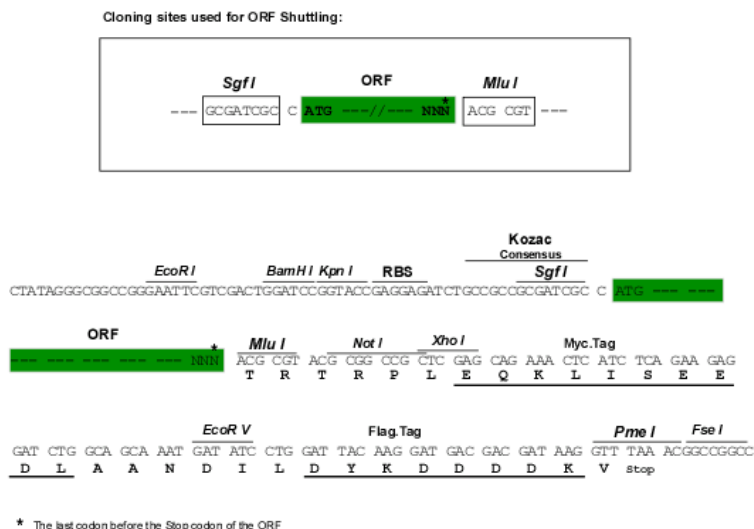


[View online »](#)

**Chromatograms:** [https://cdn.origene.com/chromatograms/mk6310\\_c10.zip](https://cdn.origene.com/chromatograms/mk6310_c10.zip)

**Restriction Sites:** SgfI-MluI

**Cloning Scheme:**



**ACCN:** NM\_021015

**ORF Size:** 687 bp

**OTI Disclaimer:** The molecular sequence of this clone aligns with the gene accession number as a point of reference only. However, individual transcript sequences of the same gene can differ through naturally occurring variations (e.g. polymorphisms), each with its own valid existence. This clone is substantially in agreement with the reference, but a complete review of all prevailing variants is recommended prior to use. [More info](#)

**OTI Annotation:** This clone was engineered to express the complete ORF with an expression tag. Expression varies depending on the nature of the gene.

**Components:** The ORF clone is ion-exchange column purified and shipped in a 2D barcoded Matrix tube containing 10ug of transfection-ready, dried plasmid DNA (reconstitute with 100 ul of water).

**Reconstitution Method:**

1. Centrifuge at 5,000xg for 5min.
2. Carefully open the tube and add 100ul of sterile water to dissolve the DNA.
3. Close the tube and incubate for 10 minutes at room temperature.
4. Briefly vortex the tube and then do a quick spin (less than 5000xg) to concentrate the liquid at the bottom.
5. Store the suspended plasmid at -20°C. The DNA is stable for at least one year from date of shipping when stored at -20°C.

**RefSeq:** [NM\\_021015.2](#)

**RefSeq Size:** 1399 bp

**RefSeq ORF:** 690 bp

**Locus ID:** 6758

UniProt ID: [O60225](#)

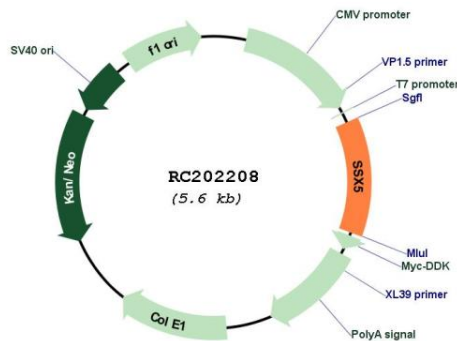
Cytogenetics: Xp11.23

Protein Families: Transcription Factors

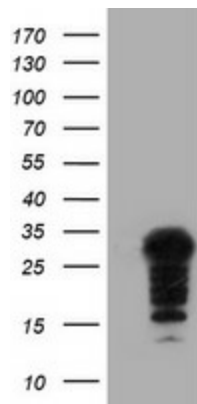
MW: 26.3 kDa

**Gene Summary:** The product of this gene belongs to the family of highly homologous synovial sarcoma X (SSX) breakpoint proteins. These proteins may function as transcriptional repressors. They are also capable of eliciting spontaneous humoral and cellular immune responses in cancer patients, and are potentially useful targets in cancer vaccine-based immunotherapy. While some of the related SSX genes are involved in t(X;18)(p11.2;q11.2) translocations that are characteristically found in all synovial sarcomas, this gene does not appear to be involved in such translocations. Two transcript variants encoding distinct isoforms have been identified for this gene. [provided by RefSeq, Jul 2013]

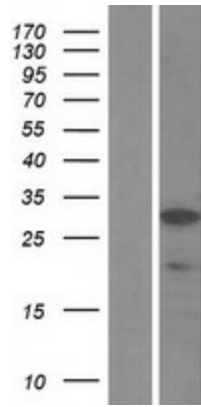
### Product images:



Circular map for RC202208



HEK293T cells were transfected with the pCMV6-ENTRY control (Cat# [PS100001], Left lane) or pCMV6-ENTRY SSX5 (Cat# RC202208, Right lane) cDNA for 48 hrs and lysed. Equivalent amounts of cell lysates (5 ug per lane) were separated by SDS-PAGE and immunoblotted with anti-SSX5 (Cat# [TA504385]). Positive lysates [LY412141] (100ug) and [LC412141] (20ug) can be purchased separately from OriGene.



Western blot validation of overexpression lysate (Cat# [LY412141]) using anti-DDK antibody (Cat# [TA50011-100]). Left: Cell lysates from untransfected HEK293T cells; Right: Cell lysates from HEK293T cells transfected with RC202208 using transfection reagent MegaTran 2.0 (Cat# [TT210002]).



Coomassie blue staining of purified SSX5 protein (Cat# [TP302208]). The protein was produced from HEK293T cells transfected with SSX5 cDNA clone (Cat# RC202208) using MegaTran 2.0 (Cat# [TT210002]).