

## Product datasheet for RC202205

### STYX (NM\_145251) Human Tagged ORF Clone

#### Product data:

Product Type: Expression Plasmids  
Product Name: STYX (NM\_145251) Human Tagged ORF Clone  
Tag: Myc-DDK  
Symbol: STYX  
Mammalian Cell Selection: Neomycin  
Vector: pCMV6-Entry (PS100001)  
E. coli Selection: Kanamycin (25 ug/mL)  
ORF Nucleotide Sequence: >RC202205 ORF sequence  
Red=Cloning site Blue=ORF Green=Tags(s)

TTTTGTAATACGACTCACTATAGGGCGGCCGGAATTCGTCGACTGGATCCGGTACCGAGGAGATCTGCCGCC**CGATCGCC**

ATGGAGGACGTGAAGCTGGAGTTCCTTCCCTTCCACAGTGCAAGGAAGACGCCGAGGAGTGGACCTACCCTATGAGACGAGAGATGCAGGAAATTTACCTGGATTGTTCTTAGGCCATATTCATCTGCTATGAAAAGCAAGCTACCTGTACTACAGAAACATGGAATAACCCATATAATATGCATACGACAAAATATTGAAGCAAATTTATTAACCAAACCTTCAGCAGTTATTTAGATATTTAGTCTGGATATTGCAGATAATCCAGTTGAAATATAAATACGTTTTTCCCTATGACTAAGGAATTTATTGATGGAGCTTACAAATGGGAGGAAAAGTTCTGTGCATGGAAATGCAGGGATCTCCAGAAGTGCAGCCTTTGTTATTGCATACATTATGGAAACATTTGGATGAAGTACAGAGATGCTTTTGCTTATGTTCAAGAAAGAAGATTTGTATTAATCCTAATGCTGGATTTGTCCATCAACTTCAGGAATATGAAGCCATCTACCTAGCAAATTAACAATACAGATGATGTCAACCACTCCAGATAGAAAGGTCATTATCTGTTCACTTCTGGTACCACAGGCAGTTTGAAGAGAACACATGAAGAAGAGGATGATTTTGAACCATGCAAGTGGCGACTGCACAGAATGGC

**ACGCGT**ACGCGGCCGCTCGAGCAGAAACTCATCTCAGAAGAGGATCTGGCAGCAAATGATATCCTGGATTACAAGGATGACGACGATAAGGTTTAA

Protein Sequence: >RC202205 protein sequence  
Red=Cloning site Green=Tags(s)

MEDVKLEFPSLPQCKEDAEEWTYPMRREMQEILPGLFLGPYSSAMKSKLPVLQKHGITHIICIRQNIKANFIKPNFQQLFRYLVLADIADNPVENIIRFFPMTKEFIDGSLQMGGKVLVHGNAGISRSAAFVIAYIMETFGMKYRDAFAYVQERRFCINPNAGFVHQLQEYEAIYLAKLTIQMMSPLQIERSLSVHSGTTGSLKRTHEEEDDFGTMQVATAQNG

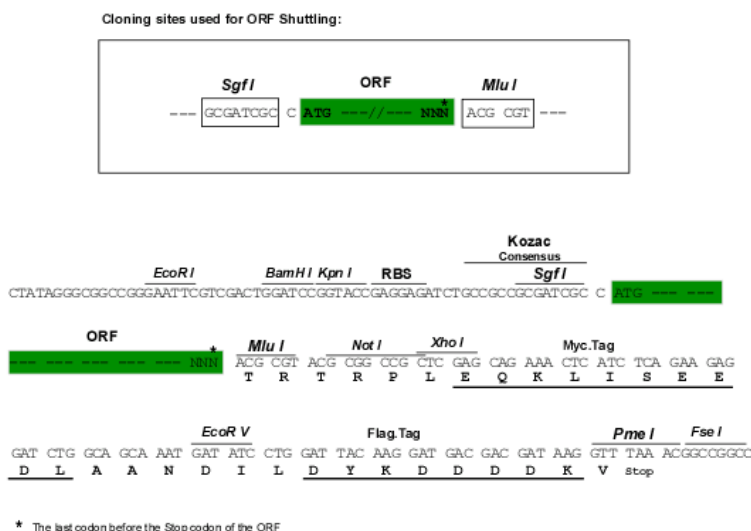
**TRTRP**LEQKLISEEDLAANDILDYKDDDDKV



Chromatograms: [https://cdn.origene.com/chromatograms/mk6306\\_d10.zip](https://cdn.origene.com/chromatograms/mk6306_d10.zip)

Restriction Sites: SgfI-MluI

Cloning Scheme:



ACCN: NM\_145251

ORF Size: 669 bp

OTI Disclaimer: The molecular sequence of this clone aligns with the gene accession number as a point of reference only. However, individual transcript sequences of the same gene can differ through naturally occurring variations (e.g. polymorphisms), each with its own valid existence. This clone is substantially in agreement with the reference, but a complete review of all prevailing variants is recommended prior to use. [More info](#)

OTI Annotation: This clone was engineered to express the complete ORF with an expression tag. Expression varies depending on the nature of the gene.

Components: The ORF clone is ion-exchange column purified and shipped in a 2D barcoded Matrix tube containing 10ug of transfection-ready, dried plasmid DNA (reconstitute with 100 ul of water).

Reconstitution Method:

1. Centrifuge at 5,000xg for 5min.
2. Carefully open the tube and add 100ul of sterile water to dissolve the DNA.
3. Close the tube and incubate for 10 minutes at room temperature.
4. Briefly vortex the tube and then do a quick spin (less than 5000xg) to concentrate the liquid at the bottom.
5. Store the suspended plasmid at -20°C. The DNA is stable for at least one year from date of shipping when stored at -20°C.

RefSeq: [NM\\_145251.4](#)

RefSeq Size: 4879 bp

RefSeq ORF: 672 bp

Locus ID: 6815

UniProt ID: [Q8WUJ0](#)

Cytogenetics: 14q22.1

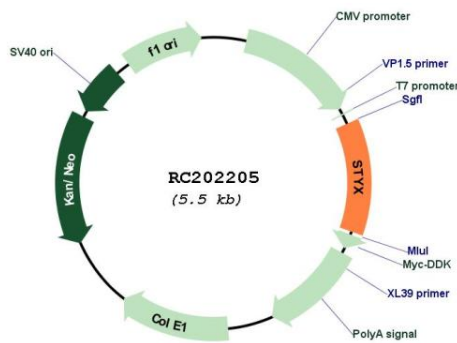
Domains: DSPc

Protein Families: Druggable Genome, Phosphatase

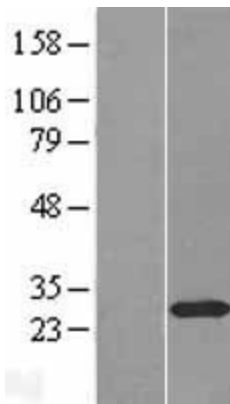
MW: 25.5 kDa

**Gene Summary:** The protein encoded by this gene is a pseudophosphatase, able to bind potential substrates but lacking an active catalytic loop. The encoded protein may be involved in spermiogenesis. Two transcript variants encoding the same protein have been found for these genes. [provided by RefSeq, Oct 2011]

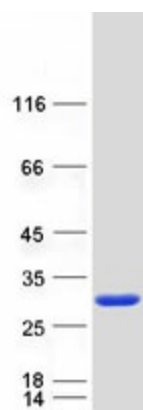
**Product images:**



Circular map for RC202205



Western blot validation of overexpression lysate (Cat# [LY427250]) using anti-DDK antibody (Cat# [TA50011-100]). Left: Cell lysates from untransfected HEK293T cells; Right: Cell lysates from HEK293T cells transfected with [RC225273] using transfection reagent MegaTran 2.0 (Cat# [TT210002]).



Coomassie blue staining of purified STYX protein (Cat# [TP302205]). The protein was produced from HEK293T cells transfected with STYX cDNA clone (Cat# RC202205) using MegaTran 2.0 (Cat# [TT210002]).