

Product datasheet for RC202196

RAB38 (NM_022337) Human Tagged ORF Clone

Product data:

| | |
|---------------------------|-------------------------------------------------------------------|
| Product Type: | Expression Plasmids |
| Product Name: | RAB38 (NM_022337) Human Tagged ORF Clone |
| Tag: | Myc-DDK |
| Symbol: | RAB38 |
| Synonyms: | NY-MEL-1; rrGTPbp |
| Mammalian Cell Selection: | Neomycin |
| Vector: | pCMV6-Entry (PS100001) |
| E. coli Selection: | Kanamycin (25 ug/mL) |
| ORF Nucleotide Sequence: | >RC202196 ORF sequence Red=Cloning site Blue=ORF Green=Tags(s) |

TTTTGTAATACGACTCACTATAGGGCGGCCGGAATTCGTCGACTGGATCCGGTACCGAGGAGATCTGCC
GCC**CGATCGCC**

ATGCAGGCCCGCACAAAGGAGCACCTGTACAAGTTGCTGGTGATTGGCGACCTGGGCGTGGGAAGACCA
GTATCATCAAGCGCTACGTGCACCAGAATTCTCCTCGCACTACCGGGCCACAATCGGCGTGGACTTCGC
GCTCAAGGTGCTCCACTGGGACCCGAGACTGTGGTGCCTGCAGCTCTGGGATATCGCAGGTCAAGAA
AGATTTGAAACATGACGAGGGTCTATTACCGAGAAGCTATGGGTGCATTTATTGTCTTCGATGTCACCA
GGCCAGCCACATTTGAAGCAGTGGCAAAGTGGAAAAATGATTTGGACTCCAAGTTAAGTCTCCCTAATGG
CAAACCGTTTCAGTGGTTTTGTTGGCCAACAAATGTGACCAGGGGAAGGATGTGCTCATGAACAATGGC
CTCAAGATGGACCAGTTCTGCAAGGAGCACGGTTTCGTAGGATGGTTTGAACATCAGCAAAGGAAAATA
TAAACATTGATGAAGCCTCCAGATGCCTGGTGAACACATACTTGCAAATGAGTGTGACCTAATGGAGTC
TATTGAGCCGGACGTCGTGAAGCCCCATCTCACATCAACCAAGGTTGCCAGCTGCTCTGGCTGTGCCAAA
TCC

ACGCGTACGCGGGCGCTCGAGCAGAAACTCATCTCAGAAGAGGATCTGGCAGCAAATGATATCCTGGATT
ACAAGGATGACGACGATAAGGTTTAA



[View online »](#)

Protein Sequence: >RC202196 protein sequence
Red=Cloning site Green=Tags(s)

MQAPHKEHLYKLLVIGDLGVGKTSIIKRYVHQNFSSHYRATIGVDFALKVLHWDPETVVRLQLWDIAGQE
 RFGNMTRVYYREAMGAFIVFDVTRPATFEAVAKWKNLDSKLSLPLNGKPVSVVLLANKCDQGDVLMNNG
 LKMDQFCKEHGFVGFWETSAKENINIDEASRCLVKHILANECDLMESIEPDVVKPHLTSTKVASCSCGCAK
 S

TRTRPLEQKLISEEDLAANDILDYKDDDDKV

Chromatograms: https://cdn.origene.com/chromatograms/mk6307_c11.zip

Restriction Sites: SgfI-MluI

Cloning Scheme:



ACCN: NM_022337

ORF Size: 633 bp

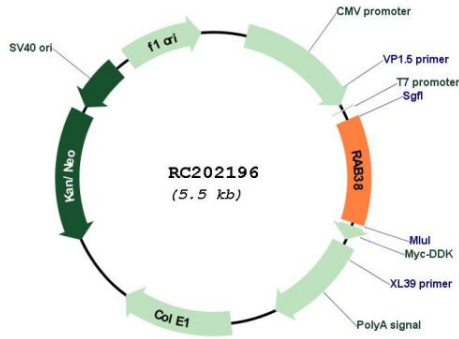
OTI Disclaimer: The molecular sequence of this clone aligns with the gene accession number as a point of reference only. However, individual transcript sequences of the same gene can differ through naturally occurring variations (e.g. polymorphisms), each with its own valid existence. This clone is substantially in agreement with the reference, but a complete review of all prevailing variants is recommended prior to use. [More info](#)

OTI Annotation: This clone was engineered to express the complete ORF with an expression tag. Expression varies depending on the nature of the gene.

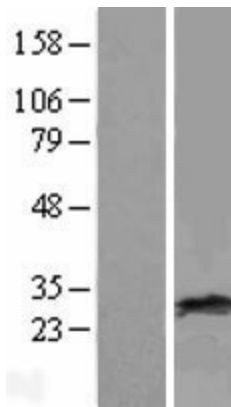
Components: The ORF clone is ion-exchange column purified and shipped in a 2D barcoded Matrix tube containing 10ug of transfection-ready, dried plasmid DNA (reconstitute with 100 ul of water).

| | |
|-------------------------------|----------------------------------------------------------------------------------------------------------------------------------------------------------------------------------------------------------------------------------------------------------------------------------------------------------------------------------------------------------------------------------------------------------------------------------------------------------------------------------------------------------------------------------------------------------------------------------------------------------------------------------------------------------------------------------------------------------------------------------|
| Reconstitution Method: | <ol style="list-style-type: none">1. Centrifuge at 5,000xg for 5min.2. Carefully open the tube and add 100ul of sterile water to dissolve the DNA.3. Close the tube and incubate for 10 minutes at room temperature.4. Briefly vortex the tube and then do a quick spin (less than 5000xg) to concentrate the liquid at the bottom.5. Store the suspended plasmid at -20°C. The DNA is stable for at least one year from date of shipping when stored at -20°C. |
| RefSeq: | NM_022337.1 , NP_071732.1 |
| RefSeq Size: | 1479 bp |
| RefSeq ORF: | 636 bp |
| Locus ID: | 23682 |
| UniProt ID: | P57729 |
| Cytogenetics: | 11q14.2 |
| Domains: | ras, RAN, RAS, RHO, RAB |
| Protein Families: | Druggable Genome |
| MW: | 23.7 kDa |
| Gene Summary: | May be involved in melanosomal transport and docking. Involved in the proper sorting of TYRP1. Involved in peripheral melanosomal distribution of TYRP1 in melanocytes; the function, which probably is implicating vesicle-trafficking, includes cooperation with ANKRD27 and VAMP7 (By similarity). Plays a role in the maturation of phagosomes that engulf pathogens, such as S.aureus and M.tuberculosis (PubMed:21255211). Plays an important role in the control of melanin production and melanosome biogenesis (PubMed:23084991). In concert with RAB32, regulates the proper trafficking of melanogenic enzymes TYR, TYRP1 and DCT/TYRP2 to melanosomes in melanocytes (By similarity).[UniProtKB/Swiss-Prot Function] |

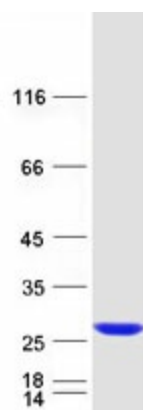
Product images:



Circular map for RC202196



Western blot validation of overexpression lysate (Cat# [LY411709]) using anti-DDK antibody (Cat# [TA50011-100]). Left: Cell lysates from untransfected HEK293T cells; Right: Cell lysates from HEK293T cells transfected with RC202196 using transfection reagent MegaTran 2.0 (Cat# [TT210002]).



Coomassie blue staining of purified RAB38 protein (Cat# [TP302196]). The protein was produced from HEK293T cells transfected with RAB38 cDNA clone (Cat# RC202196) using MegaTran 2.0 (Cat# [TT210002]).