

Product datasheet for **RC202193**

IFI16 (NM_005531) Human Tagged ORF Clone

Product data:

Product Type:	Expression Plasmids
Product Name:	IFI16 (NM_005531) Human Tagged ORF Clone
Tag:	Myc-DDK
Symbol:	IFI16
Synonyms:	IFNGIP1; PYHIN2
Mammalian Cell Selection:	Neomycin
Vector:	pCMV6-Entry (PS100001)
E. coli Selection:	Kanamycin (25 ug/mL)



[View online »](#)

ORF Nucleotide Sequence:

>RC202193 representing NM_005531.
 Blue=ORF Red=Cloning site Green=Tag(s)

```

GCTCGTTTAGTGAACCGTCAGAATTTTGTAAACGACTCACTATAGGGCGGCCGGGAATTCGTGCGACTG
GATCCGGTACCGAGGAGATCTGCCGCCACGATCGCC
ATGGGAAAAAAAAACAAGAACATTGTTCTACTAAAAGGATTAGAGGTCATCAATGATTATCATTTTAGA
ATGGTTAAGTCCTTACTGAGCAACGATTTAAACTTAATTTAAAAATGAGAGAAGAGTATGACAAAATT
CAGATTGCTGACTTGATGGAAGAAAAGTTCCGAGGTGATGCTGGTTTGGGCAAATAATAAAAAATTTTC
GAAGATATACCAACGCTTGAAGACCTGGCTGAAACTCTTAAAAAAGAAAAGTTAAAAAGTAAAGGACCA
GCCCTATCAAGAAAGAGGAAGAAGGAAGTGGATGCTACTTACCTGCACCCTCCACAAGCAGCACTGTC
AAAAGTGAAGGAGCAGAGGCAACTCCTGGAGCTCAGAAAAGAAAAAATCAACCAAGAAAAGGCTGGA
CCCAAAGGGAGTAAGGTGTCGAGGAACAGACTCAGCCTCCCTCTCCTGCAGGAGCCGGCATGTCCACA
GCCATGGGCCGTTCCCATCTCCAAGACCTCATTGTCAGCTCCACCAACACTTCTTCACTGAGAAC
CCGAAAACAGTGGCCAAATGTCAGGTAACCTCCAGAAGAAATGTTCTCAAAAACGCCCAGTGATAGTG
AAGGTACTGAGTACAACAAGCCATTTGAATATGAGACCCAGAATGGAGAAAAAATAATGTTTCAT
GCTACAGTGGCTACACAGACACAGTTCTCCATGTGAAGGTTTTAAACACCAGCTTGAAGGAGAAATTC
AATGGAAGAAAATCATCATCATATCAGATTATTTGGAATATGATAGTCTCCTAGAGGTCATGAAGAA
TCTACTGTATCTGAAGCTGGTCTAACCACGTTTGAGGTTCCAAATAAAATCATCAACAGAGCAAAG
GAAACTCTGAAGATTGATATTCTTCAAAAACAGCTTCAGGAAATATTGTATATGGGGTATTTATGCTA
CATAAGAAAACAGTAAATCAGAAGACCACAATCTACGAAATTCAGGATGATAGAGGAAAAATGGATGTA
GTGGGGACAGGACAATGTCACAATATCCCTGTGAAGAAGGAGATAAGCTCCAATTTTCTGCTTTCGA
CTTAGAAAAAGAACCAGATGTCAAACCTGATTTAGAAATGCATAGTTTTATCCAGATAAAGAAAAAA
ACAAAACCCGAGAAAACAATGACCCCAAGAGCATGAAGCTACCCAGGAACAGAGTCAGCTTCCAAATCCT
TCAGAGGCCAGCACAACTTCCCTGAGAGCCATCTTCGGACTCCTCAGATGCCACCAACAACCTCCATCC
AGCAGTTTCTTACCAAGAAAAGTGAAGACACAATCTCCAAAATGAATGACTTTCATGAGGATGCAGATA
CTGAAGGAAGGGAGTCATTTTCCAGGACGTTTCATGACCAGCATAGGCCAGCTGAGAGCCATCCCCAC
ACTCCTCAGATGCCTCCATCAACACCAAGCAGCAGTTTCTTAACCAGTTGAAACCAAGACTGAAGACT
GAACCTGAAGAAGTTTCCATAGAAGACAGTGCCAGAGTGACCTCAAAGAAGTATGGTGTGACGCA
ACAGAATCATTGTATATGAGCCAAAGAGCAGAAGAAAATGTTTCATGCCACAGTGGCAACTGAGAA
GAAGTCTTCCGAGTGAAGGTTTTAATATTGACCTAAAGGAGAAGTTCACCCCAAAGAAGATCATTGCC
ATAGCAAATTATGTTTCCGCAATGGGTTCTGGAGGTATATCCTTTCACTTGTGGCTGATGTGAAT
GCTGACCGAAACATGGAGATCCCAAAAGGATTGATTAGAAGTGCCAGCGTAACTCCTAAAATCAATCAG
CTTTGCTCACAACTAAAGGAAGTTTTGTGAATGGGGTGTGGAGGTACATAAGAAAAATGTAAGGGGT
GAATTCACCTATTATGAAATACAAGATAATACAGGGAAGATGGAAGTGGTGGTGCATGGACGACTGACC
ACAATCAACTGTGAGGAAGGAGATAAACTGAAACTCACCTGCTTTGAATTGGCACCGAAAAGTGGGAAT
ACCGGGGAGTTGAGATCTGTAATTCATAGTCACATCAAGGTCATCAAGACCAGGAAAAACAAGAAAGAC
ATACTCAATCCTGATTCAAGTATGGAACTTCACCAGACTTTTTCTTC
ACGCGTACGCGGCCGCTCGAGCAGAAACTCATCTCAGAAGAGGATCTGGCAGCAAATGATATCCTGGAT
TACAAGGATGACGACGATAAGGTTTAAACGGCCGGC
  
```

Protein Sequence: >Peptide sequence encoded by RC202193
 Blue=ORF Red=Cloning site Green=Tag(s)

MGKYYKNIIVLLKGLEVIN DYHFRMVKSLLSNDLKLNLKMREEYDKIQIADLMEEKFRGDAGLGKLIKIF
 EDIPTLEDLAETLKKKELKVKGPALSRKRKKEVDATSPAPSTSSTVKTEGAEATPGAQRKSTKEKAG
 PKGSKVSEEQTPPPAGAGMSTAMGRSPSPKTSLSAPPNTSSTENPKTVAKCQVTPRRNVLQKRPVIV
 KVLSTTKPFEYETPEMEKKIMFHATVATQTQFFHVKVLNTSLKEKFNKKIIISDYLEYDSLLEVNEE
 STVSEAGPNQTFEVPNKIINRAKETLKDILHKQASGNIYGVFMLHKKTVNQKTTIYEIQDDRGMKV
 VGTGQCCHNIPCEEGLQLFCFRLRKKNQMSKLI SEMHSFIQIKKKTNPRNNDPKSMKLPQEQSQLPNP
 SEASTTFPESHLRTPQMPTTPSSSFFTKKSEDTISKMNDFMRMQILKEGSHFPGFMTSIGPAESHPH
 TPQMPPSTPSSSFLTTLKPRLKTEPEEVSIEDSAQSDLKEVMVLNATESFVYEPKEQKMFHATVATEN
 EVFRVKVFNIDLKEKFTPKKIIAIANYVCRNGFLEVYPFTLVADVADRMEIPKGLIRSASVTPKINQ
 LCSQTKGSFVNGVFEVHKKNVRGEFTYIEIQDNTGKMEVVHGRLLTINCEEGLKLCFELAPKSGN
 TGELRSVIHSHIKVIKTRKNKIDILNPDSMETSPDFFF
 TRTRPLEQKLI SEEDLAANDILDYKDDDDKV

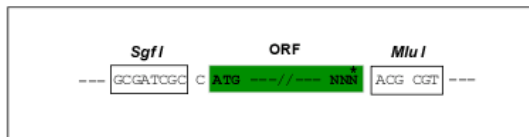
Recombinant protein using RC202193 also available, [TP302193](#)

Chromatograms: https://cdn.origene.com/chromatograms/mk6139_f05.zip

Restriction Sites: SgfI-MluI

Cloning Scheme:

Cloning sites used for ORF Shuttling:



* The last codon before the Stop codon of the ORF

ACCN: NM_005531

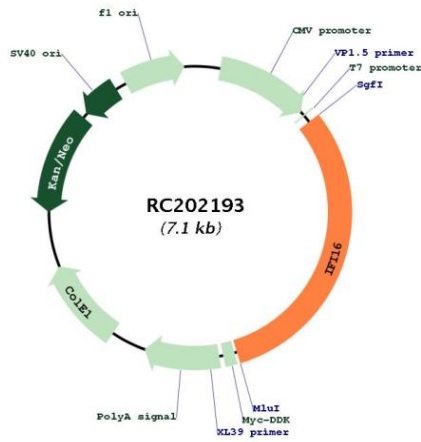
ORF Size: 2187 bp

OTI Disclaimer: The molecular sequence of this clone aligns with the gene accession number as a point of reference only. However, individual transcript sequences of the same gene can differ through naturally occurring variations (e.g. polymorphisms), each with its own valid existence. This clone is substantially in agreement with the reference, but a complete review of all prevailing variants is recommended prior to use. [More info](#)

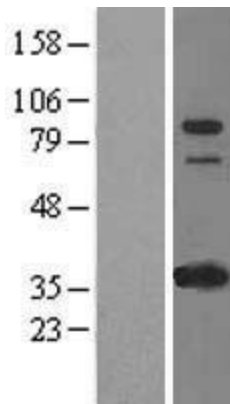
OTI Annotation: This clone was engineered to express the complete ORF with an expression tag. Expression varies depending on the nature of the gene.

Components:	The ORF clone is ion-exchange column purified and shipped in a 2D barcoded Matrix tube containing 10ug of transfection-ready, dried plasmid DNA (reconstitute with 100 ul of water).
Reconstitution Method:	<ol style="list-style-type: none">1. Centrifuge at 5,000xg for 5min.2. Carefully open the tube and add 100ul of sterile water to dissolve the DNA.3. Close the tube and incubate for 10 minutes at room temperature.4. Briefly vortex the tube and then do a quick spin (less than 5000xg) to concentrate the liquid at the bottom.5. Store the suspended plasmid at -20°C. The DNA is stable for at least one year from date of shipping when stored at -20°C.
Note:	Plasmids are not sterile. For experiments where strict sterility is required, filtration with 0.22um filter is required.
RefSeq Size:	2709 bp
RefSeq ORF:	2190 bp
Locus ID:	3428
UniProt ID:	Q16666
Cytogenetics:	1q23.1
Domains:	PAAD_DAPIN, HIN
Protein Families:	Transcription Factors
MW:	82 kDa
Gene Summary:	This gene encodes a member of the HIN-200 (hematopoietic interferon-inducible nuclear antigens with 200 amino acid repeats) family of cytokines. The encoded protein contains domains involved in DNA binding, transcriptional regulation, and protein-protein interactions. The protein localizes to the nucleoplasm and nucleoli, and interacts with p53 and retinoblastoma-1. It modulates p53 function, and inhibits cell growth in the Ras/Raf signaling pathway. Alternatively spliced transcript variants encoding different isoforms have been found for this gene. [provided by RefSeq, Apr 2011]

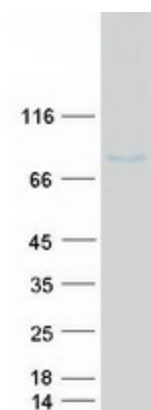
Product images:



Circular map for RC202193



Western blot validation of overexpression lysate (Cat# [LY401699]) using anti-DDK antibody (Cat# [TA50011-100]). Left: Cell lysates from untransfected HEK293T cells; Right: Cell lysates from HEK293T cells transfected with RC202193 using transfection reagent MegaTran 2.0 (Cat# [TT210002]).



Coomassie blue staining of purified IFI16 protein (Cat# [TP302193]). The protein was produced from HEK293T cells transfected with IFI16 cDNA clone (Cat# RC202193) using MegaTran 2.0 (Cat# [TT210002]).