

## Product datasheet for **RC202187**

### DLX4 (NM\_138281) Human Tagged ORF Clone

#### Product data:

Product Type:	Expression Plasmids
Product Name:	DLX4 (NM_138281) Human Tagged ORF Clone
Tag:	Myc-DDK
Symbol:	DLX4
Synonyms:	BP1; DLX7; DLX8; DLX9; OFC15
Mammalian Cell Selection:	Neomycin
Vector:	pCMV6-Entry (PS100001)
E. coli Selection:	Kanamycin (25 ug/mL)
ORF Nucleotide Sequence:	>RC202187 ORF sequence Red=Cloning site Blue=ORF Green=Tags(s)

TTTTGTAATACGACTCACTATAGGGCGGCCGGAATTCGTCGACTGGATCCGGTACCGAGGAGATCTGCC  
GCC**CGATCGCC**

ATGACCTCTTTGCCCTGCCCCCTCCCCGGCCGGGACGCCTCCAAAGCTGTCTTCCCAGACCTCGCCCCTG  
TCCCGTCGGTAGCGGCTGCCTACCCGCTTGCTTGTCCCCTACAACCGCAGCCTCCCCAATTTGTCCTA  
CTCCAGGCCGTATGGCCACCTCTGTCTTACCCCTACACCGAGCCAGCGAACCCCGGAGACTCCTACCTG  
TCCTGCCAGCAACCCGCGGCTCTCTCAGCCCCTCTGCGGACCTGCAGAGCACCCCTCAGGAACTCGAGG  
CAGACTCGGAGAAGCCGGCTGTCCCCGGAACCTCCGAGCGGGCCCTCAGGCCCCGCCAAAAGCT  
CCGAAGCCGAGGACCATCTACTCCAGCCTGCAGCTGCAGCACCTAAACCGGTTTCCAGCACACGCGAG  
TACCTGGCGCTGCCCGAGAGGGCCAGCTGGCAGCGCAGCTCGGCCTCACCCAGACCCAGGTAAGATCT  
GGTTTCAGAACAAACGCTCCAAGTATAAGAAGCTCCTGAAGCAGAATTCTGGGGGCAGGAAGGGGACTT  
CCCTGGGAGGACCTTCTCTGTGTCTCCCTGCTCCCCACCCTCCCTCCCTCTGGGATCTACCCAAGGCA  
GGGACCCTGCCACCAGTGGCTATGGCAACAGCTTGGAGCCTGGTATCAGCATCACTCCTCAGATGTCC  
TGGCTTCGCTCAGATGATG

**ACGCGT**ACGCGGCCGCTCGAGCAGAACTCATCTCAGAAGAGGATCTGGCAGCAAATGATATCCTGGATT  
ACAAGGATGACGACGATAAGGTTTAA



[View online »](#)

**Protein Sequence:** >RC202187 protein sequence  
Red=Cloning site Green=Tags(s)

MTSLPCPLPGRDASKAVFPDLAPVPSVAAAAYPLGLSPTTAASPNSYSRYPYGHLLSYPYTEPANPGDSYL  
 SCQQPAALSQPLCGPAEHPQLEADSEKPRLSPEPSERRPQAPAKKLRKPRTIYSSLQLQHLNQRFHQTQ  
 YLALPERAQLAAQLGLTQTQVKIWFQNKRSKYKLLKQNSGGQEGDFPGRTFVSPSPPLPSLWDLPKA  
 GTLPTSGYGNFSGAWYQHHSSDVLASPQMM

TRTRPLEQKLISEEDLAANDILDYKDDDDKV

**Chromatograms:** [https://cdn.origene.com/chromatograms/mk6003\\_b06.zip](https://cdn.origene.com/chromatograms/mk6003_b06.zip)

**Restriction Sites:** SgfI-MluI

**Cloning Scheme:**



**ACCN:** NM\_138281

**ORF Size:** 720 bp

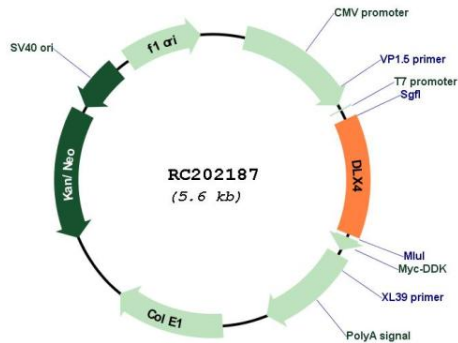
**OTI Disclaimer:** The molecular sequence of this clone aligns with the gene accession number as a point of reference only. However, individual transcript sequences of the same gene can differ through naturally occurring variations (e.g. polymorphisms), each with its own valid existence. This clone is substantially in agreement with the reference, but a complete review of all prevailing variants is recommended prior to use. [More info](#)

**OTI Annotation:** This clone was engineered to express the complete ORF with an expression tag. Expression varies depending on the nature of the gene.

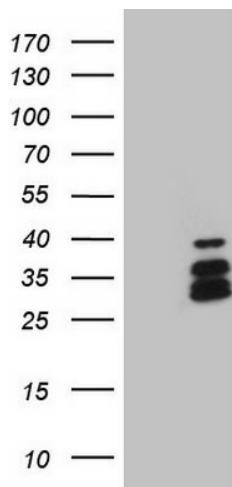
**Components:** The ORF clone is ion-exchange column purified and shipped in a 2D barcoded Matrix tube containing 10ug of transfection-ready, dried plasmid DNA (reconstitute with 100 ul of water).

<b>Reconstitution Method:</b>	<ol style="list-style-type: none"><li>1. Centrifuge at 5,000xg for 5min.</li><li>2. Carefully open the tube and add 100ul of sterile water to dissolve the DNA.</li><li>3. Close the tube and incubate for 10 minutes at room temperature.</li><li>4. Briefly vortex the tube and then do a quick spin (less than 5000xg) to concentrate the liquid at the bottom.</li><li>5. Store the suspended plasmid at -20°C. The DNA is stable for at least one year from date of shipping when stored at -20°C.</li></ol>
<b>RefSeq:</b>	<a href="#">NM_138281.3</a>
<b>RefSeq Size:</b>	2012 bp
<b>RefSeq ORF:</b>	723 bp
<b>Locus ID:</b>	1748
<b>UniProt ID:</b>	<a href="#">Q92988</a>
<b>Cytogenetics:</b>	17q21.33
<b>Domains:</b>	homeobox
<b>Protein Families:</b>	Transcription Factors
<b>MW:</b>	26.3 kDa
<b>Gene Summary:</b>	<p>Many vertebrate homeo box-containing genes have been identified on the basis of their sequence similarity with Drosophila developmental genes. Members of the Dlx gene family contain a homeobox that is related to that of Distal-less (Dll), a gene expressed in the head and limbs of the developing fruit fly. The Distal-less (Dlx) family of genes comprises at least 6 different members, DLX1-DLX6. The DLX proteins are postulated to play a role in forebrain and craniofacial development. Three transcript variants have been described for this gene, however, the full length nature of one variant has not been described. Studies of the two splice variants revealed that one encoded isoform functions as a repressor of the beta-globin gene while the other isoform lacks that function. [provided by RefSeq, Jul 2008]</p>

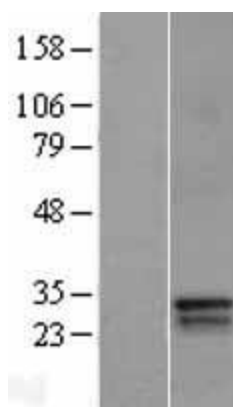
Product images:



Circular map for RC202187



HEK293T cells were transfected with the pCMV6-ENTRY control (Cat# [PS100001], Left lane) or pCMV6-ENTRY DLX4 (Cat# RC202187, Right lane) cDNA for 48 hrs and lysed. Equivalent amounts of cell lysates (5 ug per lane) were separated by SDS-PAGE and immunoblotted with anti-DLX4 (Cat# [TA808540])(1:2000). Positive lysates [LY403346] (100ug) and [LC403346] (20ug) can be purchased separately from OriGene.



Western blot validation of overexpression lysate (Cat# [LY403346]) using anti-DDK antibody (Cat# [TA50011-100]). Left: Cell lysates from untransfected HEK293T cells; Right: Cell lysates from HEK293T cells transfected with RC202187 using transfection reagent MegaTran 2.0 (Cat# [TT210002]).