

## Product datasheet for **RC202184**

### TRIM27 (NM\_006510) Human Tagged ORF Clone

#### Product data:

Product Type:	Expression Plasmids
Product Name:	TRIM27 (NM_006510) Human Tagged ORF Clone
Tag:	Myc-DDK
Symbol:	TRIM27
Synonyms:	RFP; RNF76
Mammalian Cell Selection:	Neomycin
Vector:	pCMV6-Entry (PS100001)
E. coli Selection:	Kanamycin (25 ug/mL)



[View online »](#)

**ORF Nucleotide Sequence:**

>RC202184 ORF sequence  
 Red=Cloning site Blue=ORF Green=Tags(s)

TTTTGTAATACGACTCACTATAGGGCGGCCGGGAATTCGTCGACTGGATCCGGTACCGAGGAGATCTGCC  
 GCC**GCGATCGCC**

ATGGCCTCCGGGAGTGTGGCCGAGTGCCTGCAGCAGGAGACCACCTGCCCGTGTGCCTGCAGTACTTCG  
 CAGAGCCCATGATGCTCGACTGCGGCCATAACATCTGTTGCGCGTGCCTGCGCCGCTGCTGGGGCAGCGC  
 AGAGACTAACGTGTCGTGCCCGCAGTGCCTGGGAGACCTTCCCGCAGAGGCACATGCGGCCAACCCGGCAC  
 CTGGCCAACTGACCCAAGTAAAGCAGCTGCGCACCGAGCGGCCGTCGGGGCCCGCGGCGAGATGG  
 GCGTGTGCGAGAAGCACCAGCGAGCCCTGAAGCTGTACTGCGAGGAGGACCAGATGCCCATCTGCGTGGT  
 GTGCGACCGCTCCCGGAGCACCAGCGGCCACAGCGTGTGCGCTCGAGGAGGCGGTGGAGGGCTTCAAG  
 GAGCAATCCAGAACCAGCTCGACCATTTAAAAGAGTAAAGATTTAAGAAGAGAGCTCGGGCCAGG  
 GGAACAGGCACGAGCTGAACCTTTGAGCTAACCCAGATGGAGAGGGAGAAGATTGTTTGGGAGTTTGA  
 GCAGCTGTACTCCTTAAAGGAGCATGAGTATCGCCTCTGCGCCGCTTGGAGAGCTAGACTTGGCC  
 ATCTACAATAGCATCAATGGTGCCATCACCCAGTTCTCTTGAACATCTCCACCTCAGCAGCCTGATCG  
 CTCAGCTAGAAGAGAAGCAGCAGCAGCCACCAGGGAGCTCTGCAGGACATTGGGGACACATTGAGCAG  
 GGCTGAAAGAATCAGGATTCTGAACCTTGGATCACACCTCCAGATTTGCAAGAGAAAATCCACATTTTT  
 GCCCAAAAATGTCTATTCTTACGAGAGTCTAAAGCAGTTTACAGAAAAATGCAGTCAGATATGGAGA  
 AAATCCAAGAATTAAGAGAGGCTCAGTTACTCAGTGGACGTGACTCTGGACCCAGACACGGCCTACCC  
 CAGCCTGATCCTCTGTATAATCTGCGGCAAGTGGGTACAGTTACCTCCAACAGGACCTGCCTGACAAC  
 CCCGAGAGGTTCAATCTGTTCCCTGTGCTTGGGCTCTCCATGCTTATCGCCGGGAGACATTATTGGG  
 AGGTAGAGGTGGGAGATAAAGCCAAGTGGACCATAGGTGTCTGTAAGACTCAGTGTGCAGAAAAGTGG  
 AGTAACCTCAGCCCCCAGAATGGATTCTGGGCAGTGTCTTTGTGGTATGGGAAAGAATATTGGGCTCTT  
 ACCTCCCCAATGACTGCCCTACCCTGCGGACCCGCTCCAGCGGTGGGGATTTTCTTGGACTATGATG  
 CTGGTGAAGTCTCCTTCTACAACGTGACAGAGAGGTGTACACCTTCACTTTCTCTCATGTACCTTTTG  
 TGGGCTGTCCGGCCCTACTTCACTGAGTACTCGGGAGGGAAAAGTGCAGCTCCTCTGATCATCTGC  
 CCCATGAGTGGGATAGATGGGTTTTCTGGCCATGTTGGGAATCATGGTATTCCATGGAGACCTCCCT

**ACGCGT**ACGCGGCCGCTCGAGCAGAACTCATCTCAGAAGAGGATCTGGCAGCAATGATATCTGGATT  
 ACAAGGATGACGACGATAAGGTTTAA

**Protein Sequence:**

>RC202184 protein sequence  
 Red=Cloning site Green=Tags(s)

MASGSVAECLQETTQVCLQYFAEPMMLDCGHNICCACLARCWGAETNVSCPQCRETFPQRHMRPNRH  
 LANVTQLVKQLRTERPSGPGGEMGVCEKHREPLKLYCEEDQMPICVVCDSREHRGHSVLPLEEAVEGFK  
 EQIQNQLDHLKRVKDLKRRRAQGEQARAELLSLTQMEREKIVWEFEQLYHSLKEHEYRLRLARLEELDIA  
 IYNSINGAITQFSCNISHLSSIAQLEEKQQPTRELLQDIGDLSRAERIRIPEPWITPPDLQEKIHF  
 AQKCLFLESKQFTEKMQSDMEKIQELREAQLYSVDVTLDPDTAYPSLILSDNLRQVRYSLQQDLPDN  
 PERFNLFPCVLGSPCFIAGRHYWEVEVDKAKWTIGVCEDSVCRKGGVTSAPQNGFVAVSLWYGKEYWAL  
 TSPMTALPLRTPQRVGIPLDYDAGEVSFYNVTERCHTFTFSHATFCGPVPRPYFSLSYSGGKSAAPLIIC  
 PMSGIDGFSGHVGNHGHSMETSP

**TRTRPLEQKLI**SEEDLAANDILDYKDDDDKV

**Chromatograms:**

[https://cdn.origene.com/chromatograms/mk6004\\_a08.zip](https://cdn.origene.com/chromatograms/mk6004_a08.zip)

**Restriction Sites:**

Sgfl-Mlul

**Cloning Scheme:**


**ACCN:** NM\_006510

**ORF Size:** 1539 bp

**OTI Disclaimer:** The molecular sequence of this clone aligns with the gene accession number as a point of reference only. However, individual transcript sequences of the same gene can differ through naturally occurring variations (e.g. polymorphisms), each with its own valid existence. This clone is substantially in agreement with the reference, but a complete review of all prevailing variants is recommended prior to use. [More info](#)

**OTI Annotation:** This clone was engineered to express the complete ORF with an expression tag. Expression varies depending on the nature of the gene.

**Components:** The ORF clone is ion-exchange column purified and shipped in a 2D barcoded Matrix tube containing 10ug of transfection-ready, dried plasmid DNA (reconstitute with 100 ul of water).

- Reconstitution Method:**
1. Centrifuge at 5,000xg for 5min.
  2. Carefully open the tube and add 100ul of sterile water to dissolve the DNA.
  3. Close the tube and incubate for 10 minutes at room temperature.
  4. Briefly vortex the tube and then do a quick spin (less than 5000xg) to concentrate the liquid at the bottom.
  5. Store the suspended plasmid at -20°C. The DNA is stable for at least one year from date of shipping when stored at -20°C.

**RefSeq:** [NM\\_006510.5](#)

**RefSeq Size:** 2969 bp

**RefSeq ORF:** 1542 bp

**Locus ID:** 5987

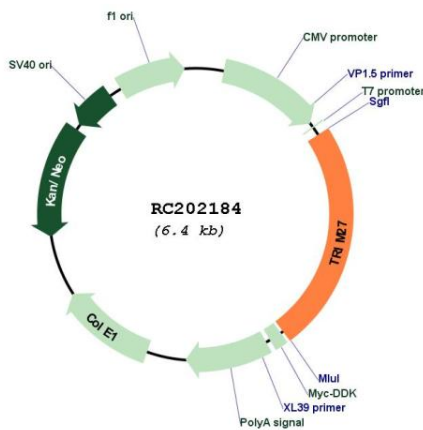
**UniProt ID:** [P14373](#)

**Cytogenetics:** 6p22.1

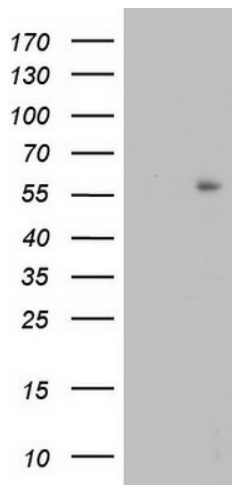
**Domains:** zf-B\_box, RING, SPRY, PRY  
**Protein Families:** Druggable Genome, Transcription Factors  
**MW:** 58.5 kDa

**Gene Summary:** This gene encodes a member of the tripartite motif (TRIM) family. The TRIM motif includes three zinc-binding domains, a RING, a B-box type 1 and a B-box type 2, and a coiled-coil region. This protein localizes to the nuclear matrix. It interacts with the enhancer of polycomb protein and represses gene transcription. It is also thought to be involved in the differentiation of male germ cells. Fusion of the N-terminus of this protein with the truncated C-terminus of the RET gene product has been shown to result in production of the ret transforming protein. [provided by RefSeq, Jul 2008]

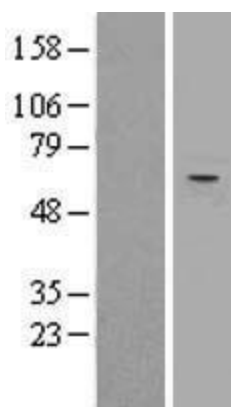
**Product images:**



Circular map for RC202184



HEK293T cells were transfected with the pCMV6-ENTRY control (Cat# [PS100001], Left lane) or pCMV6-ENTRY TRIM27 (Cat# RC202184, Right lane) cDNA for 48 hrs and lysed. Equivalent amounts of cell lysates (5 ug per lane) were separated by SDS-PAGE and immunoblotted with anti-TRIM27(Cat# [TA803910]). Positive lysates [LY401952] (100ug) and [LC401952] (20ug) can be purchased separately from OriGene.



Western blot validation of overexpression lysate (Cat# [LY401952]) using anti-DDK antibody (Cat# [TA50011-100]). Left: Cell lysates from untransfected HEK293T cells; Right: Cell lysates from HEK293T cells transfected with RC202184 using transfection reagent MegaTran 2.0 (Cat# [TT210002]).