

Product datasheet for **RC202178**

RAB39B (NM_171998) Human Tagged ORF Clone

Product data:

Product Type:	Expression Plasmids
Product Name:	RAB39B (NM_171998) Human Tagged ORF Clone
Tag:	Myc-DDK
Symbol:	RAB39B
Synonyms:	BGMR; MRX72; WSMN; WSN
Vector:	pCMV6-Entry (PS100001)
E. coli Selection:	Kanamycin (25 ug/mL)
Cell Selection:	Neomycin
ORF Nucleotide Sequence:	>RC202178 ORF sequence Red=Cloning site Blue=ORF Green=Tags(s)

TTTTGTAATACGACTCACTATAGGGCGCCGGAATTCGTCGACTGGATCCGGTACCGAGGAGATCTGCC
GCC**CGGATCGCC**

ATGGAGGCCATCTGGCTGTACCAGTTCGGCTCATTGTCATCGGGGATTCCACAGTGGGCAAGTCTGCC
TGATCCGCCGCTTCACCGAGGGTCGCTTTGCCAGTTTCTGACCCACCGTGGGGTGGATTTTTTCTC
CCGCTTGGTGGAGATCGAGCCAGGAAAACGCATCAAGCTCCAGATCTGGGATACCGGGGTCAAGAGAGG
TTCAGATCCATCACTCGCGCCTACTACAGGAACTCAGTAGGTGGTCTTCTTATTTGACATTACCAACC
GCAGGTCTTCCAGAATGTCCATGAGTGGTTAGAAGAGACCAAAGTACACGTTACGCCCTACCAAATTGT
ATTTGTTCTGGTGGGTCACAAGTGTGACCTGGATACACAGAGGCAAGTACTCGCCACGAGGCCGAGAAA
CTGGCTGCTGCATACGGCATGAAGTACATTGAAACGTCAGCCCGAGATGCCATTAATGTGGAGAAAGCCT
TCACAGACCTGACAAGAGACATATATGAGCTGGTTAAAAGGGGGGAGATTACAATCCAGGAGGGCTGGGA
AGGGGTGAAGAGTGGATTTGTACCAAATGTGGTCACTCTCAGAAGAGGTTGTCAAATCAGAGAGGAGA
TGTTTGTGC

ACGCGTACGCGGCCGCTCGAGCAGAACTCATCTCAGAAGAGGATCTGGCAGCAAATGATATCCTGGATT
ACAAGGATGACGACGATAAGGTTTAA



[View online »](#)

Protein Sequence: >RC202178 protein sequence
 Red=Cloning site Green=Tags(s)

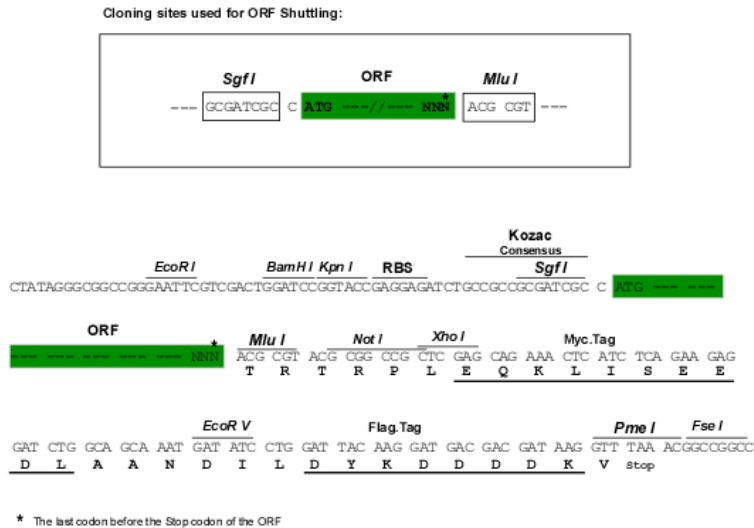
MEAIWL YQFRLIVIGDSTVGKSLIRRFTEGRFAQVSDPTVGVDFFSRLVEIEPGKRIKLQIWDTAGQER
 FRSITRAYRNSVGGLLLFIDITNRRSFQNVHEWLEETKVHVQPYQIVFVLVGHKCDLDTQRQVTRHEAEK
 LAAAYGMKYIETSARDAINVEKAFDLDL TRDIYELVKRGEITIQEGWEGVKSGFVFNVHVSSEEVKSER
 CLC

TRTRPLEQKLISEEDLAANDILDYKDDDDKV

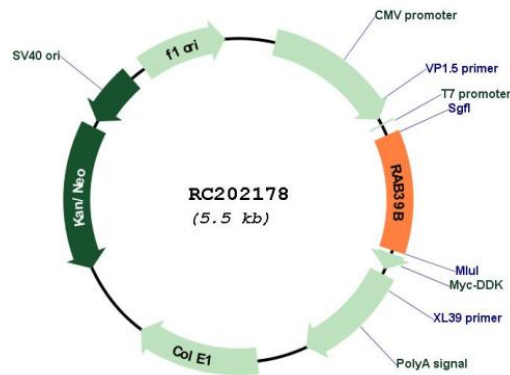
Chromatograms: https://cdn.origene.com/chromatograms/mk6308_h03.zip

Restriction Sites: SgfI-MluI

Cloning Scheme:



Plasmid Map:

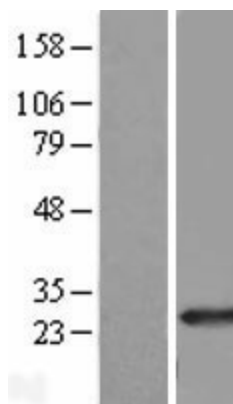


ACCN: NM_171998

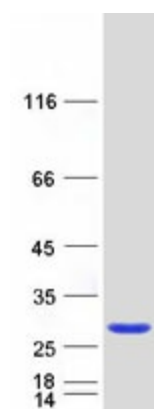
ORF Size: 639 bp

OTI Disclaimer:	The molecular sequence of this clone aligns with the gene accession number as a point of reference only. However, individual transcript sequences of the same gene can differ through naturally occurring variations (e.g. polymorphisms), each with its own valid existence. This clone is substantially in agreement with the reference, but a complete review of all prevailing variants is recommended prior to use. More info
OTI Annotation:	This clone was engineered to express the complete ORF with an expression tag. Expression varies depending on the nature of the gene.
Components:	The ORF clone is ion-exchange column purified and shipped in a 2D barcoded Matrix tube containing 10ug of transfection-ready, dried plasmid DNA (reconstitute with 100 ul of water).
Reconstitution Method:	<ol style="list-style-type: none">1. Centrifuge at 5,000xg for 5min.2. Carefully open the tube and add 100ul of sterile water to dissolve the DNA.3. Close the tube and incubate for 10 minutes at room temperature.4. Briefly vortex the tube and then do a quick spin (less than 5000xg) to concentrate the liquid at the bottom.5. Store the suspended plasmid at -20°C. The DNA is stable for at least one year from date of shipping when stored at -20°C.
RefSeq:	NM_171998.4
RefSeq Size:	3512 bp
RefSeq ORF:	642 bp
Locus ID:	116442
UniProt ID:	Q96DA2
Cytogenetics:	Xq28
Protein Families:	Druggable Genome
MW:	24.6 kDa
Gene Summary:	This gene encodes a member of the Rab family of proteins. Rab proteins are small GTPases that are involved in vesicular trafficking. Mutations in this gene are associated with X-linked cognitive disability. [provided by RefSeq, Aug 2013]

Product images:



Western blot validation of overexpression lysate (Cat# [LY406800]) using anti-DDK antibody (Cat# [TA50011-100]). Left: Cell lysates from untransfected HEK293T cells; Right: Cell lysates from HEK293T cells transfected with RC202178 using transfection reagent MegaTran 2.0 (Cat# [TT210002]).



Coomassie blue staining of purified RAB39B protein (Cat# [TP302178]). The protein was produced from HEK293T cells transfected with RAB39B cDNA clone (Cat# RC202178) using MegaTran 2.0 (Cat# [TT210002]).