

## Product datasheet for **RC202177**

### Syntaxin 8 (STX8) (NM\_004853) Human Tagged ORF Clone

#### Product data:

Product Type:	Expression Plasmids
Product Name:	Syntaxin 8 (STX8) (NM_004853) Human Tagged ORF Clone
Tag:	Myc-DDK
Symbol:	Syntaxin 8
Synonyms:	CARB
Mammalian Cell Selection:	Neomycin
Vector:	pCMV6-Entry (PS100001)
E. coli Selection:	Kanamycin (25 ug/mL)
ORF Nucleotide Sequence:	>RC202177 ORF sequence Red=Cloning site Blue=ORF Green=Tags(s)

TTTTGTAATACGACTCACTATAGGGCGCCGGGAATTCGTCGACTGGATCCGGTACCGAGGAGATCTGCC  
GCC**CGATCGCC**

ATGGCACCGGACCCCTGGTTCTCCACATACGATTCTACTTGTCAAATTGCCAAGAAATTGCTGAGAAAA  
TTCAACAACGAAATCAATATGAACGAAAAGGTGAAAAGGCACCAAAGCTTACCGTGACAATCAGAGCTTT  
GTTGCAGAACCTGAAGGAAAAGATCGCCCTTTTGAAGGACTTATTGCTAAGAGCTGTGTCAACACATCAG  
ATAACACAGCTTGAAGGGGACCGAAGACAGAACCTCTGGATGATCTTGTAACTCGAGAGAGACTACTTC  
TGGCATCCTTTAAGAATGAGGGTGCCGAACCAGATCTAATCAGGTCCAGCCTGATGAGTGAAGAGGCTAA  
GCGAGGAGCACCAACCCTTGGCTCTTTGAGGAGCCAGAGGAGACCAGAGGCTTGGGTTTTGATGAAATC  
CGGCAACAGCAGCAGAAAATTATCCAAGAACAGGATGCAGGCCTTGATGCCCTTCTCTATCATAAGTC  
GCCAAAAACAAATGGGGCAGGAAATGGGAATGAATTGGATGAACAAAATGAGATAATTGACGACCTTGC  
CAACCTAGTGGAGAACACAGATGAAAACTTCGCAATGAAACCAGGCGGGTAAACATGGTGGACAGAAAAG  
TCAGCCTCTGTGGGATGATCATGGTGATTTTACTGCTGCTTGTGGCTATCGTGTTGTTGCAGTCTGGC  
CGACCAAC

**ACGCGT**ACGCGGCCGCTCGAGCAGAAACTCATCTCAGAAGAGGATCTGGCAGCAAATGATATCCTGGATT  
ACAAGGATGACGACGATAAGGTTTAA



[View online »](#)

**Protein Sequence:** >RC202177 protein sequence  
Red=Cloning site Green=Tags(s)

MAPDPWFSTYDSTCQIAQEIAEKIQQRNQYERKGEKAPKLTVTIRALLQNLKEKIALKDLLLRVSTHQ  
 ITQLEGDRRQNLDDLVTRELLLASFKNEGAEPDLIRSSLMSEEAKRGAPNPWLFEEPEETRGLGFDEI  
 RQQQKIIQE QDAGLDALSSII SRQKQMGQEIGNELDEQNEI IDDLANL VENTDEKL RNETRRVNMVDRK  
 SASCGMIMVILLLLVAIVVVAVWPTN

TRTRPLEQKLISEEDLAANDILDYKDDDDKV

**Chromatograms:** [https://cdn.origene.com/chromatograms/mk6001\\_c05.zip](https://cdn.origene.com/chromatograms/mk6001_c05.zip)

**Restriction Sites:** SgfI-MluI

**Cloning Scheme:**



**ACCN:** NM\_004853

**ORF Size:** 708 bp

**OTI Disclaimer:** The molecular sequence of this clone aligns with the gene accession number as a point of reference only. However, individual transcript sequences of the same gene can differ through naturally occurring variations (e.g. polymorphisms), each with its own valid existence. This clone is substantially in agreement with the reference, but a complete review of all prevailing variants is recommended prior to use. [More info](#)

**OTI Annotation:** This clone was engineered to express the complete ORF with an expression tag. Expression varies depending on the nature of the gene.

**Components:** The ORF clone is ion-exchange column purified and shipped in a 2D barcoded Matrix tube containing 10ug of transfection-ready, dried plasmid DNA (reconstitute with 100 ul of water).

**Reconstitution Method:**

1. Centrifuge at 5,000xg for 5min.
2. Carefully open the tube and add 100ul of sterile water to dissolve the DNA.
3. Close the tube and incubate for 10 minutes at room temperature.
4. Briefly vortex the tube and then do a quick spin (less than 5000xg) to concentrate the liquid at the bottom.
5. Store the suspended plasmid at -20°C. The DNA is stable for at least one year from date of shipping when stored at -20°C.

**RefSeq:** [NM\\_004853.1](#), [NP\\_004844.1](#)

**RefSeq Size:** 988 bp

**RefSeq ORF:** 711 bp

**Locus ID:** 9482

**UniProt ID:** [Q9UNK0](#)

**Cytogenetics:** 17p13.1

**Domains:** t\_SNARE

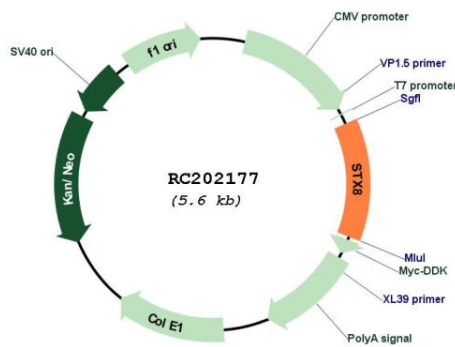
**Protein Families:** Druggable Genome, Transmembrane

**Protein Pathways:** SNARE interactions in vesicular transport

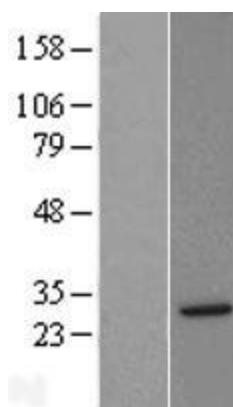
**MW:** 26.9 kDa

**Gene Summary:** The gene is a member of the syntaxin family. The encoded protein is involved in protein trafficking from early to late endosomes via vesicle fusion and exocytosis. A related pseudogene has been identified on chromosome 12. Alternative splicing results in multiple transcript variants. [provided by RefSeq, May 2010]

**Product images:**



Circular map for RC202177



Western blot validation of overexpression lysate (Cat# [LY417700]) using anti-DDK antibody (Cat# [TA50011-100]). Left: Cell lysates from untransfected HEK293T cells; Right: Cell lysates from HEK293T cells transfected with RC202177 using transfection reagent MegaTran 2.0 (Cat# [TT210002]).