

Product datasheet for RC202175

Membrin (GOSR2) (NM_004287) Human Tagged ORF Clone

Product data:

Product Type:	Expression Plasmids
Product Name:	Membrin (GOSR2) (NM_004287) Human Tagged ORF Clone
Tag:	Myc-DDK
Symbol:	Membrin
Synonyms:	Bos1; EPM6; GS27
Mammalian Cell Selection:	Neomycin
Vector:	pCMV6-Entry (PS100001)
E. coli Selection:	Kanamycin (25 ug/mL)
ORF Nucleotide Sequence:	>RC202175 ORF sequence Red=Cloning site Blue=ORF Green=Tags(s)

TTTTGTAATACGACTCACTATAGGGCGGCCGGAATTCGTCGACTGGATCCGGTACCGAGGAGATCTGCC
GCC**CGATCGCC**

ATGGATCCCTGTTCCAGCAAACGCACAAGCAGGTCCACGAGATCCAGTCTTGTCATGGGACGCCTGGAGA
CGGCAGACAAGCAGTCTGTGCACATAGTAGAAAACGAAATCCAAGCAAGCATAGACCAGATATTCAGCCG
TCTAGAACGTCTGGAGATTTTGTCCAGCAAGGAGCCCCAACAAGGCAAAATGCCAGACTTCGGGT
GACCAGTTAAAGTATGATGTCCAGCACCTGCAGACTGCGCTCAGAACTCCAGCATCGGCGCCATGCAA
GGGAGCAGCAGGAGAGACAGCGAGAAGAGCTTCTGTCTCGAACCTCACCCTAACGACTCTGACACCAC
CATACCAATGGACGAATCACTGCAGTTAACTCCTCCCTCCAGAAAGTTCACAACGGCATGGATGACCTC
ATTTTAGATGGGCACAATATTTTAGATGGACTGAGGACCCAGAGACTGACCTTGAAGGGGACTCAGAAGA
AGATCCTTGACATTGCCAACATGCTGGGCTTGTCCAACACAGTGATGCGGCTCATCGAGAAGCGGGCTTT
CCAGGACAAGTACTTTATGATAGGTGGGATGCTGCTGACCTGTGTGGTCATGTTCTCGTGGTGCAGTAC
CTGACA

ACGCGTACGCGGCCGCTCGAGCAGAACTCATCTCAGAAGAGGATCTGGCAGCAAATGATATCCTGGATT
ACAAGGATGACGACGATAAGGTTTAA



[View online »](#)

Protein Sequence: >RC202175 protein sequence
Red=Cloning site Green=Tags(s)

MDPLFQQTHKQVHEIQSCMGRLETADKQSVHIVENEIQASIDQIFSRLEILSSKEPPNKRQNRALRV
 DQLKYDVQHLQTALRNFQHRHAREQQRQREELL SRTFTTNDSDTTIPMDESLQFNSSLQKVHNGMDDL
 ILDGHNILDGLRTQRLTLKGTQKKILDIANMLGLSNTVMRLIEKRAFQDKYFMIGMMLLTCVVMFLVVQY
 LT

TRTRPLEQKLISEEDLAANDILDYKDDDDKV

Chromatograms: https://cdn.origene.com/chromatograms/mk6308_b07.zip

Restriction Sites: SgfI-MluI

Cloning Scheme:



ACCN: NM_004287

ORF Size: 636 bp

OTI Disclaimer: The molecular sequence of this clone aligns with the gene accession number as a point of reference only. However, individual transcript sequences of the same gene can differ through naturally occurring variations (e.g. polymorphisms), each with its own valid existence. This clone is substantially in agreement with the reference, but a complete review of all prevailing variants is recommended prior to use. [More info](#)

OTI Annotation: This clone was engineered to express the complete ORF with an expression tag. Expression varies depending on the nature of the gene.

Components: The ORF clone is ion-exchange column purified and shipped in a 2D barcoded Matrix tube containing 10ug of transfection-ready, dried plasmid DNA (reconstitute with 100 ul of water).

Reconstitution Method:

1. Centrifuge at 5,000xg for 5min.
2. Carefully open the tube and add 100ul of sterile water to dissolve the DNA.
3. Close the tube and incubate for 10 minutes at room temperature.
4. Briefly vortex the tube and then do a quick spin (less than 5000xg) to concentrate the liquid at the bottom.
5. Store the suspended plasmid at -20°C. The DNA is stable for at least one year from date of shipping when stored at -20°C.

RefSeq: [NM_004287.5](#)

RefSeq Size: 3319 bp

RefSeq ORF: 639 bp

Locus ID: 9570

UniProt ID: [O14653](#)

Cytogenetics: 17q21.32

Domains: V-SNARE

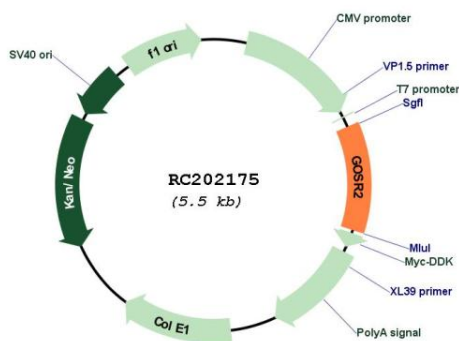
Protein Families: Druggable Genome, Transmembrane

Protein Pathways: SNARE interactions in vesicular transport

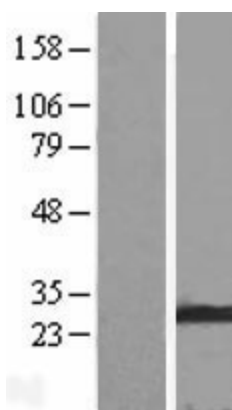
MW: 24.8 kDa

Gene Summary: This gene encodes a trafficking membrane protein which transports proteins among the medial- and trans-Golgi compartments. Due to its chromosomal location and trafficking function, this gene may be involved in familial essential hypertension. [provided by RefSeq, Mar 2016]

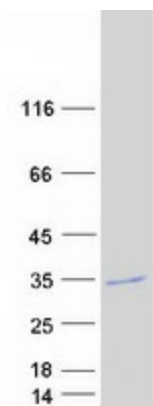
Product images:



Circular map for RC202175



Western blot validation of overexpression lysate (Cat# [LY418077]) using anti-DDK antibody (Cat# [TA50011-100]). Left: Cell lysates from untransfected HEK293T cells; Right: Cell lysates from HEK293T cells transfected with RC202175 using transfection reagent MegaTran 2.0 (Cat# [TT210002]).



Coomassie blue staining of purified GOSR2 protein (Cat# [TP302175]). The protein was produced from HEK293T cells transfected with GOSR2 cDNA clone (Cat# RC202175) using MegaTran 2.0 (Cat# [TT210002]).