

Product datasheet for RC202173

ESM1 (NM_007036) Human Tagged ORF Clone

Product data:

Product Type: Expression Plasmids
Product Name: ESM1 (NM_007036) Human Tagged ORF Clone
Tag: Myc-DDK
Symbol: ESM1
Synonyms: endocan
Mammalian Cell Selection: Neomycin
Vector: pCMV6-Entry (PS100001)
E. coli Selection: Kanamycin (25 ug/mL)
ORF Nucleotide Sequence: >RC202173 ORF sequence
Red=Cloning site Blue=ORF Green=Tags(s)

TTTTGTAATACGACTCACTATAGGGCGCCGGGAATTCGTCGACTGGATCCGGTACCGAGGAGATCTGCC
GCC**CGGATCGCC**

ATGAAGAGCGTCTTGCTGCTGACCAGCTCCTCGTGCCTGCACACCTGGTGGCCGCTGGAGCAATAATT
ATGCGGTGGACTGCCCTCAACTGTGACAGCAGTGAGTGCAAAAGCAGCCCGCTGCGAGAGGACAGT
GCTCGACGACTGTGGCTGCTGCCGAGTGTGCGCTGCAGGGCGGGGAGAACTTGTACCGCACAGTCTCA
GGCATGGATGGCATGAAGTGTGGCCGGGGCTGAGGTGTCAGCCTTCTAATGGGAGGATCCTTTTGGTG
AAGAGTTTGGTATCTGCAAAGACTGTCCCTACGGCACCTCGGGATGGATTGCAGAGAGACCTGCAACTG
CCAGTCAGGCATCTGTGACAGGGGACGGGAAAATGCCTGAAATTCCTTCCAATATTCAGTAACC
AAGTCTTCCAACAGATTTGTTTCTCTCACGGAGCATGACATGGCATCTGGAGATGGAATATTGTGAGAG
AAGAAGTTGTAAAGAGAATGCTGCCGGGTCTCCCGTAATGAGGAAATGGTTAAATCCACGC

ACGCGTACGCGGCCGCTCGAGCAGAACTCATCTCAGAAGAGGATCTGGCAGCAATGATATCCTGGATT
ACAAGGATGACGACGATAAGGTTTAA

Protein Sequence: >RC202173 protein sequence
Red=Cloning site Green=Tags(s)

MKSVLLL TLLVPAHLVAAWSNNYAVDCPQHCDSSSECKSSPRCERTVLDDCGCCRVCAAGRGETCYRTVS
GMDGMKCGPLRCQPSNGEDPFGEFFGICKDCPYGTFGMDCRETCNCQSGICDRGTGKCLKFPFFQYSVT
KSSNRFVSLTEHDMASGDGNIREEVVKENAAGSPVMRKWLNPR

TRTRPLEQKLISEEDLAANDILDYKDDDDKV

Chromatograms: https://cdn.origene.com/chromatograms/mk6011_c10.zip



Restriction Sites: SgfI-MluI

Cloning Scheme:



ACCN: NM_007036

ORF Size: 552 bp

OTI Disclaimer: The molecular sequence of this clone aligns with the gene accession number as a point of reference only. However, individual transcript sequences of the same gene can differ through naturally occurring variations (e.g. polymorphisms), each with its own valid existence. This clone is substantially in agreement with the reference, but a complete review of all prevailing variants is recommended prior to use. [More info](#)

OTI Annotation: This clone was engineered to express the complete ORF with an expression tag. Expression varies depending on the nature of the gene.

Components: The ORF clone is ion-exchange column purified and shipped in a 2D barcoded Matrix tube containing 10ug of transfection-ready, dried plasmid DNA (reconstitute with 100 ul of water).

Reconstitution Method:

1. Centrifuge at 5,000xg for 5min.
2. Carefully open the tube and add 100ul of sterile water to dissolve the DNA.
3. Close the tube and incubate for 10 minutes at room temperature.
4. Briefly vortex the tube and then do a quick spin (less than 5000xg) to concentrate the liquid at the bottom.
5. Store the suspended plasmid at -20°C. The DNA is stable for at least one year from date of shipping when stored at -20°C.

RefSeq: [NM_007036.5](#)

RefSeq Size: 2089 bp

RefSeq ORF: 555 bp

Locus ID: 11082

UniProt ID: [Q9NQ30](#)

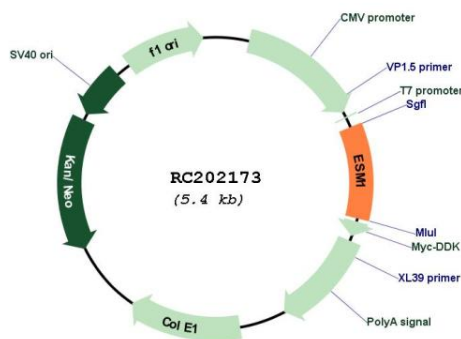
Cytogenetics: 5q11.2

Protein Families: Druggable Genome, Secreted Protein

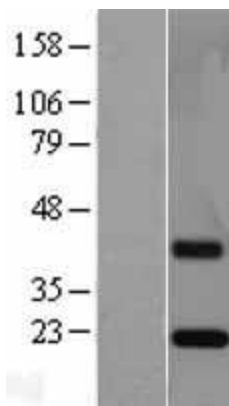
MW: 20.1 kDa

Gene Summary: This gene encodes a secreted protein which is mainly expressed in the endothelial cells in human lung and kidney tissues. The expression of this gene is regulated by cytokines, suggesting that it may play a role in endothelium-dependent pathological disorders. The transcript contains multiple polyadenylation and mRNA instability signals. Two transcript variants encoding different isoforms have been found for this gene. [provided by RefSeq, Oct 2008]

Product images:



Circular map for RC202173



Western blot validation of overexpression lysate (Cat# [LY402078]) using anti-DDK antibody (Cat# [TA50011-100]). Left: Cell lysates from untransfected HEK293T cells; Right: Cell lysates from HEK293T cells transfected with RC202173 using transfection reagent MegaTran 2.0 (Cat# [TT210002]).