

Product datasheet for **RC202167**

GCIP interacting protein p29 (SYF2) (NM_015484) Human Tagged ORF Clone

Product data:

Product Type: Expression Plasmids

Tag: Myc-DDK

Symbol: GCIP interacting protein p29

Synonyms: CBPIN; fSAP29; NTC31; P29

Mammalian Cell Selection: Neomycin

Vector: pCMV6-Entry (PS100001)

E. coli Selection: Kanamycin (25 ug/mL)

ORF Nucleotide Sequence: >RC202167 ORF sequence
 Red=Cloning site Blue=ORF Green=Tags(s)

TTTTGTAATACGACTCACTATAGGGCGGCCGGAATTCGTCGACTGGATCCGGTACCGAGGAGATCTGCC
 GCC**CGATCGCC**

ATGGCGGCTATAGCTGCATCCGAGGTGCTGGTGGACAGCGCGGAGGAGGGTCCCTCGCTGCGGCGGCGG
 AGCTGGCCGCTCAGAAGCGCGAACAGAGACTGCGCAAATTCGGGAGCTGCACCTGATGCGGAATGAAGC
 TCGTAAATTAATCACCAGGAAGTTGTGGAAGAAGATAAAAGACTAAAATTACCTGCAAATTTGGGAAGCC
 AAAAAAGCTCGTTTGGAGTGGAACTAAAGGAAGAGGAAAAAGGAATGTGCGGCAAGAGGAGAAG
 ACTATGAGAAAGTGAAGTTGCTGGAGATCAGTGCAGAAGATGCAGAAAGATGGGAGAGGAAAAAGAAGAG
 GAAAAACCTGATCTGGGATTTTCAGATTATGCTGCTGCCAGTTACGCCAGTATCATCGTTGACCAAG
 CAGATCAAACCTGACATGGAAACATATGAGAGACTGAGAGAAAAACATGGAGAAGAGTTTTTCCCAACAT
 CCAATAGTCTTCTTCATGGAACACATGTGCCTTCCACAGAGGAAATTGACAGGATGGTCATAGATCTGGA
 AAAACAGATTGAAAAACGAGACAAATATAGCCGGAGACGTCCTTATAATGATGATGCAGATATCGACTAC
 ATTAATGAAAGGAATGCCAAATTCACAAGAAAGCTGAAAGATTCTATGGGAAATACACAGCTGAAATTA
 AACAGAATTTGAAAGAGGAACAGCTGTC

ACGCGTACGCGGCCGCTCGAGCAGAACTCATCTCAGAAGAGGATCTGGCAGCAAATGATATCCTGGATT
 ACAAGGATGACGACGATAAGGTTTAA


[View online »](#)

Protein Sequence: >RC202167 protein sequence
 Red=Cloning site Green=Tags(s)

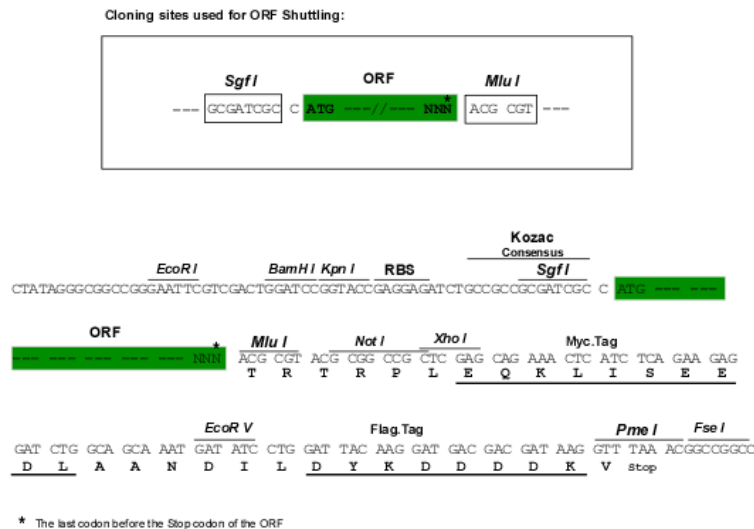
MAAIAASEVLVDSAEESLAAAAELAAQKREQLRKFKRELHLMRNEARKLNHQEVVEEDKRLKLPANWEA
 KKARLEWELKEEEKKKECAARGEDYEKVKLLEISAEDAERWERKKRKNPDLGFSYAAAQLRQYHRLTK
 QIKPDMETYERLREKHGEEFFPTSNLLHGTHVPSTEEIDRMVIDLEKQIEKRDKYSRRRPYNDDADIDY
 INERNAKFNKKAERFYGKYTAIEIKQNLERGTA

TRTRPLEQKLISEEDLAANDILDYKDDDDKV

Chromatograms: https://cdn.origene.com/chromatograms/mk6308_d09.zip

Restriction Sites: SgfI-MluI

Cloning Scheme:



ACCN: NM_015484

ORF Size: 729 bp

OTI Disclaimer: The molecular sequence of this clone aligns with the gene accession number as a point of reference only. However, individual transcript sequences of the same gene can differ through naturally occurring variations (e.g. polymorphisms), each with its own valid existence. This clone is substantially in agreement with the reference, but a complete review of all prevailing variants is recommended prior to use. [More info](#)

OTI Annotation: This clone was engineered to express the complete ORF with an expression tag. Expression varies depending on the nature of the gene.

Components: The ORF clone is ion-exchange column purified and shipped in a 2D barcoded Matrix tube containing 10ug of transfection-ready, dried plasmid DNA (reconstitute with 100 ul of water).

Reconstitution Method:

1. Centrifuge at 5,000xg for 5min.
2. Carefully open the tube and add 100ul of sterile water to dissolve the DNA.
3. Close the tube and incubate for 10 minutes at room temperature.
4. Briefly vortex the tube and then do a quick spin (less than 5000xg) to concentrate the liquid at the bottom.
5. Store the suspended plasmid at -20°C. The DNA is stable for at least one year from date of shipping when stored at -20°C.

Note: Plasmids are not sterile. For experiments where strict sterility is required, filtration with 0.22um filter is required.

RefSeq: [NM_015484.5](#)

RefSeq Size: 1777 bp

RefSeq ORF: 732 bp

Locus ID: 25949

UniProt ID: [O95926](#)

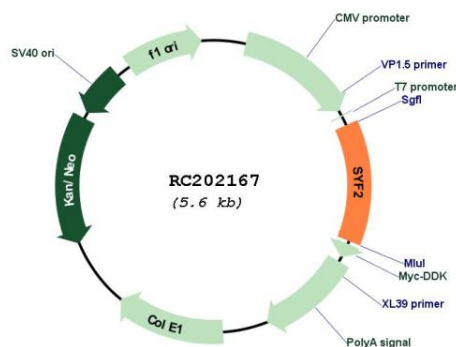
Cytogenetics: 1p36.11

Protein Pathways: Spliceosome

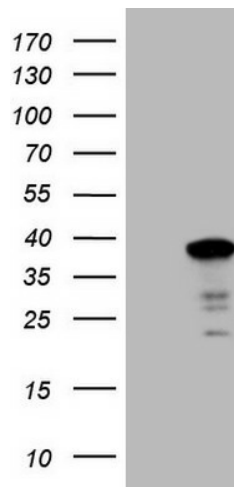
MW: 28.7 kDa

Gene Summary: This gene encodes a nuclear protein that interacts with cyclin D-type binding-protein 1, which is thought to be a cell cycle regulator at the G1/S transition. Alternate transcriptional splice variants, encoding different isoforms, have been characterized. [provided by RefSeq, Jul 2008]

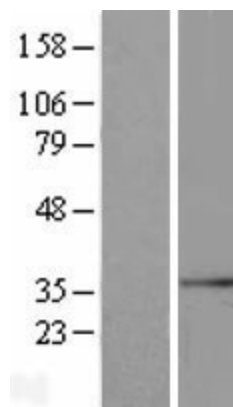
Product images:



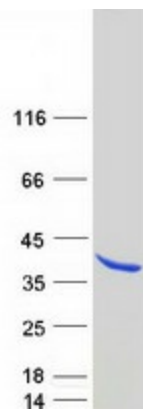
Circular map for RC202167



HEK293T cells were transfected with the pCMV6-ENTRY control (Cat# [PS100001], Left lane) or pCMV6-ENTRY SYF2 (Cat# RC202167, Right lane) cDNA for 48 hrs and lysed. Equivalent amounts of cell lysates (5 ug per lane) were separated by SDS-PAGE and immunoblotted with anti-SYF2 (Cat# [TA808453])(1:2000). Positive lysates [LY414518] (100ug) and [LC414518] (20ug) can be purchased separately from OriGene.



Western blot validation of overexpression lysate (Cat# [LY414518]) using anti-DDK antibody (Cat# [TA50011-100]). Left: Cell lysates from untransfected HEK293T cells; Right: Cell lysates from HEK293T cells transfected with RC202167 using transfection reagent MegaTran 2.0 (Cat# [TT210002]).



Coomassie blue staining of purified SYF2 protein (Cat# [TP302167]). The protein was produced from HEK293T cells transfected with SYF2 cDNA clone (Cat# RC202167) using MegaTran 2.0 (Cat# [TT210002]).