

## Product datasheet for **RC202160**

### **CORD2 (CRX) (NM\_000554) Human Tagged ORF Clone**

#### Product data:

Product Type:	Expression Plasmids
Product Name:	CORD2 (CRX) (NM_000554) Human Tagged ORF Clone
Tag:	Myc-DDK
Symbol:	CORD2
Synonyms:	CORD2; CRD; LCA7; OTX3
Mammalian Cell Selection:	Neomycin
Vector:	pCMV6-Entry (PS100001)
E. coli Selection:	Kanamycin (25 ug/mL)
ORF Nucleotide Sequence:	>RC202160 ORF sequence Red=Cloning site Blue=ORF Green=Tags(s)

TTTTGTAATACGACTCACTATAGGGCGGCCGGAATTCGTCGACTGGATCCGGTACCGAGGAGATCTGCC  
GCC**CGATCGCC**

ATGATGGCGTATATGAACCCGGGGCCCCACTATTCTGTCAACGCCTTGGCCCTAAGTGGCCCCAGTGTGG  
ATCTGATGCACCAGGCTGTGCCCTACCCAAGCGCCCCAGGAAGCAGCGGGGAGCGCACACCTTCAC  
CCGGAGCCAACCTGGAGGAGCTGGAGGCACTGTTTGCCAAGACCCAGTACCCAGACGTCTATGCCCGTGAG  
GAGGTGGCTCTGAAGATCAATCTGCCTGAGTCCAGGGTTCAGGTTTGGTTCAAGAACCGGAGGGCTAAAT  
GCAGGCAGCAGCGACAGCAGCAGAAACAGCAGCAGCAGCCCCAGGGGGCCAGGCCAAGGCCCGGCCTGC  
CAAGAGGAAGGGCGGCAGTCCCAAGACCCTCCACAGATGTGTGTCCAGACCCTCTGGGCATCTCAGAT  
TCCTACAGTCCCCCTCTGCCCGGCCCTCAGGCTCCCCAACCCAGGCAGTGGCCACTGTGTCCATCTGGA  
GCCCAGCCTCAGAGTCCCCTTTGCCTGAGGCGCAGCGGGCTGGGCTGGTGGCCTCAGGGCCGTCTCTGAC  
CTCCGCCCCCTATGCCATGACCTACGCCCGGCCCTCCGCTTTCTGCTCTTCCCCCTCCGCATGGGTCT  
CCGAGCTCCTATTTAGCGGCCTAGACCCTACCTTTCTCCATGGTGGCCAGCTAGGGGGCCCCGGCTC  
TTAGCCCCCTCTCTGGCCCCTCCGTGGGACCTTCCTGGCCAGTCCCCACCTCCCTATCAGGCCAGAG  
CTATGGCGCCTACAGCCCCGTGGATAGCTTGAATTCAAGGACCCACGGGCACCTGGAATTCACCTAC  
AATCCCATGGACCCTCTGGACTACAAGGATCAGAGTGCCTGGAAGTTTCAGATCTTG

**ACGCGT**ACGCGGGCCGCTCGAGCAGAAACTCATCTCAGAAGAGGATCTGGCAGCAAATGATATCCTGGATT  
ACAAGGATGACGACGATAAGGTTTAA



[View online »](#)

**Protein Sequence:** >RC202160 protein sequence  
Red=Cloning site Green=Tags(s)

MMAYMNP GPHYSVNALALSGPSVDLMHQAVPYPSAPRKQRRERTTFTRSQLEELEALFAKTQYPDYARE  
 EVALKINLPESRVQVWFKNRRRAKCRQQRQQKQQQPPGGQAKARPAKRKAGTSPRPSTDVCPDPLGISD  
 SYSPPLPGPSGSPPTTAVATVSIWSPASESPLPEAQRAGLVASGPSLTSAPYAMTYAPASAFCSPPSAYGS  
 PSSYFSGLDPYLSPMVPQLGGPALSPLSGPSVGP SLAQSP TSLSGQSYGAYSPVDSLEFKDPTGTWKFTY  
 NPMDPLDYKQSAWK FQIL

TRTRPLEQKLISEEDLAANDILDYKDDDDKV

**Chromatograms:** [https://cdn.origene.com/chromatograms/mk6092\\_a03.zip](https://cdn.origene.com/chromatograms/mk6092_a03.zip)

**Restriction Sites:** SgfI-MluI

**Cloning Scheme:**



**ACCN:** NM\_000554

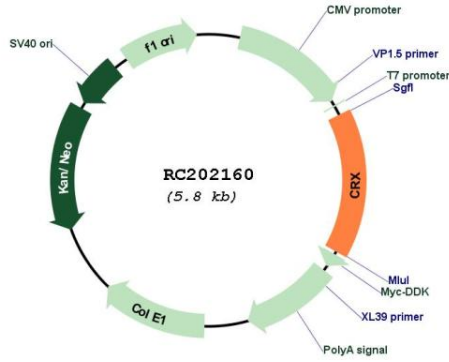
**ORF Size:** 897 bp

**OTI Disclaimer:** Due to the inherent nature of this plasmid, standard methods to replicate additional amounts of DNA in E. coli are highly likely to result in mutations and/or rearrangements. Therefore, OriGene does not guarantee the capability to replicate this plasmid DNA. Additional amounts of DNA can be purchased from OriGene with batch-specific, full-sequence verification at a reduced cost. Please contact our customer care team at [custsupport@origene.com](mailto:custsupport@origene.com) or by calling 301.340.3188 option 3 for pricing and delivery.

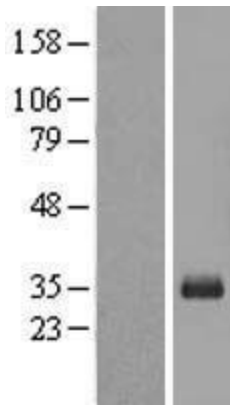
The molecular sequence of this clone aligns with the gene accession number as a point of reference only. However, individual transcript sequences of the same gene can differ through naturally occurring variations (e.g. polymorphisms), each with its own valid existence. This clone is substantially in agreement with the reference, but a complete review of all prevailing variants is recommended prior to use. [More info](#)

<b>OTI Annotation:</b>	This clone was engineered to express the complete ORF with an expression tag. Expression varies depending on the nature of the gene.
<b>Components:</b>	The ORF clone is ion-exchange column purified and shipped in a 2D barcoded Matrix tube containing 10ug of transfection-ready, dried plasmid DNA (reconstitute with 100 ul of water).
<b>Reconstitution Method:</b>	<ol style="list-style-type: none"><li>1. Centrifuge at 5,000xg for 5min.</li><li>2. Carefully open the tube and add 100ul of sterile water to dissolve the DNA.</li><li>3. Close the tube and incubate for 10 minutes at room temperature.</li><li>4. Briefly vortex the tube and then do a quick spin (less than 5000xg) to concentrate the liquid at the bottom.</li><li>5. Store the suspended plasmid at -20°C. The DNA is stable for at least one year from date of shipping when stored at -20°C.</li></ol>
<b>Note:</b>	Plasmids are not sterile. For experiments where strict sterility is required, filtration with 0.22um filter is required.
<b>RefSeq:</b>	<a href="#">NM_000554.6</a>
<b>RefSeq Size:</b>	4482 bp
<b>RefSeq ORF:</b>	900 bp
<b>Locus ID:</b>	1406
<b>UniProt ID:</b>	<a href="#">O43186</a>
<b>Cytogenetics:</b>	19q13.33
<b>Protein Families:</b>	Druggable Genome, Transcription Factors
<b>MW:</b>	32.3 kDa
<b>Gene Summary:</b>	The protein encoded by this gene is a photoreceptor-specific transcription factor which plays a role in the differentiation of photoreceptor cells. This homeodomain protein is necessary for the maintenance of normal cone and rod function. Mutations in this gene are associated with photoreceptor degeneration, Leber congenital amaurosis type III and the autosomal dominant cone-rod dystrophy 2. Several alternatively spliced transcript variants of this gene have been described, but the full-length nature of some variants has not been determined. [provided by RefSeq, Jul 2008]

Product images:



Circular map for RC202160



Western blot validation of overexpression lysate (Cat# [LY424645]) using anti-DDK antibody (Cat# [TA50011-100]). Left: Cell lysates from untransfected HEK293T cells; Right: Cell lysates from HEK293T cells transfected with RC202160 using transfection reagent MegaTran 2.0 (Cat# [TT210002]).