

## Product datasheet for **RC202159**

### REEP6 (NM\_138393) Human Tagged ORF Clone

#### Product data:

**Product Type:** Expression Plasmids  
**Product Name:** REEP6 (NM\_138393) Human Tagged ORF Clone  
**Tag:** Myc-DDK  
**Symbol:** REEP6  
**Synonyms:** C19orf32; DP1L1; REEP6.1; REEP6.2; RP77; TB2L1; Yip2f  
**Mammalian Cell Selection:** Neomycin  
**Vector:** pCMV6-Entry (PS100001)  
**E. coli Selection:** Kanamycin (25 ug/mL)  
**ORF Nucleotide Sequence:** >RC202159 ORF sequence  
Red=Cloning site Blue=ORF Green=Tags(s)

TTTTGTAATACGACTCACTATAGGGCGCCGGGAATTCGTCGACTGGATCCGGTACCGAGGAGATCTGCC  
GCC**CGATCGCC**

ATGGACGGCCTGAGGCAGCGCTGGAGCACTTCTGGAGCAAAGGAACCTGGTCACCGAAGTGTGGGGG  
CGCTGGAGGCAAGACCGGGGTGGAGAAGCGGTATCTGGCTGCAGGAGCCGTCACCTGTAAAGCCTGTA  
TCTGCTGTTCCGGCTACGGAGCGTCTCTGCTGTGCAATCTCATCGGATTTGTGTACCCCGCATATGCCTCA  
ATCAAAGCTATCGAGAGCCAAGCAAGGACGACACTGTGTGGCTCACCTACTGGGTGGTGTACGCC  
TGTTTGGGCTGGCCGAGTTCTTCAGCGATCTACTCCTGTCTGGTCCCTTTCTACTACGTGGGCAAGTG  
CGCCTTCTGTTGTTCTGCATGGCTCCCAGGCCCTGGAACGGGGCTCTCATGCTGTATCAGCGCGTCGTG  
CGTCCGCTGTTCTAAGGCACCACGGGGCCGTAGACAGAATCATGAACGACCTCAGCGGGCGAGCCCTGG  
ACGCGGGCCGGGAATAACCAGGAACGTCAAGCCAAGCCAGACCCCGAGCCGAAGGACAAG

**ACGCGT**ACGCGGGCCGCTCGAGCAGAACTCATCTCAGAAGAGGATCTGGCAGCAAATGATATCCTGGATT  
ACAAGGATGACGACGATAAGGTTTAA

**Protein Sequence:** >RC202159 protein sequence  
Red=Cloning site Green=Tags(s)

MDGLRQRVEHFLEQRNLVTEVLGALEAKTGVEKRYLAAGAVTLLSLYLLFGYGASLLCNLIGFVYPAYAS  
IKAIIESPSKDDDTVWLTYWVYALFGLAEFFSDLLL SWFPFYVYGKCAFLLFCMAPRPWNGALMLYQRRV  
RPLFLRHHGAVDRIMNDLSGRALDAAAGITRNVKPSQTPQPKDK

**TRTRPLEQKLI**SEEDLAANDILDYKDDDDKV

**Chromatograms:** [https://cdn.origene.com/chromatograms/mk6302\\_b08.zip](https://cdn.origene.com/chromatograms/mk6302_b08.zip)



[View online »](#)

Restriction Sites: SgfI-MluI

Cloning Scheme:



ACCN: NM\_138393

ORF Size: 552 bp

OTI Disclaimer: The molecular sequence of this clone aligns with the gene accession number as a point of reference only. However, individual transcript sequences of the same gene can differ through naturally occurring variations (e.g. polymorphisms), each with its own valid existence. This clone is substantially in agreement with the reference, but a complete review of all prevailing variants is recommended prior to use. [More info](#)

OTI Annotation: This clone was engineered to express the complete ORF with an expression tag. Expression varies depending on the nature of the gene.

Components: The ORF clone is ion-exchange column purified and shipped in a 2D barcoded Matrix tube containing 10ug of transfection-ready, dried plasmid DNA (reconstitute with 100 ul of water).

Reconstitution Method:

1. Centrifuge at 5,000xg for 5min.
2. Carefully open the tube and add 100ul of sterile water to dissolve the DNA.
3. Close the tube and incubate for 10 minutes at room temperature.
4. Briefly vortex the tube and then do a quick spin (less than 5000xg) to concentrate the liquid at the bottom.
5. Store the suspended plasmid at -20°C. The DNA is stable for at least one year from date of shipping when stored at -20°C.

Note: Plasmids are not sterile. For experiments where strict sterility is required, filtration with 0.22um filter is required.

RefSeq: [NM\\_138393.4](#)

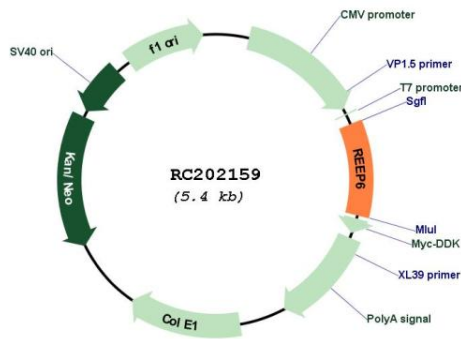
RefSeq Size: 1393 bp

RefSeq ORF: 555 bp

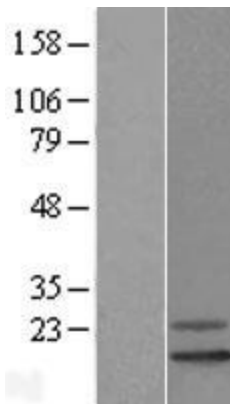
**Locus ID:** 92840  
**UniProt ID:** [Q96HR9](#)  
**Cytogenetics:** 19p13.3  
**Protein Families:** Druggable Genome, Transmembrane  
**MW:** 20.7 kDa

**Gene Summary:** The protein encoded by this gene may be involved in the transport of receptors from the endoplasmic reticulum (ER) to the cell surface. The encoded protein may also play a role in regulating ER membrane structure. This gene is required for the proper development of retinal rods and photoreceptors, with defects in this gene being associated with retinitis pigmentosa 77. [provided by RefSeq, May 2017]

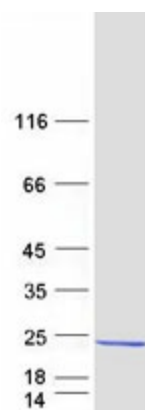
### Product images:



Circular map for RC202159



Western blot validation of overexpression lysate (Cat# [LY408657]) using anti-DDK antibody (Cat# [TA50011-100]). Left: Cell lysates from untransfected HEK293T cells; Right: Cell lysates from HEK293T cells transfected with RC202159 using transfection reagent MegaTran 2.0 (Cat# [TT210002]).



Coomassie blue staining of purified REEP6 protein (Cat# [TP302159]). The protein was produced from HEK293T cells transfected with REEP6 cDNA clone (Cat# RC202159) using MegaTran 2.0 (Cat# [TT210002]).