

## Product datasheet for RC202155

### TIS11B (ZFP36L1) (NM\_004926) Human Tagged ORF Clone

#### Product data:

Product Type:	Expression Plasmids
Product Name:	TIS11B (ZFP36L1) (NM_004926) Human Tagged ORF Clone
Tag:	Myc-DDK
Symbol:	TIS11B
Synonyms:	Berg36; BRF1; cMG1; ERF-1; ERF1; RNF162B; TIS11B
Mammalian Cell Selection:	Neomycin
Vector:	pCMV6-Entry (PS100001)
E. coli Selection:	Kanamycin (25 ug/mL)
ORF Nucleotide Sequence:	>RC202155 ORF sequence Red=Cloning site Blue=ORF Green=Tags(s)

TTTTGTAATACGACTCACTATAGGGCGCCGGGAATTCGTCGACTGGATCCGGTACCGAGGAGATCTGCC  
GCC**CGATCGCC**

ATGACCACCACCCTCGTGTCTGCCACCATCTTCGACTTGAGCGAAGTTTTATGCAAGGGTAACAAGATGC  
TCAACTATAGTGCTCCAGTGCAGGGGGTTGCCTGCTGGACAGAAAGGCAGTGGGCACCCCTGCTGGTGG  
GGGCTTCCCTCGGAGGCACTCAGTCACCCTGCCAGCTCCAAGTCCACCAGAACCAGCTCCTCAGCAGC  
CTCAAGGGTGAGCCAGCCCCGCTCTGAGCTCGCGAGACAGCCGCTTCCGAGACCGCTCCTTCTCGGAAG  
GGGGCAGCGGCTGCTGCCACCCAGAAGCAGCCCGGGGGCGCCAGGTCAACTCCAGCCGCTACAAGAC  
GGAGCTGTGCCGCCCTTTGAGGAAAACGGTGCCTGTAAGTACGGGGACAAGTGCCAGTTCCGACACGGC  
ATCCACGAGCTCCGACGCTGACCCGCCACCCCAAGTACAAGACGGAGCTGTGCCGACCTTCCACACCA  
TCGGCTTTTGCCCTACGGGCCCGCTGCCACTTCATCCACAACGCTGAAGAGCGCCGCTGCCCTGGCCGG  
GGCCCGGGACCTCTCCGCTGACCGTCCCGCCTCCAGCATAGCTTTAGCTTTGCTGGGTTTCCCAGTGCC  
GCTGCCACCGCGCTGCCACCGGCTGCTGGACAGCCCCACGTCCATCACCCACCCCTATTCTGAGCG  
CCGATGACCTCCTGGGCTCACCTACCCTGCCGATGGCACCAATAACCTTTTGCCTTCTCCAGCCAGGA  
GCTGGCAAAGCCTTTTGGCCCTAGCATGGGGCTGCCCGGGGTGGCTCCCGACCACTTCTCTCCG  
CCATGTCGAGTCCCCTACATGTTTGACTCTCCCCCAGCCCTCAGGATTCTCTCTCGGACCAGGAGG  
GCTACCTGAGCAGCTCCAGCAGCAGCCACAGTGGCTCAGACTCCCCGACCTTGGACAACCTCAAGACGCC  
GCCATCTTCAGCAGACTTTCATCTCAGATGAC

**ACGCGT**ACGCGGCCGCTCGAGCAGAAACTCATCTCAGAAGAGGATCTGGCAGCAAATGATATCCTGGATT  
ACAAGGATGACGACGATAAGGTTTAA



[View online »](#)

**Protein Sequence:** >RC202155 protein sequence  
Red=Cloning site Green=Tags(s)

```
MTTTLVSATIFDLSEVLCKGNKMLNYSAPSAGGCLLDRKAVGTPAGGGFPRRHVTL PSSKFHQNQLLSS
LKGE PAPALSSRDSRFRDRSFSEGERLLPTQKQPGGGQVNSSRYKTELCRPFEEENGACKYGDCKQFAHG
IHEL RSLTRHPKYKTELCRTFHTIGFCPYGPRCHF IHNAEERRALAGARDLSADRPRLQHSF SFAGFPSA
AATAAATGLLDSPTSITPPPI LSADDLLGSPTLPDGTNNPFAFSSQELASLFAPSMGLPGGGSPPTFLFR
PMSESPHMFDSPPSPQDSLSDQEGYLS SSSSSSHSGSDSPTLDNSRRLPIFSRLSISDD
```

TRTRPLEQKLISEEDLAANDILDYKDDDDKV

**Chromatograms:** [https://cdn.origene.com/chromatograms/mk6304\\_h01.zip](https://cdn.origene.com/chromatograms/mk6304_h01.zip)

**Restriction Sites:** SgfI-MluI

**Cloning Scheme:**



**ACCN:** NM\_004926

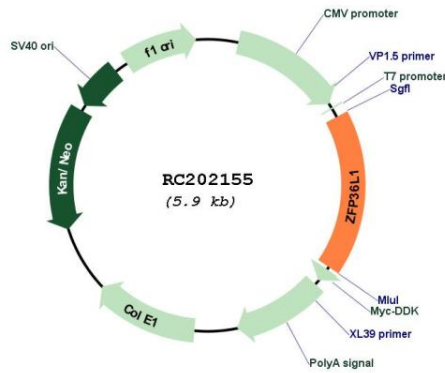
**ORF Size:** 1014 bp

**OTI Disclaimer:** Due to the inherent nature of this plasmid, standard methods to replicate additional amounts of DNA in E. coli are highly likely to result in mutations and/or rearrangements. Therefore, OriGene does not guarantee the capability to replicate this plasmid DNA. Additional amounts of DNA can be purchased from OriGene with batch-specific, full-sequence verification at a reduced cost. Please contact our customer care team at [custsupport@origene.com](mailto:custsupport@origene.com) or by calling 301.340.3188 option 3 for pricing and delivery.

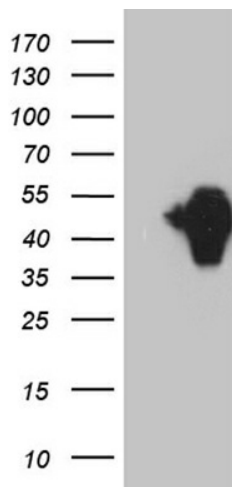
The molecular sequence of this clone aligns with the gene accession number as a point of reference only. However, individual transcript sequences of the same gene can differ through naturally occurring variations (e.g. polymorphisms), each with its own valid existence. This clone is substantially in agreement with the reference, but a complete review of all prevailing variants is recommended prior to use. [More info](#)

<b>OTI Annotation:</b>	This clone was engineered to express the complete ORF with an expression tag. Expression varies depending on the nature of the gene.
<b>Components:</b>	The ORF clone is ion-exchange column purified and shipped in a 2D barcoded Matrix tube containing 10ug of transfection-ready, dried plasmid DNA (reconstitute with 100 ul of water).
<b>Reconstitution Method:</b>	<ol style="list-style-type: none"><li>1. Centrifuge at 5,000xg for 5min.</li><li>2. Carefully open the tube and add 100ul of sterile water to dissolve the DNA.</li><li>3. Close the tube and incubate for 10 minutes at room temperature.</li><li>4. Briefly vortex the tube and then do a quick spin (less than 5000xg) to concentrate the liquid at the bottom.</li><li>5. Store the suspended plasmid at -20°C. The DNA is stable for at least one year from date of shipping when stored at -20°C.</li></ol>
<b>Note:</b>	Plasmids are not sterile. For experiments where strict sterility is required, filtration with 0.22um filter is required.
<b>RefSeq:</b>	<a href="#">NM_004926.4</a>
<b>RefSeq Size:</b>	3887 bp
<b>RefSeq ORF:</b>	1017 bp
<b>Locus ID:</b>	677
<b>UniProt ID:</b>	<a href="#">Q07352</a>
<b>Cytogenetics:</b>	14q24.1
<b>Domains:</b>	zf-CCCH, Tis11B_C
<b>Protein Families:</b>	Transcription Factors
<b>MW:</b>	36.3 kDa
<b>Gene Summary:</b>	This gene is a member of the TIS11 family of early response genes, which are induced by various agonists such as the phorbol ester TPA and the polypeptide mitogen EGF. This gene is well conserved across species and has a promoter that contains motifs seen in other early-response genes. The encoded protein contains a distinguishing putative zinc finger domain with a repeating cys-his motif. This putative nuclear transcription factor most likely functions in regulating the response to growth factors. Alternatively spliced transcript variants encoding different isoforms have been found for this gene. [provided by RefSeq, Sep 2011]

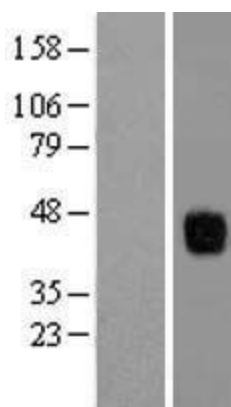
Product images:



Circular map for RC202155



HEK293T cells were transfected with the pCMV6-ENTRY control (Cat# [PS100001], Left lane) or pCMV6-ENTRY ZFP36L1 (Cat# RC202155, Right lane) cDNA for 48 hrs and lysed. Equivalent amounts of cell lysates (5 ug per lane) were separated by SDS-PAGE and immunoblotted with anti-ZFP36L1 (Cat# [TA810860])(1:2000). Positive lysates [LY417621] (100ug) and [LC417621] (20ug) can be purchased separately from OriGene.



Western blot validation of overexpression lysate (Cat# [LY417621]) using anti-DDK antibody (Cat# [TA50011-100]). Left: Cell lysates from untransfected HEK293T cells; Right: Cell lysates from HEK293T cells transfected with RC202155 using transfection reagent MegaTran 2.0 (Cat# [TT210002]).