

Product datasheet for RC202153

FKBPL (NM_022110) Human Tagged ORF Clone

Product data:

Product Type:	Expression Plasmids
Product Name:	FKBPL (NM_022110) Human Tagged ORF Clone
Tag:	Myc-DDK
Symbol:	FKBPL
Synonyms:	DIR1; NG7; WISP39
Mammalian Cell Selection:	Neomycin
Vector:	pCMV6-Entry (PS100001)
E. coli Selection:	Kanamycin (25 ug/mL)
ORF Nucleotide Sequence:	>RC202153 ORF sequence Red=Cloning site Blue=ORF Green=Tags(s)

TTTTGTAATACGACTCACTATAGGGCGCCGGGAATTCGTCGACTGGATCCGGTACCGAGGAGATCTGCC
GCC**CGATCGC**C

ATGGAGACGCCACCAGTCAATACAATTGGAGAAAAGGACACCTCTCAGCCGCAACAAGAGTGGGAAAAGA
ACCTTCGGGAGAACCTTGATTCACTTATTAGATTAGGCAGCAGCCCGAGACCTCCTACCGAAACGCT
TGAGCTGGAAGTAAGCCAGATCCAGCCAGCCAAATTCTAGAGCATACTCAAGGAGCTGAAAACTGGTT
GCTGAACCTGAAGGAGACTCTATAAGTCTCATGGATCAACCAGTCAGATGCCAGAGGCCCTTCAAGCTT
CTGATCTCTGGTACTGCCCGATGGGAGCTTTGTCAAGAAGATCGTAATCCGTGGCCATGGCTTGGACAA
ACCCAAACTAGGCTCCTGCTGCCGGTACTGGCTTTGGGGTTTCCTTTCGGATCAGGGCCCGCAGAGGGC
TGGACAGAGCTAACTATGGGCGTAGGGCCATGGAGGGAGGAACTTGGGGGGAGCTCATAGAGAAATGCT
TGGAGTCCATGTGTCAAGGTGAGGAAGCAGAGCTTCACTGCCTGGGCACTCTGGACCTCCTGTCAAGCT
CACACTGGCATCCTTCACTCAAGGCCGAGACTCCTGGGAGCTGGAGACTAGCGAGAAGGAAGCCCTGGCC
AGGGAAGAACGTGCAAGGGGCACAGAATTTTCGAGCTGGGAACCCTGAAGGAGCTGCCGATGCATG
GACGGGCTCTTCGGCTGCTCCTGACTTTACCCCACTGGCCCTCCAGAACAAGTGTCTTTCATGCCAA
TCTGGCTGCCTGTCAGTTGTTGCTAGGGCAGCCTCAGTTGGCAGCCAGAGCTGTGACCGGGTGTGGAG
CGGGAGCCTGGCATTAAAGGCCTTATACCGAAGGGGGTTGCCAGGCTGCCCTGGGAACCTGGAAA
AAGCAACTGCTGACCTCAAGAAGGTGCTGGCGATAGATCCAAAAACCGGCAGCCAGGAGGAAGTGGG
GAAGGTGGTCATTAGGGGAAGAACCAGGATGCAGGGCTGGCTCAGGGTCTGCGCAAGATGTTTGGC

ACGCGTACGCGGCCGCTCGAGCAGAAACTCATCTCAGAAGAGGATCTGGCAGCAATGATATCCTGGATT
ACAAGGATGACGACGATAAGGTTTAA



[View online »](#)

Protein Sequence: >RC202153 protein sequence
Red=Cloning site Green=Tags(s)

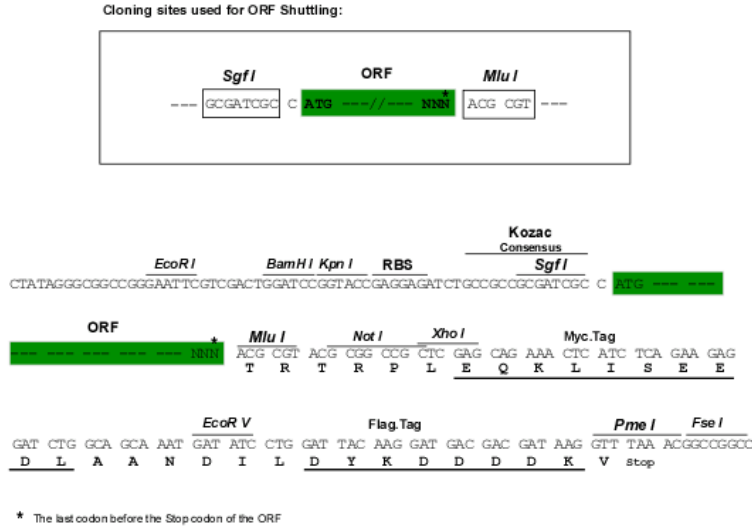
METPPVNTIGEKDTSQPQQEWKLNRENLDVSIQIRQQPRDPPTETLELEVSPDPASQILEHTQGAEKLVAELEGDSHKSHGSTSQMPEALQASDLWYCPDGSFVKKIVIRGHGLDKPKLGSCCRVLALGFPPGSGPPEGWTELTMGVGPWREETWGELIEKCLESMCQGEAEQLPGHSGPPVRLTLASFQTQRDSWELETSEKEALAREERARGTELFRAGNPEGAARCYGRALRLLLTLPPPPTVLANLAACQLLLGQPQLAAQSCDRVLE
 REPGHLKALYRRGVAQAALGNLEKATADLKVLAIDPKNRAAQEELGKVVIQGKNQDAGLAQGLRKMFG

TRTRPLEQKLISEEDLAANDILDYKDDDDKV

Chromatograms: https://cdn.origene.com/chromatograms/mk6305_f05.zip

Restriction Sites: SgfI-MluI

Cloning Scheme:



ACCN: NM_022110

ORF Size: 1047 bp

OTI Disclaimer: The molecular sequence of this clone aligns with the gene accession number as a point of reference only. However, individual transcript sequences of the same gene can differ through naturally occurring variations (e.g. polymorphisms), each with its own valid existence. This clone is substantially in agreement with the reference, but a complete review of all prevailing variants is recommended prior to use. [More info](#)

OTI Annotation: This clone was engineered to express the complete ORF with an expression tag. Expression varies depending on the nature of the gene.

Components: The ORF clone is ion-exchange column purified and shipped in a 2D barcoded Matrix tube containing 10ug of transfection-ready, dried plasmid DNA (reconstitute with 100 ul of water).

Reconstitution Method:

1. Centrifuge at 5,000xg for 5min.
2. Carefully open the tube and add 100ul of sterile water to dissolve the DNA.
3. Close the tube and incubate for 10 minutes at room temperature.
4. Briefly vortex the tube and then do a quick spin (less than 5000xg) to concentrate the liquid at the bottom.
5. Store the suspended plasmid at -20°C. The DNA is stable for at least one year from date of shipping when stored at -20°C.

Note: Plasmids are not sterile. For experiments where strict sterility is required, filtration with 0.22um filter is required.

RefSeq: [NM_022110.4](#)

RefSeq Size: 1357 bp

RefSeq ORF: 1050 bp

Locus ID: 63943

UniProt ID: [Q9UIM3](#)

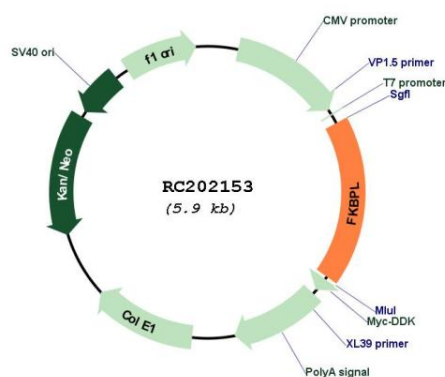
Cytogenetics: 6p21.32

Domains: TPR

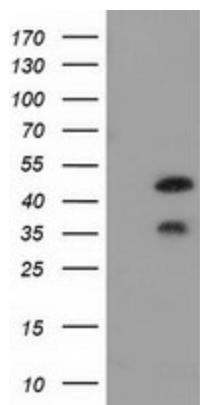
MW: 38.2 kDa

Gene Summary: The protein encoded by this gene has similarity to the immunophilin protein family, which play a role in immunoregulation and basic cellular processes involving protein folding and trafficking. The encoded protein is thought to have a potential role in the induced radioresistance. Also it appears to have some involvement in the control of the cell cycle. [provided by RefSeq, Jul 2008]

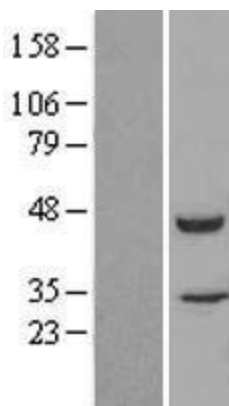
Product images:



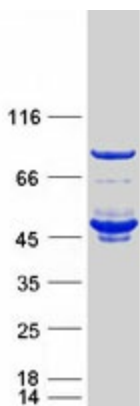
Circular map for RC202153



HEK293T cells were transfected with the pCMV6-ENTRY control (Cat# [PS100001], Left lane) or pCMV6-ENTRY FKBPL (Cat# RC202153, Right lane) cDNA for 48 hrs and lysed. Equivalent amounts of cell lysates (5 ug per lane) were separated by SDS-PAGE and immunoblotted with anti-FKBPL (Cat# [TA502165]). Positive lysates [LY411782] (100ug) and [LC411782] (20ug) can be purchased separately from OriGene.



Western blot validation of overexpression lysate (Cat# [LY411782]) using anti-DDK antibody (Cat# [TA50011-100]). Left: Cell lysates from untransfected HEK293T cells; Right: Cell lysates from HEK293T cells transfected with RC202153 using transfection reagent MegaTran 2.0 (Cat# [TT210002]).



Coomassie blue staining of purified FKBPL protein (Cat# [TP302153]). The protein was produced from HEK293T cells transfected with FKBPL cDNA clone (Cat# RC202153) using MegaTran 2.0 (Cat# [TT210002]).