

## Product datasheet for **RC202150**

### **PCTAIRE3 (CDK18) (NM\_002596) Human Tagged ORF Clone**

#### **Product data:**

Product Type:	Expression Plasmids
Product Name:	PCTAIRE3 (CDK18) (NM_002596) Human Tagged ORF Clone
Tag:	Myc-DDK
Symbol:	PCTAIRE3
Synonyms:	PCTAIRE; PCTAIRE3; PCTK3
Mammalian Cell Selection:	Neomycin
Vector:	pCMV6-Entry (PS100001)
E. coli Selection:	Kanamycin (25 ug/mL)



[View online »](#)

**ORF Nucleotide Sequence:**

>RC202150 ORF sequence  
 Red=Cloning site Blue=ORF Green=Tags(s)

TTTTGTAATACGACTCACTATAGGGCGGCCGGGAATTCGTCGACTGGATCCGGTACCGAGGAGATCTGCC  
 GCC**GCGATCGCC**

ATGAACAAGATGAAGAACTTTAAGCGCCGTTTCTCCCTGTCAGTGCCCCGCACTGAGACCATTGAAGAAT  
 CCTTGGCTGAATTCACGGAGCAATTC AACAGCTCCACAACCGCGGAATGAGAAGTTGAGCTCGGTCC  
 TCTTGGCAGAGACCCCCGAGGAGTGCAGCACCTTCTCCCAACAGACAGCGGGGAGGACCGGGGCGAG  
 CTCTCCCTGGCGTGCAGTTCCAGCGGGCAGAACAGCGCCGCTTCTCCATGGAGGACGTGAGCAAGA  
 GGCTCTCTGCCCATGGATATCCGCTGCCAGGAATCTACAGAAGCTACAGATGGAGAGCCAGA  
 TCTGCCAAGCCGCTCAGCCGATGTCCCGCGGGCTCCCTGTCAGACATTGGCTTTGGGAACTGGAA  
 ACATACGTGAACTGGACAACTGGGAGAGGGCACCTATGCCACAGTCTCAAAGGGCGCAGAACTGA  
 TGGAGAACCTTGTGGCCCTGAAAGAGATCCGGCTGGAGCAGGAGGAGCGCCCTGACTGCCATCCG  
 AGAGGTGTCTGCTGAAGAACCTGAAGCACGCCAATATTGTGACCTGCATGACCTCATCCACACAGAT  
 CGGTCCCTCACCTGGTGTGAGTACCTGGACAGTGACCTGAAGCAGTATCTGGACCACTGTGGGAACC  
 TCATGAGCATGCACAACGTCAAGATTTTCATGTTCCAGCTGCTCCGGGGCTCGCCTACTGTCACCAACCG  
 CAAGATCTGCACCGGGACCTGAAGCCCCAGAACCTGCTCATCAACGAGAGGGGGGAGCTGAAGCTGGCC  
 GACTTTGGACTGGCCAGGGCCAAGTCACTGCCACAAAGACTTACTCCAATGAGGTGGTACCCCTGTGGT  
 ACAGGCCCCCGATGTGCTGCTGGGATCCACAGAGTACTCCACCCCAATTGATATGTGGGGCGTGGGCTG  
 CATCCACTACGAGATGGCCACAGGGAGGCCCTTCCCGGGCTCCACAGTCAAGGAGGAGCTGCACCTC  
 ATCTTTCGCTCCTCGGGACCCACAGAAGAGACGTGGCCGGCGTACCGCCTTCTCTGAGTTCCGCA  
 CCTACAGCTTCCCTGCTACCTCCCGCAGCCGCTCATCAACCACGCGCCAGGTTGGATACGGATGGCAT  
 CCACCTCTGAGCAGCTGCTCCTGTATGAATCCAAGAGTCGCATGTGAGCAGAGGCTGCCCTGAGTCAC  
 TCTACTTCCGGTCTCTGGGAGAGCGTGTGACCAAGCTTGAAGACTGCCTCCATCTTCTCCCTGAAGG  
 AGATCCAGCTCCAGAAGGACCCAGGCTACCGAGGCTTGGCCTTCCAGCAGCCAGGACGAGGGAAGAACAG  
 GCGGCAGAGCATCTTC

**ACGCGT**ACGCGGGCGCTCGAGCAGAACTCATCTCAGAAGAGGATCTGGCAGCAAATGATATCTGGATT  
 ACAAGGATGACGACGATAAGGTTTAA

**Protein Sequence:**

>RC202150 protein sequence  
 Red=Cloning site Green=Tags(s)

MNKMKNFKRRFSLVPRTEETIEESLAEFTEQFNQLHNRNENLQLGPLGRDPPQECSTFSPTDSGEEPGQ  
 LSPGVQFQRRQNRFSMEDVSKRSLPMDIRLPQEFLLQKLMESPDLPKPLSRMSRRASLSDIGFGKLE  
 TYVKLDKLGEGTYATVFKGRSKLMENLVALKEIRLEHEEGAPCTAIREVSLKLNKLANIVTLHDLIHTD  
 RSLTLVFEYLDSDLKQYLDHCGNLSMHNKIFMFQLLRGLAYCHHRKILHRDLKPQNLLINERGELKLA  
 DFLARAKSVPTKYSNEVVTLWYRPPDVLLGSTEYSTPIDMWGVGCIHYEMATGRPLFPGSTVKEELHL  
 IFRLLGTPTEETWPGVTAFSEFRTYSFPCYLPQPLINHAPRLDTDGIHLLSSLLYESKSRMSAEALSH  
 SYFRSLGERVHQLDITASIFSLKEIQLQKDPGYRGLAFQQPGRGKNRRQSIF

**TR**TRPLEQKLISEEDLAANDILDYKDDDDKV

**Chromatograms:**

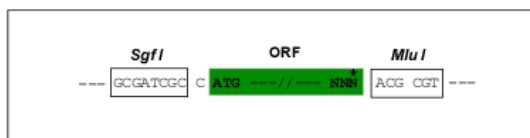
[https://cdn.origene.com/chromatograms/mk6540\\_b12.zip](https://cdn.origene.com/chromatograms/mk6540_b12.zip)

**Restriction Sites:**

Sgfl-MluI

Cloning Scheme:

Cloning sites used for ORF Shutting:



\* The last codon before the Stop codon of the ORF

ACCN: NM\_002596

ORF Size: 1416 bp

OTI Disclaimer: The molecular sequence of this clone aligns with the gene accession number as a point of reference only. However, individual transcript sequences of the same gene can differ through naturally occurring variations (e.g. polymorphisms), each with its own valid existence. This clone is substantially in agreement with the reference, but a complete review of all prevailing variants is recommended prior to use. [More info](#)

OTI Annotation: This clone was engineered to express the complete ORF with an expression tag. Expression varies depending on the nature of the gene.

Components: The ORF clone is ion-exchange column purified and shipped in a 2D barcoded Matrix tube containing 10ug of transfection-ready, dried plasmid DNA (reconstitute with 100 ul of water).

Reconstitution Method:

1. Centrifuge at 5,000xg for 5min.
2. Carefully open the tube and add 100ul of sterile water to dissolve the DNA.
3. Close the tube and incubate for 10 minutes at room temperature.
4. Briefly vortex the tube and then do a quick spin (less than 5000xg) to concentrate the liquid at the bottom.
5. Store the suspended plasmid at -20°C. The DNA is stable for at least one year from date of shipping when stored at -20°C.

RefSeq: [NM\\_002596.4](#)

RefSeq Size: 3204 bp

RefSeq ORF: 1425 bp

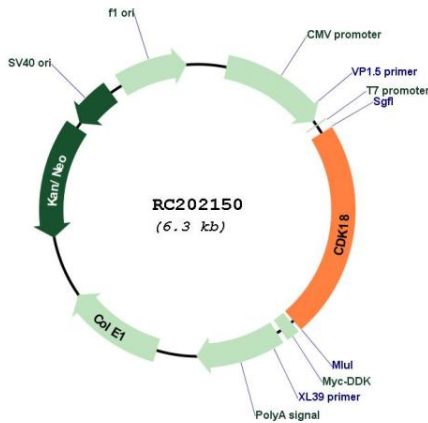
Locus ID: 5129

UniProt ID: [Q07002](#)

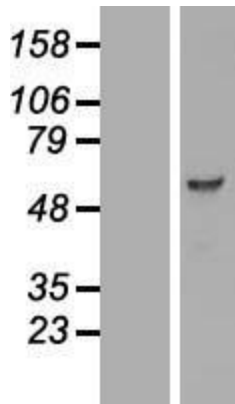
Cytogenetics: 1q32.1

**Protein Families:** Druggable Genome, Protein Kinase  
**MW:** 54.2 kDa  
**Gene Summary:** May play a role in signal transduction cascades in terminally differentiated cells. [UniProtKB/Swiss-Prot Function]

**Product images:**



Circular map for RC202150



Western blot validation of overexpression lysate (Cat# [LY403954]) using anti-DDK antibody (Cat# [TA50011-100]). Left: Cell lysates from untransfected HEK293T cells; Right: Cell lysates from HEK293T cells transfected with [RC213327] using transfection reagent MegaTran 2.0 (Cat# [TT210002]).