

## Product datasheet for RC202148

### ACTR3B (NM\_020445) Human Tagged ORF Clone

#### Product data:

Product Type:	Expression Plasmids
Product Name:	ACTR3B (NM_020445) Human Tagged ORF Clone
Tag:	Myc-DDK
Symbol:	ACTR3B
Synonyms:	ARP3BETA; ARP11
Mammalian Cell Selection:	Neomycin
Vector:	pCMV6-Entry (PS100001)
E. coli Selection:	Kanamycin (25 ug/mL)
ORF Nucleotide Sequence:	>RC202148 ORF sequence Red=Cloning site Blue=ORF Green=Tags(s)

TTTTGTAATACGACTCACTATAGGGCGGCCGGAATTCGTCGACTGGATCCGGTACCGAGGAGATCTGCC  
GCC**CGATCGCC**

ATGGCAGGCTCCCTGCCTCCCTGCGTGGTGGACTGTGGCACCGGGTATACCAAGCTTGGCTACGCAGGCA  
ACACTGAGCCCCAGTTCATTATTCCTTCATGTATTGCCATCAGAGAGTCAGCAAAGGTAGTTGACCAAGC  
TCAAAGGAGAGTGTGAGGGGAGTTGATGACCTTGACTTTTTTCATAGGAGATGAAGCCATCGATAAACCT  
ACATATGTACAAAGTGCCGATACGACATGGAATCATTGAAGACTGGGATCTTATGAAAGGTTTCATGG  
AGCAAGTGGTTTTAAATATCTTCGAGCTGAACCTGAGGACCATTATTTTTTAATGACAGAACCTCCACT  
CAATACACCAGAAAACAGAGAGTATCTTCAGAAATTATGTTGAATCATTTAACGTACCAGGACTCTAC  
ATTGCAGTTCAGGCAGTCTGGCCTTGGCGCATCTTGGACATCTCGACAAGTGGTGAACGTACGTTAA  
CGGGGATAGTCATTGACAGCGGAGATGGAGTCACCCATGTTATCCAGTGGCAGAAGGTTATGTAATTGG  
AAGCTGCATCAAACACATCCCGATTGCAGGTAGAGATAATTACGTATTTCAACAGCTGCTAAGGGAG  
AGGGAGGTGGGAATCCCTCCTGAGCAGTCACTGGAGACCGCAAAGCCATTAAGGAGAAACTGTTTACA  
TTTGCCCCGATATAGTCAAGGAATTTGCCAAGTATGATGTGGATCCCCGGAAGTGGATCAAACAGTACAC  
GGGTATCAATGCGATCAACCAGAAGAAGTTTGTATAGACGTTGGTTACGAAAGATTCTGGGACCTGAA  
ATATTTTCCACCCGGAGTTTGCCAACCCAGACTTTATGGAGTCCATCTCAGATGTTGTTGATGAAGTAA  
TACAGAACTGCCCATCGATGTGCGGCCCGCTGTATAAGAATGTCGTACTCTCAGGAGGCTCCACCAT  
GTTCAGGGATTTTCGACGCCGACTGCAGAGGGATTTGAAGAGAGTGGTGGATGCTAGGCTGAGGCTCAGC  
GAGGAGCTCAGCGCGGGAGGATCAAGCCGAAGCCTGTGGAGGTCCAGGTGGTCACGCATCACATGCAGC  
GCTACGCCGTGTGGTTCGGAGGCTCCAATGCTGGCCTCGACTCCCGAGTCTTTTCAGGTCTGCCACACCAA  
GAAGGACTATGAAGAGTACGGGCCAGCATCTGCCCCACAACCCCGTCTTTGGAGTCATGTCC

**ACGCGT**ACGCGGCCGCTCGAGCAGAACTCATCTCAGAAGAGGATCTGGCAGCAAATGATATCTGGATT  
ACAAGGATGACGACGATAAGGTTTAA



[View online >](#)

**Protein Sequence:** >RC202148 protein sequence  
Red=Cloning site Green=Tags(s)

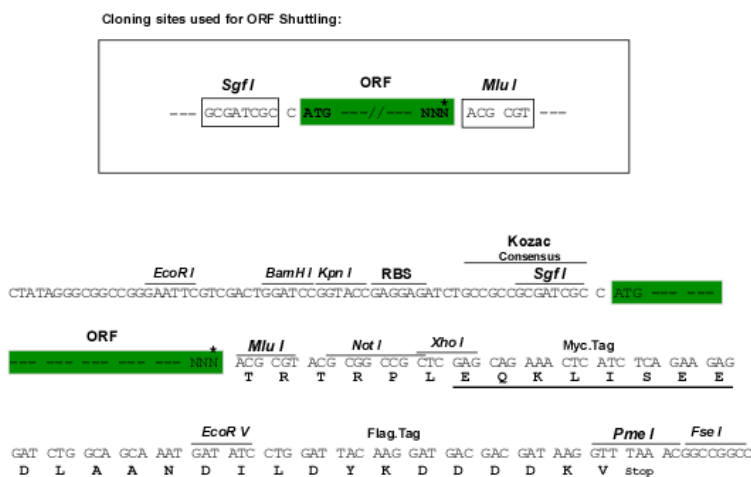
MAGSLPPCVVDCGTGYTKLGYAGNTEPQFIIPSCIAIRESAKVVDQAQRRVLRGVDDLDFFIGDEAIDKP  
 TYATKWPIRHGI IEDWDLMERFMEQVVKYLRAEPEDHYFLMTEPPLNTPENREYLAEIMFESFNVPGLY  
 IAVQAVLALAASWTSRQVGERTLTGIVIDSGDGVTHVIPVAEGYVIGSCIKHIPIAGRDIYFIQQLRE  
 REVGIPEQSLETAKAIKEKYCYICPDIKVEFAKYDVPDKWIKQYTGINAINQKFFVIDVGYERFLGPE  
 IFHFPEFANPDFMESISDVVDEVIQNCPI DVRRPLYKKNVLSGGSTMFRDFGRRLQRDLKRVDARLRLS  
 EELSGGR IKPKPVEVQVVTHMQRYAVWFGGSM LASTPEFFQVCHTKKDYEEYGPSICRHNPFVFGVMS

TRTRPLEQKLISEEDLAANDILDYKDDDDKV

**Chromatograms:** [https://cdn.origene.com/chromatograms/mk6302\\_e06.zip](https://cdn.origene.com/chromatograms/mk6302_e06.zip)

**Restriction Sites:** SgfI-MluI

**Cloning Scheme:**



\* The last codon before the Stop codon of the ORF

**ACCN:** NM\_020445

**ORF Size:** 1254 bp

**OTI Disclaimer:** The molecular sequence of this clone aligns with the gene accession number as a point of reference only. However, individual transcript sequences of the same gene can differ through naturally occurring variations (e.g. polymorphisms), each with its own valid existence. This clone is substantially in agreement with the reference, but a complete review of all prevailing variants is recommended prior to use. [More info](#)

**OTI Annotation:** This clone was engineered to express the complete ORF with an expression tag. Expression varies depending on the nature of the gene.

**Components:** The ORF clone is ion-exchange column purified and shipped in a 2D barcoded Matrix tube containing 10ug of transfection-ready, dried plasmid DNA (reconstitute with 100 ul of water).

**Reconstitution Method:**

1. Centrifuge at 5,000xg for 5min.
2. Carefully open the tube and add 100ul of sterile water to dissolve the DNA.
3. Close the tube and incubate for 10 minutes at room temperature.
4. Briefly vortex the tube and then do a quick spin (less than 5000xg) to concentrate the liquid at the bottom.
5. Store the suspended plasmid at -20°C. The DNA is stable for at least one year from date of shipping when stored at -20°C.

**Note:** Plasmids are not sterile. For experiments where strict sterility is required, filtration with 0.22um filter is required.

**RefSeq:** [NM\\_020445.6](#)

**RefSeq Size:** 2223 bp

**RefSeq ORF:** 1257 bp

**Locus ID:** 57180

**UniProt ID:** [Q9P1U1](#)

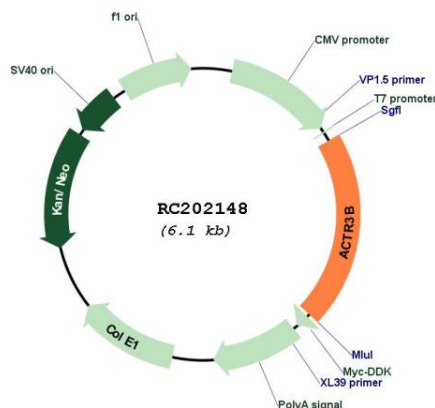
**Cytogenetics:** 7q36.1-q36.2

**Domains:** ACTIN

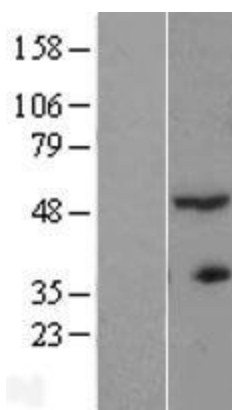
**MW:** 47.6 kDa

**Gene Summary:** This gene encodes a member of the actin-related proteins (ARP), which form multiprotein complexes and share 35-55% amino acid identity with conventional actin. The protein encoded by this gene may have a regulatory role in the actin cytoskeleton and induce cell-shape change and motility. Pseudogenes of this gene are located on chromosomes 2, 4, 10, 16, 22 and Y. Alternative splicing results in multiple transcript variants and protein isoforms. [provided by RefSeq, Jul 2012]

### Product images:



Circular map for RC202148



Western blot validation of overexpression lysate (Cat# [LY412453]) using anti-DDK antibody (Cat# [TA50011-100]). Left: Cell lysates from untransfected HEK293T cells; Right: Cell lysates from HEK293T cells transfected with RC202148 using transfection reagent MegaTran 2.0 (Cat# [TT210002]).



Coomassie blue staining of purified ACTR3B protein (Cat# [TP302148]). The protein was produced from HEK293T cells transfected with ACTR3B cDNA clone (Cat# RC202148) using MegaTran 2.0 (Cat# [TT210002]).