

Product datasheet for **RC202142**

TAF1B (NM_005680) Human Tagged ORF Clone

Product data:

Product Type:	Expression Plasmids
Product Name:	TAF1B (NM_005680) Human Tagged ORF Clone
Tag:	Myc-DDK
Symbol:	TAF1B
Synonyms:	MGC:9349; RAF1B; RAFI63; SL1; TAFI63
Mammalian Cell Selection:	Neomycin
Vector:	pCMV6-Entry (PS100001)
E. coli Selection:	Kanamycin (25 ug/mL)



[View online »](#)

ORF Nucleotide Sequence:

>RC202142 ORF sequence
 Red=Cloning site Blue=ORF Green=Tags(s)

TTTTGTAATACGACTCACTATAGGGCGGCCGGGAATTCGTCGACTGGATCCGGTACCGAGGAGATCTGCC
 GCC**CGGATCGCC**

ATGGACCTCGAGGAGTCGGAAGAGTTTAAAGAACGCTGTACTCAGTGTGCTGCTGTCTCATGGGGTCTTA
 CTGATGAAGGCAATATTATTGCACTTCTTGCCACAATGTTACAGAGAGATATCAGGAAGTTACAACAC
 TGATCTTATTCCTAATACCCAAATAAAAGCCCTCAACCGGGGCTTAAAAAAAAAAAAAATACTGAAAA
 GGCTGGGATTGGTATGTGTGTGAAGTTTCCAGTATATTCTTTATCAACAAGCAGAAGCCTTAAAGAACC
 TTGGAGTAGGCCAGAGTTAAAGAACGATGTTTTACATAATTTTTGGAAGCGCTACCTTCAGAAGAGCAA
 GCAGGCATATTGTAAGAACCAGTTTATACCACTGGAAGGAAACCTACGGTATTAGAAGATAATCTAAGT
 CATTACAGACTGGCTAGTGAGCCTGAGCTGCTAAGTGATGTCAGCTGTCTCTCTTTCTTGAAAGTGGAG
 CGGAGTCTCAGTCTGACATCCACTCGAAAACCTTTCCCGTCAGCAAAGCATACAATCAGAAAACGTC
 TGTCTGCTCTGGATCTCTGGATGGAGTTGAATACTCACAACGAAAGGAGAAGGAATCGTGAAGATGACC
 ATGCCACAGACACTTGCCTTCTGTTATCTGCTCTACTTTGGCAGAGAGAAGCAATAACACTTTCAGATC
 TTTTGAGGTTTGTGAAGAGGACCATATTCCTTACATAAATGCTTTTCAGCATTTTCAGAACAGATGAA
 ATTATATGGACGTGACAGAGGAATCTTTGGTATAGAGTCTTGGCCTGACTACGAGGACATCTATAAAAA
 ACAATAGAAGTTGGAACATTTTTAGATTTGCCTCGTTTTCCAGACATAACTGAAGACTGCTATCTTCATC
 CCAACATACTGTGATGAAATACTTGATGGAAGTCAACCTCCCTGATGAAATGCATAGCTTAACTTGCCA
 CGTGGTAAAAATGACTGGAATGGGAGAAGTGGATTTTCTGACATTTGATCCTATAGCCAAAATGGCAAAA
 GCTGTTAAGTACGATGTACAAGCTGTAGCTATCATTGTGGTGGTATTGAAACTGCTCTTTCTATTGGATG
 ACAGTTTCGAGTGGTCTTTGTCTAATCTTGCTGAAAAGCATAATGAAAAGAACAAAAAAGATAAGCCATG
 GTTTGATTTAGAAAAGTGGTACCAAATTAAGAAGAAAGCTTTTGATGAGAAAAAACAAAAATGGGAAGAA
 GCAAGGGCCAAGTACCTGTGAAAAGTGAAGGCACTCTACTACTATTTGTCGACAAACCAGTAGCAT
 ATAAAAAAGAGAAATGGTGGTGAATCTACAGAAACAATTTAGCACACTGGTCGATTCAACAGCAACTGC
 TGGAAAAAAGCCCTTCAAGTTTTAGTTCAACTGGACTGAAGAGGACTGATAGAAGTGTTCAT
 GGACACAGCCTTCAGGGAGTCTGAAAGAGAAAGGCCAATCACTGCTGACTAAGAATTCATTATATTGGC
 TTAGTACACAGAAATTCGAGATGCTATTGTACACATGTGACAACTATGAAGAATCAAATTTCTCT
 GAGTTATCAGTTTATACTAAATCTTTCTCTCTCTGCTCAGAATAAAGACTTCCCTTCTCCATGAAGAA
 GTGAGCTTAGTTGAGAAGAACTTTTTGAGAAAAAATACAGTGTAAAAAGAAAGAAATCAAGATCCAAGA
 AAGTGAGACGACAT

ACGCGTACGCGGCCGCTCGAGCAGAAACTCATCTCAGAAGAGGATCTGGCAGCAAATGATATCCTGGATT
 ACAAGGATGACGACGATAAGGTTTAA

Protein Sequence:

>RC202142 protein sequence
 Red=Cloning site Green=Tags(s)

MDLEESEEFKERCTQCAAVSWGLTDEGKYYCTSCHNVTERYQEVNTNDLIPNTQIKALNRGLKKNKNTK
 GWDWYVCEGFQYILYQQAELKNLGVGPELKNVLFHFWKRYLQKSKQAYCKNPVYTTGRKPTVLEDNLS
 HSDWASEPELLSDVSCPPFLESGAESQSDIHRKPPFVSKASQSETSVCSGLDGEYSQRKEKGIKMT
 MPQTLAFCYLSLLWQREAITLSDLLRFVEEDHIPYINAFQHFPEQMKLYGRDRGIFGIESWPDYEDIYK
 TIEVGTFLDLPRFPDITEDCYLHPNILCMKYLMEVNLPEMHSLTCHVVKMTGMGEVDLTFDPIAKMAK
 AVKYDVQAVAIIVVVLKLLFLLDDSFWSLSNLAEKHNEKNKDKPWFDFRKYQIMKKAFFDEKQKWE
 ARAKYLWKSEKPLYYSFVDPVAYKREMVVNLQKQFSTLVDSTATAGKSPSSFQFNWTEEDTDRTCFH
 GHSLQGVLLKEKGQSLTKNSLYWLSQKFCRCYCTHVTTYEESNYLSYQFILNLFSLRLIKTSLLHEE
 VSLVEKKLFEKKYSVKRKRKRSKRVRRH

TRTRPLEQKLISEEDLAANDILDYKDDDDKV

Chromatograms:

https://cdn.origene.com/chromatograms/mk6305_g06.zip

Restriction Sites: SgfI-MluI

Cloning Scheme:



ACCN: NM_005680

ORF Size: 1764 bp

OTI Disclaimer: The molecular sequence of this clone aligns with the gene accession number as a point of reference only. However, individual transcript sequences of the same gene can differ through naturally occurring variations (e.g. polymorphisms), each with its own valid existence. This clone is substantially in agreement with the reference, but a complete review of all prevailing variants is recommended prior to use. [More info](#)

OTI Annotation: This clone was engineered to express the complete ORF with an expression tag. Expression varies depending on the nature of the gene.

Components: The ORF clone is ion-exchange column purified and shipped in a 2D barcoded Matrix tube containing 10ug of transfection-ready, dried plasmid DNA (reconstitute with 100 ul of water).

- Reconstitution Method:**
1. Centrifuge at 5,000xg for 5min.
 2. Carefully open the tube and add 100ul of sterile water to dissolve the DNA.
 3. Close the tube and incubate for 10 minutes at room temperature.
 4. Briefly vortex the tube and then do a quick spin (less than 5000xg) to concentrate the liquid at the bottom.
 5. Store the suspended plasmid at -20°C. The DNA is stable for at least one year from date of shipping when stored at -20°C.

Note: Plasmids are not sterile. For experiments where strict sterility is required, filtration with 0.22um filter is required.

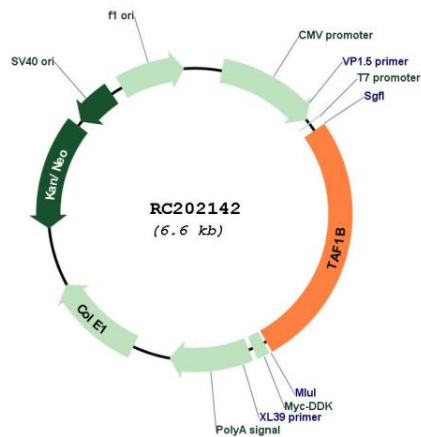
RefSeq: [NM_005680.3](#)

RefSeq Size: 2306 bp

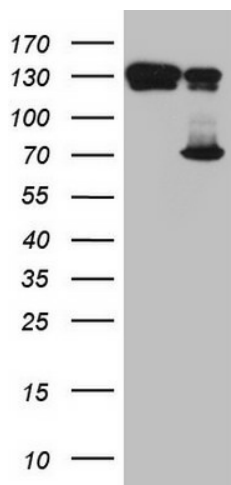
RefSeq ORF: 1767 bp

Locus ID: 9014
UniProt ID: [Q53T94](#)
Cytogenetics: 2p25.1
Protein Families: Transcription Factors
MW: 68.8 kDa
Gene Summary: Initiation of transcription by RNA polymerase I requires the formation of a complex composed of the TATA-binding protein (TBP) and three TBP-associated factors (TAFs) specific for RNA polymerase I. This complex, known as SL1, binds to the core promoter of ribosomal RNA genes to position the polymerase properly and acts as a channel for regulatory signals. This gene encodes one of the SL1-specific TAFs. Multiple transcript variants encoding different isoforms have been found for this gene. [provided by RefSeq, Jan 2016]

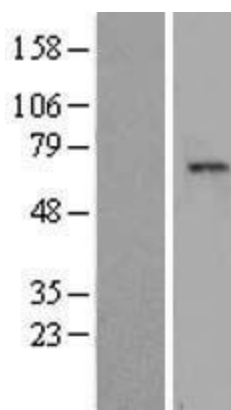
Product images:



Circular map for RC202142



HEK293T cells were transfected with the pCMV6-ENTRY control (Cat# [PS100001], Left lane) or pCMV6-ENTRY TAF1B (Cat# RC202142, Right lane) cDNA for 48 hrs and lysed. Equivalent amounts of cell lysates (5 ug per lane) were separated by SDS-PAGE and immunoblotted with anti-TAF1B (Cat# [TA808689])(1:2000). Positive lysates [LY417139] (100ug) and [LC417139] (20ug) can be purchased separately from OriGene.



Western blot validation of overexpression lysate (Cat# [LY417139]) using anti-DDK antibody (Cat# [TA50011-100]). Left: Cell lysates from untransfected HEK293T cells; Right: Cell lysates from HEK293T cells transfected with RC202142 using transfection reagent MegaTran 2.0 (Cat# [TT210002]).