

## Product datasheet for RC202141

### ARF1 (NM\_001658) Human Tagged ORF Clone

#### Product data:

Product Type:	Expression Plasmids
Product Name:	ARF1 (NM_001658) Human Tagged ORF Clone
Tag:	Myc-DDK
Symbol:	ARF1
Synonyms:	PVNH8
Mammalian Cell Selection:	Neomycin
Vector:	pCMV6-Entry (PS100001)
E. coli Selection:	Kanamycin (25 ug/mL)
ORF Nucleotide Sequence:	>RC202141 ORF sequence Red=Cloning site Blue=ORF Green=Tags(s)

TTTGTAAATACGACTCACTATAGGGCGGCCGGAATTCGTCGACTGGATCCGGTACCGAGGAGATCTGCC  
 GCCCGCATCGCC

ATGGGGAACATCTTCGCCAACCTCTTCAAGGGCCTTTTGGCAAAAAGAAATGCGCATCCTCATGGTGG  
 GCCTGGATGCTGCAGGGAAGACCACGATCCTCTACAAGCTTAAGCTGGGTGAGATCGTGACCACCATTC  
 CACCATAGGCTTCAACGTGGAACCGTGGAGTACAAGAATCAGCTTCACTGTGTGGGACGTGGGTGGC  
 CAGGACAAGATCCGGCCCTGTGGCGCCACTACTCCAGAACACACAAGGCCTGATCTTCGTGGTGGACA  
 GCAATGACAGAGAGCGTGTGAACGAGGCCGTGAGGAGCTCATGAGGATGCTGGCCGAGGACGAGCTCCG  
 GGATGCTGTCTCCTGTTGTCGCAACAAGCAGGACCTCCCAACGCCATGAATGCGGCCGAGATCACA  
 GACAAGCTGGGGCTGCACTCACTACGCCACAGGAAGTGGTACATTCAGGCCACCTGCGCCACCAGCGGCG  
 ACGGGCTCTATGAAGGACTGGACTGGCTGTCCAATCAGCTCCGGAACCAGAAG

ACGCGTACGCGGCCGCTCGAGCAGAACTCATCTCAGAAGAGGATCTGGCAGCAAATGATATCCTGGATT  
 ACAAGGATGACGACGATAAGGTTTAA

Protein Sequence:	>RC202141 protein sequence Red=Cloning site Green=Tags(s)
-------------------	--

MGNIFANLFGKLFKKEMRILMVGLDAAGKTTILYKLKLGEIVTTIPTIGFNVETVEYKNISFTVWDVGG  
 QDKIRPLWRHYFQNTQGLIFVVDSDNRERVNEAREELMRMLAEDELRLDAVLLVFANKQDLPNAMNAEIT  
 DKLGLHSLRHRNWIQATCATSGDGLYEGLDWLSNQLRNQK

TRTRPLEQKLISEEDLAANDILDYKDDDDKV

Chromatograms:	<a href="https://cdn.origene.com/chromatograms/mk6419_c05.zip">https://cdn.origene.com/chromatograms/mk6419_c05.zip</a>
----------------	---


[View online »](#)

**Restriction Sites:** SgfI-MluI

**Cloning Scheme:**



**ACCN:** NM\_001658

**ORF Size:** 543 bp

**OTI Disclaimer:** The molecular sequence of this clone aligns with the gene accession number as a point of reference only. However, individual transcript sequences of the same gene can differ through naturally occurring variations (e.g. polymorphisms), each with its own valid existence. This clone is substantially in agreement with the reference, but a complete review of all prevailing variants is recommended prior to use. [More info](#)

**OTI Annotation:** This clone was engineered to express the complete ORF with an expression tag. Expression varies depending on the nature of the gene.

**Components:** The ORF clone is ion-exchange column purified and shipped in a 2D barcoded Matrix tube containing 10ug of transfection-ready, dried plasmid DNA (reconstitute with 100 ul of water).

**Reconstitution Method:**

1. Centrifuge at 5,000xg for 5min.
2. Carefully open the tube and add 100ul of sterile water to dissolve the DNA.
3. Close the tube and incubate for 10 minutes at room temperature.
4. Briefly vortex the tube and then do a quick spin (less than 5000xg) to concentrate the liquid at the bottom.
5. Store the suspended plasmid at -20°C. The DNA is stable for at least one year from date of shipping when stored at -20°C.

**RefSeq:** [NM\\_001658.4](#)

**RefSeq Size:** 1901 bp

**RefSeq ORF:** 546 bp

**Locus ID:** 375

**UniProt ID:** [P84077](#)

Cytogenetics: 1q42.13

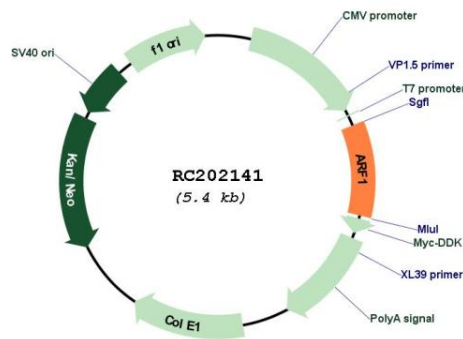
Domains: RAB, SAR, ARF, arf

Protein Pathways: Vibrio cholerae infection

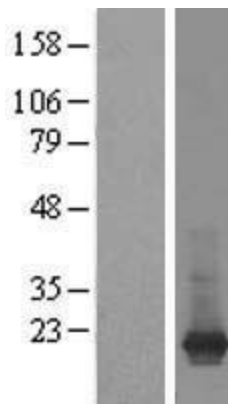
MW: 20.7 kDa

**Gene Summary:** ADP-ribosylation factor 1 (ARF1) is a member of the human ARF gene family. The family members encode small guanine nucleotide-binding proteins that stimulate the ADP-ribosyltransferase activity of cholera toxin and play a role in vesicular trafficking as activators of phospholipase D. The gene products, including 6 ARF proteins and 11 ARF-like proteins, constitute a family of the RAS superfamily. The ARF proteins are categorized as class I (ARF1, ARF2 and ARF3), class II (ARF4 and ARF5) and class III (ARF6), and members of each class share a common gene organization. The ARF1 protein is localized to the Golgi apparatus and has a central role in intra-Golgi transport. Multiple alternatively spliced transcript variants encoding the same protein have been found for this gene. [provided by RefSeq, Jul 2008]

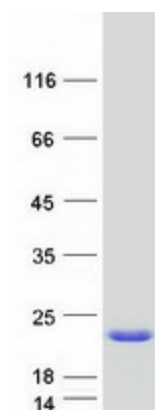
## Product images:



Circular map for RC202141



Western blot validation of overexpression lysate (Cat# [LY422627]) using anti-DDK antibody (Cat# [TA50011-100]). Left: Cell lysates from untransfected HEK293T cells; Right: Cell lysates from HEK293T cells transfected with [RC212099] using transfection reagent MegaTran 2.0 (Cat# [TT210002]).



Coomassie blue staining of purified ARF1 protein (Cat# [TP302141]). The protein was produced from HEK293T cells transfected with ARF1 cDNA clone (Cat# RC202141) using MegaTran 2.0 (Cat# [TT210002]).