

## Product datasheet for RC202137

### EAP30 (SNF8) (NM\_007241) Human Tagged ORF Clone

#### Product data:

Product Type:	Expression Plasmids
Product Name:	EAP30 (SNF8) (NM_007241) Human Tagged ORF Clone
Tag:	Myc-DDK
Symbol:	EAP30
Synonyms:	Dot3; EAP30; VPS22
Mammalian Cell Selection:	Neomycin
Vector:	pCMV6-Entry (PS100001)
E. coli Selection:	Kanamycin (25 ug/mL)
ORF Nucleotide Sequence:	>RC202137 ORF sequence Red=Cloning site Blue=ORF Green=Tags(s)

TTTTGTAATACGACTCACTATAGGGCGGCCGGAATTCGTCGACTGGATCCGGTACCGAGGAGATCTGCC  
GCC**CGATCGCC**

ATGCACCGCCGCGGGTGGGAGCTGGCGCCATCGCCAAGAAGAACTTGCAGAGGCCAAGTATAAGGAGC  
GAGGGACGGTCTGGCTGAGGACCAGCTAGCCCAGATGTCAAAGCAGTTGGACATGTTCAAGACCAACCT  
GGAGGAATTTGCCAGCAAACACAAGCAGGAGATCCGGAAGAATCCTGAGTTCGTGTGCAGTTCAGGAC  
ATGTGTGCAACCATTGGCGTGGATCCGCTGGCCTCTGGAAAAGGATTTTGGTCTGAGATGCTGGCGTGG  
GGGACTTCTATTACGAACTAGGTGTCAAATTATCGAAGTGTGCCTGGCGCTGAAGCATCGGAATGGAGG  
TCTGATAACTTTGGAGGAACTACATCAACAGGTGTTGAAGGGAAGGGCAAGTTCGCCCCAGGATGTCAGT  
CAAGATGACCTGATCAGAGCCATCAAGAACTAAAGGCACCTTGGCACTGGCTTCGGCATCATCCCTGTGG  
GCGGCACTTACCTCATTCACTGTTCCAGCTGAGCTCAATATGGATCACACCGTGGTGTGCAGCTGGC  
AGAGAAGAATGGCTACGTGACTGTCAAGGAGGATCAAAGCCAGTCTTAAATGGGAGACCGAGCGAGCGCG  
CAAGTGTGGAACACCTGCTGAAGGAAGGGTTGGCGTGGCTGGACTTACAGGCCCCAGGGGAGGCCCACT  
ACTGGCTGCCAGCTCTTCACTGACCTCTACTCCCAGGAGATTACAGCTGAGGAGGCCAGAGAAGCCCT  
CCCC

**ACGCGT**ACGCGGCCGCTCGAGCAGAACTCATCTCAGAAGAGGATCTGGCAGCAAATGATATCCTGGATT  
ACAAGGATGACGACGATAAGGTTTAA



[View online »](#)

**Protein Sequence:** >RC202137 protein sequence  
Red=Cloning site Green=Tags(s)

MHRRGVGAGAIAKKKLAEAKYKERGTVLAEDQLAQMSKQLDMFKTNLEEFASKHKQEIRKNPEFRVQFQD  
 MCATIGVDPLASGKGFWSEMLGVGDFYELGVQIIIEVCLALKHRNGGLITLLEELHQVLKGRGKFAQDVS  
 QDDLIRAIKKLALGTGFGIIPVGGTYLIQSVPAELNMDHTVVLQLAEKNGYVTVSEIKASLKWETERAR  
 QVLEHLLKEGLAWLDLQAPGEAHYWLPAFDTLYSQEITAEAREALP

TRTRPLEQKLISEEDLAANDILDYKDDDDKV

**Chromatograms:** [https://cdn.origene.com/chromatograms/mk6018\\_c11.zip](https://cdn.origene.com/chromatograms/mk6018_c11.zip)

**Restriction Sites:** SgfI-MluI

**Cloning Scheme:**

Cloning sites used for ORF Shuttling:



\* The last codon before the Stop codon of the ORF

**ACCN:** NM\_007241

**ORF Size:** 774 bp

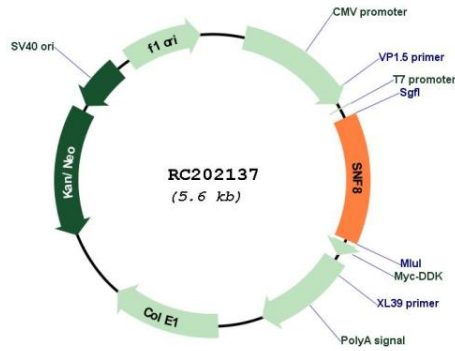
**OTI Disclaimer:** The molecular sequence of this clone aligns with the gene accession number as a point of reference only. However, individual transcript sequences of the same gene can differ through naturally occurring variations (e.g. polymorphisms), each with its own valid existence. This clone is substantially in agreement with the reference, but a complete review of all prevailing variants is recommended prior to use. [More info](#)

**OTI Annotation:** This clone was engineered to express the complete ORF with an expression tag. Expression varies depending on the nature of the gene.

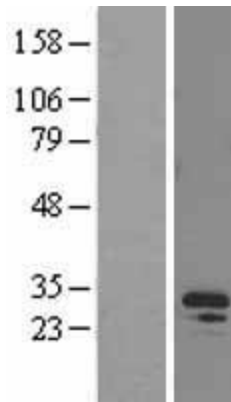
**Components:** The ORF clone is ion-exchange column purified and shipped in a 2D barcoded Matrix tube containing 10ug of transfection-ready, dried plasmid DNA (reconstitute with 100 ul of water).

<b>Reconstitution Method:</b>	<ol style="list-style-type: none"><li>1. Centrifuge at 5,000xg for 5min.</li><li>2. Carefully open the tube and add 100ul of sterile water to dissolve the DNA.</li><li>3. Close the tube and incubate for 10 minutes at room temperature.</li><li>4. Briefly vortex the tube and then do a quick spin (less than 5000xg) to concentrate the liquid at the bottom.</li><li>5. Store the suspended plasmid at -20°C. The DNA is stable for at least one year from date of shipping when stored at -20°C.</li></ol>
<b>Note:</b>	Plasmids are not sterile. For experiments where strict sterility is required, filtration with 0.22um filter is required.
<b>RefSeq:</b>	<a href="#">NM_007241.4</a>
<b>RefSeq Size:</b>	1226 bp
<b>RefSeq ORF:</b>	777 bp
<b>Locus ID:</b>	11267
<b>UniProt ID:</b>	<a href="#">Q96H20</a>
<b>Cytogenetics:</b>	17q21.32
<b>Domains:</b>	EAP30
<b>Protein Families:</b>	Transcription Factors
<b>Protein Pathways:</b>	Endocytosis
<b>MW:</b>	28.9 kDa
<b>Gene Summary:</b>	The protein encoded by this gene is a component of the endosomal sorting complex required for transport II (ESCRT-II), which regulates the movement of ubiquitinated transmembrane proteins to the lysosome for degradation. This complex also interacts with the RNA polymerase II elongation factor (ELL) to overcome the repressive effects of ELL on RNA polymerase II activity. Several transcript variants encoding different isoforms have been found for this gene. [provided by RefSeq, Nov 2015]

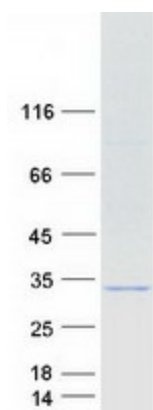
Product images:



Circular map for RC202137



Western blot validation of overexpression lysate (Cat# [LY402117]) using anti-DDK antibody (Cat# [TA50011-100]). Left: Cell lysates from untransfected HEK293T cells; Right: Cell lysates from HEK293T cells transfected with RC202137 using transfection reagent MegaTran 2.0 (Cat# [TT210002]).



Coomassie blue staining of purified SNF8 protein (Cat# [TP302137]). The protein was produced from HEK293T cells transfected with SNF8 cDNA clone (Cat# RC202137) using MegaTran 2.0 (Cat# [TT210002]).