

## Product datasheet for RC202133

### MAGEB1 (NM\_177415) Human Tagged ORF Clone

#### Product data:

Product Type:	Expression Plasmids
Product Name:	MAGEB1 (NM_177415) Human Tagged ORF Clone
Tag:	Myc-DDK
Symbol:	MAGEB1
Synonyms:	CT3.1; DAM10; MAGE-Xp; MAGEL1
Mammalian Cell Selection:	Neomycin
Vector:	pCMV6-Entry (PS100001)
E. coli Selection:	Kanamycin (25 ug/mL)
ORF Nucleotide Sequence:	>RC202133 representing NM_177415. Blue=ORF Red=Cloning site Green=Tag(s)

```
GCTCGTTTGTAGTGAACCGTCAGAATTTGTAAACGACTCACTATAGGGCCGCCGGGAATTCGTCGACTG
GATCCGGTACCGAGGAGATCTGCCGCCGCGATCGCC
ATGCCTCGGGGTGAGAAGTAAGTCCGTGCTCGTGAGAAACGCCGCAAGGCGCGAGAGGAGACCCAG
GGTCTCAAGTTGCTCACGCCACTGCAGCAGAGAAAGAGGAGTGCCTCCTCCTCTCTGTTTTAGGG
GATACTCCACAAGCTCCCCTGCTGCTGGCATTCCCCAGAAGCCTCAGGGAGCTCCACCCACCACCCT
GCTGCTGCAGCTGTGTCATGTACCGAATCTGACGAAGGTGCCAAATGCCAAGGTGAGGAAAATGCAAGT
TTCTCCCAGGCCACAACATCCACTGAGAGCTCAGTCAAAGATCCTGTAGCCTGGGAGGCAGGAATGCTG
ATGCATTCATTCTACGTAAGTATAAAATGAGAGAGCCATTATGAAGGCAGATATGCTGAAGTTGTT
GATGAAAAGTACAAGGATCACTTCACTGAGATCCTCAATGGAGCCTCTCGCCGCTTGGAGCTCGTCTTT
GGCCTTGATTTGAAGGAAGACAACCTAGTGGCCACACCTACACCCTCGTCAGTAAGCTAAACCTCACC
AATGATGGAAACCTGAGCAATGATTGGGACTTTCCAGGAATGGGCTTCTGATGCCTCTCCTGGGTGTG
ATCTTCTTAAAGGGCACTCTGCCACCGAGGAAGAGATCTGGAATTCATGAATGTGTTGGGAGCCTAT
GATGGAGAGGAGCACTTAATCTATGGGGAACCCGTAAGTTCATCACCAAGATCTGGTGACGAAAAAA
TATCTGAAGTACGAGCAGGTGCCAACAGTGATCCCCACGCTATCAATTCCTATGGGGTCCGAGAGCC
TATGCTGAAACCACCAAGATGAAAGTCTCGAGTTTTGGCCAAGATGAATGGTGCCACTCCCCGTGAC
TTCCATCCCATTATGAAGAGGCTTTGAGAGATGAGGAAGAGAGGCCAAGTCCGATCCAGTGTTAGA
GCCAGGCGTCGCACTACTGCCACGACTTTAGAGCGCGTTCTAGAGCCCCATTACGAGGTCCTCCAC
CCCATG
ACGCGTACGCGGCCGCTCGAGCAGAACTCATCTCAGAAGAGGATCTGGCAGCAATGATATCCTGGAT
TACAAGGATGACGACGATAAGGTTTAAACGGCCGGC
```



[View online »](#)

**Protein Sequence:** >Peptide sequence encoded by RC202133  
 Blue=ORF Red=Cloning site Green=Tag(s)

MPRGQKSKLRAREKRRKAREETQGLKVAHATAAEKEECPSSSPVLGDTPTSSPAAGIPQKPGAPPTTT  
 AAAAVSCTESDEGAKCQGEENASFQATTSTESSVKDPVAWEAGMLMHF ILRKYKMRPIMKADMLKVV  
 DEKYKDHFFEILNGASRRLEL VFGLDLKEDNPSGHTYTLVSKLNLNDGNLSNDWDFPRNGLLMPLLGV  
 IFLLKGNASATEEEIWKFMNVLGAYDGEHLIYGEPRKFITQDLVQEYLYKYEQVPSNDPPRYQFLWGPRA  
 YAETTKMKVLEFLAKMNGATPRDFPSHYEEALRDEEERAQVRSRRARRRTTATFRARSRAPFSRSSH  
 PM  
 TRTRPLEQKLISEEDLAANDILDYKDDDDKV

**Chromatograms:** [https://cdn.origene.com/chromatograms/mk6310\\_h12.zip](https://cdn.origene.com/chromatograms/mk6310_h12.zip)

**Restriction Sites:** SgfI-MluI

**Cloning Scheme:**



**ACCN:** NM\_177415

**ORF Size:** 1041 bp

**OTI Disclaimer:** The molecular sequence of this clone aligns with the gene accession number as a point of reference only. However, individual transcript sequences of the same gene can differ through naturally occurring variations (e.g. polymorphisms), each with its own valid existence. This clone is substantially in agreement with the reference, but a complete review of all prevailing variants is recommended prior to use. [More info](#)

**OTI Annotation:** This clone was engineered to express the complete ORF with an expression tag. Expression varies depending on the nature of the gene.

**Components:** The ORF clone is ion-exchange column purified and shipped in a 2D barcoded Matrix tube containing 10ug of transfection-ready, dried plasmid DNA (reconstitute with 100 ul of water).

**Reconstitution Method:**

1. Centrifuge at 5,000xg for 5min.
2. Carefully open the tube and add 100ul of sterile water to dissolve the DNA.
3. Close the tube and incubate for 10 minutes at room temperature.
4. Briefly vortex the tube and then do a quick spin (less than 5000xg) to concentrate the liquid at the bottom.
5. Store the suspended plasmid at -20°C. The DNA is stable for at least one year from date of shipping when stored at -20°C.

**Note:** Plasmids are not sterile. For experiments where strict sterility is required, filtration with 0.22um filter is required.

**RefSeq:** [NM\\_177415.3](#)

**RefSeq Size:** 1782 bp

**RefSeq ORF:** 1044 bp

**Locus ID:** 4112

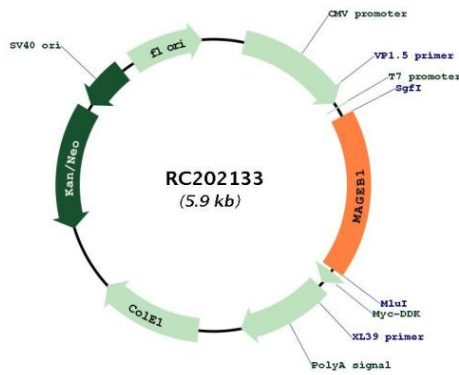
**UniProt ID:** [P43366](#)

**Cytogenetics:** Xp21.2

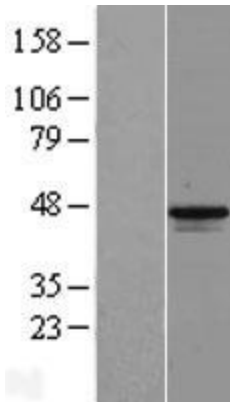
**MW:** 39 kDa

**Gene Summary:** This gene is a member of the MAGEB gene family. The members of this family have their entire coding sequences located in the last exon, and the encoded proteins show 50 to 68% sequence identity to each other. The promoters and first exons of the MAGEB genes show considerable variability, suggesting that the existence of this gene family enables the same function to be expressed under different transcriptional controls. This gene is localized in the DSS (dosage-sensitive sex reversal) critical region, and expressed in testis and in a significant fraction of tumors of various histological types. This gene and other MAGEB members are clustered on chromosome Xp22-p21. Multiple alternatively spliced transcript variants encoding the same protein have been found for this gene, however, the full length nature of some variants has not been defined. [provided by RefSeq, Jul 2008]

Product images:



Circular map for RC202133



Western blot validation of overexpression lysate (Cat# [LY406154]) using anti-DDK antibody (Cat# [TA50011-100]). Left: Cell lysates from untransfected HEK293T cells; Right: Cell lysates from HEK293T cells transfected with [RC224906] using transfection reagent MegaTran 2.0 (Cat# [TT210002]).