

Product datasheet for RC202127L3

CPSF7 (NM_024811) Human Tagged Lenti ORF Clone

Product data:

Product Type:	Expression Plasmids
Product Name:	CPSF7 (NM_024811) Human Tagged Lenti ORF Clone
Tag:	Myc-DDK
Symbol:	CPSF7
Synonyms:	CFIm59
Mammalian Cell Selection:	Puromycin
Vector:	pLenti-C-Myc-DDK-P2A-Puro (PS100092)
E. coli Selection:	Chloramphenicol (34 ug/mL)
ORF Nucleotide Sequence:	The ORF insert of this clone is exactly the same as(RC202127).
Restriction Sites:	SgfI-MluI
Cloning Scheme:	

Cloning sites used for ORF Shuttling:



* The last codon before the Stop codon of the ORF.

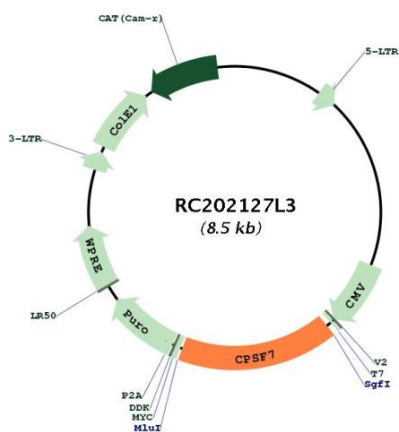
ACCN:	NM_024811
ORF Size:	1413 bp



[View online »](#)

OTI Disclaimer:	The molecular sequence of this clone aligns with the gene accession number as a point of reference only. However, individual transcript sequences of the same gene can differ through naturally occurring variations (e.g. polymorphisms), each with its own valid existence. This clone is substantially in agreement with the reference, but a complete review of all prevailing variants is recommended prior to use. More info
OTI Annotation:	This clone was engineered to express the complete ORF with an expression tag. Expression varies depending on the nature of the gene.
Components:	The ORF clone is ion-exchange column purified and shipped in a 2D barcoded Matrix tube containing 10ug of transfection-ready, dried plasmid DNA (reconstitute with 100 ul of water).
Reconstitution Method:	<ol style="list-style-type: none"> 1. Centrifuge at 5,000xg for 5min. 2. Carefully open the tube and add 100ul of sterile water to dissolve the DNA. 3. Close the tube and incubate for 10 minutes at room temperature. 4. Briefly vortex the tube and then do a quick spin (less than 5000xg) to concentrate the liquid at the bottom. 5. Store the suspended plasmid at -20°C. The DNA is stable for at least one year from date of shipping when stored at -20°C.
RefSeq:	NM_024811.2 , NP_079087.2
RefSeq Size:	3764 bp
RefSeq ORF:	1545 bp
Locus ID:	79869
UniProt ID:	Q8N684
Cytogenetics:	11q12.2
Domains:	RRM
MW:	52.1 kDa
Gene Summary:	Cleavage factor Im (CFIm) is one of six factors necessary for correct cleavage and polyadenylation of pre-mRNAs. CFIm is composed of three different subunits of 25, 59, and 68 kDa, and it functions as a heterotetramer, with a dimer of the 25 kDa subunit binding to two of the 59 or 68 kDa subunits. The protein encoded by this gene represents the 59 kDa subunit, which can interact with the splicing factor U2 snRNP Auxiliary Factor (U2AF) 65 to link the splicing and polyadenylation complexes. [provided by RefSeq, Oct 2016]

Product images:



Circular map for RC202127L3