

Product datasheet for RC202122

SEC11C (NM_033280) Human Tagged ORF Clone

Product data:

Product Type: Expression Plasmids
Product Name: SEC11C (NM_033280) Human Tagged ORF Clone
Tag: Myc-DDK
Symbol: SEC11C
Synonyms: SEC11L3; SPC21; SPCS4C
Mammalian Cell Selection: Neomycin
Vector: pCMV6-Entry (PS100001)
E. coli Selection: Kanamycin (25 ug/mL)
ORF Nucleotide Sequence: >RC202122 ORF sequence
 Red=Cloning site Blue=ORF Green=Tags(s)

TTTTGTAATACGACTCACTATAGGGCGGCCGGAATTCGTCGACTGGATCCGGTACCGAGGAGATCTGCC
GCC**CGATCGCC**

ATGGTGCCTGCGGGCGCCGTGGGGGCTCATCTCCCGCGTCCGGCTTGGATATCTTCGGGGACCTGAAGA
AGATGAACAAGCGCCAGCTCTATTACCAGGTTTTAACTTCGCCATGATCGTGTCTTCTGCACTCATGAT
ATGAAAGGCTTGATCGTGCTCACAGGCAGTGAGAGCCCCATCGTGGTGGTGTGAGTGGCAGTATGGAG
CCGGCCTTTCACAGAGGAGACCTCCTGTCTCACAATTTCCGGGAAGACCCAATCAGAGCTGGTGAAA
TAGTTGTTTTAAAGTTGAAGGACGAGACATTCGAATAGTTCACAGAGTAATCAAAGTTCATGAAAAAGA
TAATGGAGACATCAAATTTCTGACTAAAGGAGATAATAATGAAGTTGATGATAGAGGCTGTACAAAGAA
GGCCAGAAGTGGCTGAAAAAGAGGACGTGGTGGGAAGAGCAAGAGGGTTTTTACCATATGTTGGTATGG
TCACCATAATAATGAATGACTATCCAAAATTCAAGTATGCTCTTTGGCTGTAATGGGTGCATATGTGTT
ACTAAAACGTGAATCC

ACGCGTACGCGGCCGCTCGAGCAGAACTCATCTCAGAAGAGGATCTGGCAGCAAATGATATCCTGGATT
ACAAGGATGACGACGATAAGGTTTAA

Protein Sequence: >RC202122 protein sequence
 Red=Cloning site Green=Tags(s)

MVRAGAVGAHLPASGLDIFGDLKKNRQLYYQVLFNFIWGLIVLTGSESPVVVLSGSME
PAFHRGDLLFLTNFREDPIRAGEIVVFKVEGRDIPVHRVIKVEKDNKFLTKGDNNEVDDRGLYKE
GQNWLEKKDVVGRARGFLPYVGMVTIIMNDYPKFKYALLAVMGAYVLLKRES

TRTRPLEQKLISEEDLAANDILDYKDDDDKV



[View online »](#)

Chromatograms: https://cdn.origene.com/chromatograms/mk6001_c07.zip

Restriction Sites: SgfI-MluI

Cloning Scheme:



ACCN: NM_033280

ORF Size: 576 bp

OTI Disclaimer: The molecular sequence of this clone aligns with the gene accession number as a point of reference only. However, individual transcript sequences of the same gene can differ through naturally occurring variations (e.g. polymorphisms), each with its own valid existence. This clone is substantially in agreement with the reference, but a complete review of all prevailing variants is recommended prior to use. [More info](#)

OTI Annotation: This clone was engineered to express the complete ORF with an expression tag. Expression varies depending on the nature of the gene.

Components: The ORF clone is ion-exchange column purified and shipped in a 2D barcoded Matrix tube containing 10ug of transfection-ready, dried plasmid DNA (reconstitute with 100 ul of water).

Reconstitution Method:

1. Centrifuge at 5,000xg for 5min.
2. Carefully open the tube and add 100ul of sterile water to dissolve the DNA.
3. Close the tube and incubate for 10 minutes at room temperature.
4. Briefly vortex the tube and then do a quick spin (less than 5000xg) to concentrate the liquid at the bottom.
5. Store the suspended plasmid at -20°C. The DNA is stable for at least one year from date of shipping when stored at -20°C.

RefSeq: [NM_033280.4](#)

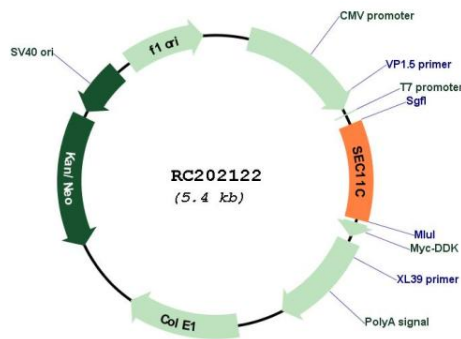
RefSeq Size: 793 bp

RefSeq ORF: 579 bp

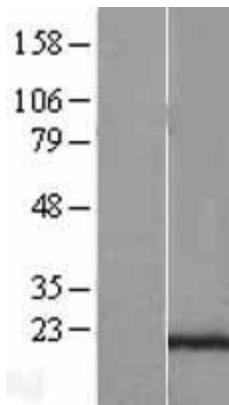
Locus ID: 90701

UniProt ID: [Q9BY50](#)
Cytogenetics: 18q21.32
Protein Families: Protease, Transmembrane
Protein Pathways: Protein export
MW: 21.5 kDa
Gene Summary: Component of the microsomal signal peptidase complex which removes signal peptides from nascent proteins as they are translocated into the lumen of the endoplasmic reticulum. [UniProtKB/Swiss-Prot Function]

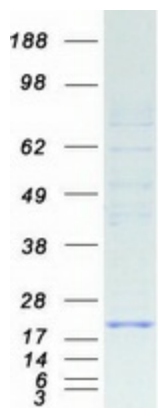
Product images:



Circular map for RC202122



Western blot validation of overexpression lysate (Cat# [LY403241]) using anti-DDK antibody (Cat# [TA50011-100]). Left: Cell lysates from untransfected HEK293T cells; Right: Cell lysates from HEK293T cells transfected with RC202122 using transfection reagent MegaTran 2.0 (Cat# [TT210002]).



Coomassie blue staining of purified SEC11C protein (Cat# [TP302122]). The protein was produced from HEK293T cells transfected with SEC11C cDNA clone (Cat# RC202122) using MegaTran 2.0 (Cat# [TT210002]).