

Product datasheet for RC202121

PAR2 (F2RL1) (NM_005242) Human Tagged ORF Clone

Product data:

Product Type:	Expression Plasmids
Product Name:	PAR2 (F2RL1) (NM_005242) Human Tagged ORF Clone
Tag:	Myc-DDK
Symbol:	PAR2
Synonyms:	GPR11; PAR2
Mammalian Cell Selection:	Neomycin
Vector:	pCMV6-Entry (PS100001)
E. coli Selection:	Kanamycin (25 ug/mL)
ORF Nucleotide Sequence:	>RC202121 ORF sequence Red=Cloning site Blue=ORF Green=Tags(s)

TTTTGTAATACGACTCACTATAGGGCGGCCGGAATTCGTCGACTGGATCCGGTACCGAGGAGATCTGCC
GCC**CGATCGCC**

ATGCGGAGCCCCAGCGCGCGTGGCTGCTGGGGCCGCCATCCTGCTAGCAGCCTCTCTCTCCTGCAGTG
GCACCATCCAAGGAACCAATAGATCCTCTAAAGGAAGAAGCCTTATTGGTAAGGTTGATGGCACATCCCA
CGTCACTGGAAAAGGAGTTACAGTTGAAACAGTCTTTTCTGTGGATGAGTTTTCTGCATCTGTCCCTCACT
GGAAAAGTACCAGTGTCTTCCAATTGTCTACACAATTGTGTTTGGTGGGTTTGGCAAGTAACG
GCATGGCCCTGTGGTCTTTCTTTCCGAACTAAGAAGAAGCACCCCTGCTGTGATTTACATGGCCAACT
GGCCTTGGCTGACCTCCTCTCTGTCATCTGGTTCCCTTGAAGATTGCCTATCACATACATGGCAACAAC
TGGATTTATGGGGAAGCTCTTTGTAATGTGCTTATTGGCTTTTTCTATGGCAACATGTAAGTTCCATTC
TCTTCATGACCTGCCTCAGTGTGCAGAGGATTGGGTCATCGTGAACCCCATGGGCACTCCAGGAAGAA
GGCAAACATTGCCATTGGCATCTCCCTGGCAATATGGCTGCTGATTCTGCTGGTCACCATCCCTTTGTAT
GTCGTGAAGCAGACCATCTTCATTCCTGCCCTGAACATCACGACCTGTCATGATGTTTTGGCTGAGCAGC
TCTTGGTGGGAGACATGTTCAATTAATTCTCTCTCTGCCATTGGGGTCTTTCTGTTCCAGCCTTCTCT
CACAGCCTCTGCCTATGTGCTGATGATCAGAATGCTGCGATCTTCTGCCATGGATGAAAAGTACAGAGAAG
AAAAGGAAGAGGGCCATCAAACCTATTGCTCTGCTGCTGGCCATGTACCTGATGCTTCACTCCTTAGTA
ACCTTCTGCTTGTGGTGCAATATTTCTGATTAAGAGCCAGGGCCAGGCCATGTCTATGCCCTGTACAT
TGTAGCCCTCTGCCTCTCTACCCCTAACAGCTGCATCGACCCCTTTGTCTATTACTTTGTTTCACATGAT
TTCAGGGATCATGCAAAGAACGCTCTCCTTTGCCGAAGTGTCCGCACTGTAAGCAGATGCAAGTATCCC
TCACCTCAAAGAAACACTCCAGGAAATCCAGCTTACTCTTCAAGTTCAACCACTGTTAAGACCTCCTA
T

ACGCGTACGCGGCCGCTCGAGCAGAAACTCATCTCAGAAGAGGATCTGGCAGCAAATGATATCCTGGATT
ACAAGGATGACGACGATAAGGTTTAA



[View online >](#)

Protein Sequence: >RC202121 protein sequence
Red=Cloning site Green=Tags(s)

MRSPSAAWLLGAAILLAASLSCSGTIQGTNRSSKGRSLIGKVDGTSHTVGKGVTVETVFSVDEFSASVLT
 GKLTTFVLPVIVYIVFVVGLPVSNMGALWVFLFRTKKKHPAVIYMANLADLLSVIWFPLKIAYHIHGNN
 WIYGEALCNVLIGFFYGNMYCSILFMTCLSVQRYWVIVNPMGHSRKKANIAIGISLAIWLLILLVTIPLY
 VVKQTFIFIPALNITTCNDVLPQQLLVGDMFNYFLSLAIGVFLFPAFLTASAYVLMIRMLRSSAMDENSEK
 KRKRAIKLIVSVLAMYLICFTPSNLLL VVHYFLIKSQGQSHVYALYIVALCLSTLNSCIDPFVYYFVSHD
 FRDHAKNALLCRSVRTVKQMQVSLTSSKKHSRKSSTSSSTTVKTSY

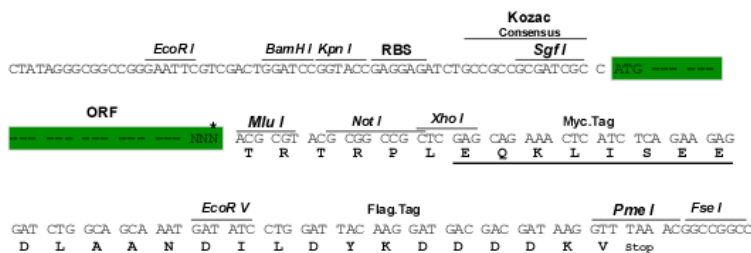
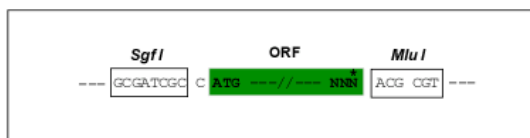
TRTRPLEQKLISEEDLAANDILDYKDDDDKV

Chromatograms: https://cdn.origene.com/chromatograms/mk6001_c06.zip

Restriction Sites: SgfI-MluI

Cloning Scheme:

Cloning sites used for ORF Shuttling:



* The last codon before the Stop codon of the ORF

ACCN: NM_005242

ORF Size: 1191 bp

OTI Disclaimer: The molecular sequence of this clone aligns with the gene accession number as a point of reference only. However, individual transcript sequences of the same gene can differ through naturally occurring variations (e.g. polymorphisms), each with its own valid existence. This clone is substantially in agreement with the reference, but a complete review of all prevailing variants is recommended prior to use. [More info](#)

OTI Annotation: This clone was engineered to express the complete ORF with an expression tag. Expression varies depending on the nature of the gene.

Components: The ORF clone is ion-exchange column purified and shipped in a 2D barcoded Matrix tube containing 10ug of transfection-ready, dried plasmid DNA (reconstitute with 100 ul of water).

Reconstitution Method:

1. Centrifuge at 5,000xg for 5min.
2. Carefully open the tube and add 100ul of sterile water to dissolve the DNA.
3. Close the tube and incubate for 10 minutes at room temperature.
4. Briefly vortex the tube and then do a quick spin (less than 5000xg) to concentrate the liquid at the bottom.
5. Store the suspended plasmid at -20°C. The DNA is stable for at least one year from date of shipping when stored at -20°C.

RefSeq: [NM_005242.6](#)

RefSeq Size: 2883 bp

RefSeq ORF: 1194 bp

Locus ID: 2150

UniProt ID: [P55085](#)

Cytogenetics: 5q13.3

Domains: 7tm_1

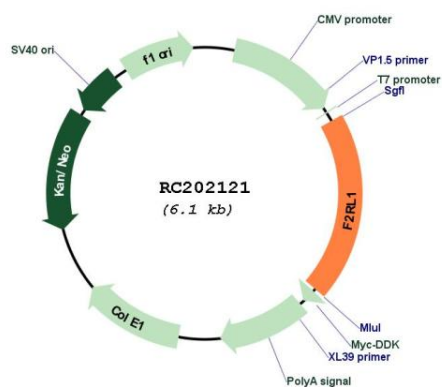
Protein Families: Druggable Genome, GPCR, Transmembrane

Protein Pathways: Neuroactive ligand-receptor interaction

MW: 44.1 kDa

Gene Summary: This gene encodes a member of the G-protein coupled receptor 1 family of proteins. The encoded cell surface receptor is activated through proteolytic cleavage of its extracellular amino terminus, resulting in a new amino terminus that acts as a tethered ligand that binds to an extracellular loop domain. Activation of the receptor has been shown to stimulate vascular smooth muscle relaxation, dilate blood vessels, increase blood flow, and lower blood pressure. This protein is also important in the inflammatory response, as well as innate and adaptive immunity. [provided by RefSeq, Jun 2016]

Product images:



Circular map for RC202121