

Product datasheet for RC202110

ACTR10 (NM_018477) Human Tagged ORF Clone

Product data:

Product Type:	Expression Plasmids
Product Name:	ACTR10 (NM_018477) Human Tagged ORF Clone
Tag:	Myc-DDK
Symbol:	ACTR10
Synonyms:	ACTR11; Arp10; Arp11; HARP11
Mammalian Cell Selection:	Neomycin
Vector:	pCMV6-Entry (PS100001)
E. coli Selection:	Kanamycin (25 ug/mL)
ORF Nucleotide Sequence:	>RC202110 ORF sequence Red=Cloning site Blue=ORF Green=Tags(s)

TTTTGTAATACGACTCACTATAGGGCGGCCGGAATTCGTCGACTGGATCCGGTACCGAGGAGATCTGCC
GCC**CGATCGCC**

ATGCCGCTCTACGAGGGCTGGGGAGCGGGGAGAAGACGGCGGTCTGATCGACCTGGGAGAGGCCCT
TTACCAAGTGTGGATTTGCTGGAGAACTGGTCCAAGATGTATAATTCCTAGTGTGATAAAAAGAGCTGG
GATGCCTAAGCCTGTCAGAGTTGTTTCAGTATAATCAATACAGAAGAATTATATTCCTACCTAAAGGAA
TTCATCCACATACTATATTTTCAGGCATCTATTGGTGAATCCAGAGACCGCCGAGTTGTGATTATCGAAT
CGGTATTATGTCCTTCTCACTTCAGAGAGACACTCACTCGTGTCTTTTCAAATATTTTGGAGTTCCATC
TGTCTTGCTTGCCTCAAGTCATCTAATGGCTCTTCTGACGCTTGAATTAATTCTGCCATGGTCCTAGAT
TGTGGATATAGGGAAAGCCTGGTGTACCCATATATGAAGGAATCCAGTTCTAAATTTGTTGGGGAGCAC
TACCCCTAGGAGGAAAAGCTCTTCACAAAGAGTTGAAACTCAACTATTGGAACAATGTAAGTGTGACAC
AAGTGTGCTAAAGAACAGAGCCTCCCTCAGTGATGGGTTTCAGTCCGGAAGGTGTCTTAGAGGACATT
AAAGCGCGTACTTGCTTTGTAAGTGATCTGAAGCGAGGACTAAAAATCCAAGCAGCAAAATTTAATTTG
ATGGGAATAATGAGCGTCCCTCCCACCCCAAATGTTGACTATCCATTAGATGGAGAGAAGATTTTACA
TATCCTTGGATCAATCAGAGATTCAGTTGTGAAATTTCTTTTGAACAAGATAATGAAGAGCAATCAGTT
GCCACTTTAATATTGGATTCCCTTATACAGTGTCCGATAGACACCAGGAAGCAACTAGCAGAGAATTTGG
TAGTCATAGGTGGCACTTCTATGTTGCCAGGATTTCTCCACAGATTGCTTGCAGAAATAAGGTATTTGGT
AGAAAAACCAAAATATAAAAAAGCACTTGGCACTAAGACATTTTGAATTCATACTCCACCTGCAAAAAGCT
AATTGTGTGGCCTGGTTGGGAGGGGCTATTTTGGAGCATTACAAGATATACTTGGGAGCCGTTCTGTTT
CAAAGGAATATTATAATCAGACGGGCGGTATACCTGATTGGTGTCTCTCAATAACCCACCTTTGGAAT
GATGTTTGTGTCGGGAAAACCAACCCTCTGATGAAGAGAGCATTTTCCACTGAGAAA

ACGCGTACGCGGCCGCTCGAGCAGAACTCATCTCAGAAGAGGATCTGGCAGCAATGATATCCTGGATT
ACAAGGATGACGACGATAAGGTTTAA



[View online >](#)

Protein Sequence: >RC202110 protein sequence
Red=Cloning site Green=Tags(s)

MPLYEGLSGGGEKTAVVIDLGEAFTKCGFAGETGPRCIIPSVIKRAGMPKPVRRVQYNINTEELYSYLKE
 FIHILYFRHLLVNPRDRRVVIIIESVLCPSHFRETLTRVLFKYFEVPSVLLAPSHLMALLTLGINSAMVLD
 CGYRESLVLPIYEGIPVLNCW GALPLGGKALHKELETQLLEQCTVDTSVAKEQSLPSVMGSVPEGVLEDI
 KARTCFVSDLKRG LKIQA AAKFNIDGNNERPSPPPNVVDYPLDGEKILHILGSI RDSVVEILFEQDN EEQSV
 ATLILDSL IQCPIDTRKQLAENLVVIGGTSMLPGFLHRL LAEIRYLVEKPKYK KALGTKTFRIHTPPAKA
 NCVAWLGGAIFGALQDILGSR SRSKEYYNQTGRIPDWCSLNNP PLEMMFDVGKTQPPLMKRAFSTEK

TRTRPLEQKLISEEDLAANDILDYKDDDDKV

Chromatograms: https://cdn.origene.com/chromatograms/mk6130_c09.zip

Restriction Sites: SgfI-MluI

Cloning Scheme:



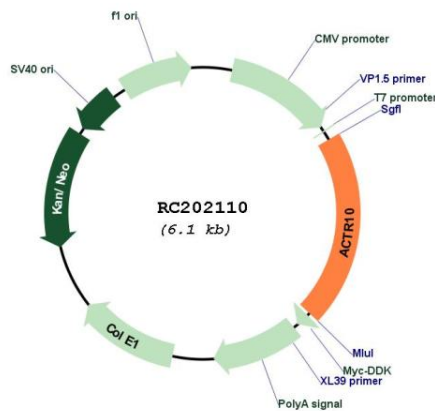
ACCN: NM_018477

ORF Size: 1251 bp

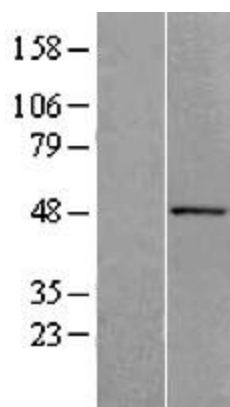
OTI Disclaimer: Due to the inherent nature of this plasmid, standard methods to replicate additional amounts of DNA in E. coli are highly likely to result in mutations and/or rearrangements. Therefore, OriGene does not guarantee the capability to replicate this plasmid DNA. Additional amounts of DNA can be purchased from OriGene with batch-specific, full-sequence verification at a reduced cost. Please contact our customer care team at custsupport@origene.com or by calling 301.340.3188 option 3 for pricing and delivery.

The molecular sequence of this clone aligns with the gene accession number as a point of reference only. However, individual transcript sequences of the same gene can differ through naturally occurring variations (e.g. polymorphisms), each with its own valid existence. This clone is substantially in agreement with the reference, but a complete review of all prevailing variants is recommended prior to use. [More info](#)

OTI Annotation:	This clone was engineered to express the complete ORF with an expression tag. Expression varies depending on the nature of the gene.
Components:	The ORF clone is ion-exchange column purified and shipped in a 2D barcoded Matrix tube containing 10ug of transfection-ready, dried plasmid DNA (reconstitute with 100 ul of water).
Reconstitution Method:	<ol style="list-style-type: none">1. Centrifuge at 5,000xg for 5min.2. Carefully open the tube and add 100ul of sterile water to dissolve the DNA.3. Close the tube and incubate for 10 minutes at room temperature.4. Briefly vortex the tube and then do a quick spin (less than 5000xg) to concentrate the liquid at the bottom.5. Store the suspended plasmid at -20°C. The DNA is stable for at least one year from date of shipping when stored at -20°C.
RefSeq:	NM_018477.3
RefSeq Size:	2451 bp
RefSeq ORF:	1254 bp
Locus ID:	55860
UniProt ID:	Q9NZ32
Cytogenetics:	14q23.1
Domains:	ACTIN
MW:	46.3 kDa

Product images:

Circular map for RC202110



Western blot validation of overexpression lysate (Cat# [LY402689]) using anti-DDK antibody (Cat# [TA50011-100]). Left: Cell lysates from untransfected HEK293T cells; Right: Cell lysates from HEK293T cells transfected with RC202110 using transfection reagent MegaTran 2.0 (Cat# [TT210002]).