

Product datasheet for **RC202109**

PTTG1IP (NM_004339) Human Tagged ORF Clone

Product data:

Product Type: Expression Plasmids
Product Name: PTTG1IP (NM_004339) Human Tagged ORF Clone
Tag: Myc-DDK
Symbol: PTTG1IP
Synonyms: C21orf1; C21orf3; PBF
Mammalian Cell Selection: Neomycin
Vector: pCMV6-Entry (PS100001)
E. coli Selection: Kanamycin (25 ug/mL)
ORF Nucleotide Sequence: >RC202109 ORF sequence
Red=Cloning site Blue=ORF Green=Tags(s)

TTTTGTAATACGACTCACTATAGGGCGGCCGGAATTCGTCGACTGGATCCGGTACCGAGGAGATCTGCC
GCC**CGATCGCC**

ATGGGCCCCGGAGTGGCCCGGGCCGACGCCGTA**CTGGAGGTTGCGCCTCGGTGGCGCCGCTGCTCC**
TGCTGCTCATCCCGGTGGCCGCGCAGGAGCCTCCCGAGCTGCTTGTCTCAGAACAACAAAAC
CTGTGAAGAGTGCCTGAAGAACGTCTCCTGTCTTTGGTGAACACTAACAAGGCTGTCTGGACTACCA
GTTACAAGCGTCTTGCCACCGGCTTCCCTTTGTAATTGAGCTCTGCACGCTGGGAGTTTGTGGTGA
ACTTTGAGCGCTGATCATCACCATGTCGGTAGTCGGGGAAACCCTCCTCTGGGATTGCCATCTGCTG
CTGCTGCTGCTGCAGGAGGAAGAGGAGCCGGAAGCCGGACAGGAGTGAGGAGAAGGCCATGCGTGAGCGG
GAGGAGAGGCGGATACGGCAGGAGGAACGGAGAGCAGAGATGAAGACAAGACATGATGAAATCAGAAAAA
AATATGGCCTGTTAAAGAAGAAAACCCGTATGCTAGATTTGAAAACAAC

ACGCGTACGCGGCCGCTCGAGCAGAACTCATCTCAGAAGAGGATCTGGCAGCAATGATATCCTGGATT
ACAAGGATGACGACGATAAGGTTTAA

Protein Sequence: >RC202109 protein sequence
Red=Cloning site Green=Tags(s)

MAPGVARGPTYWRLRLGGAALLLLIPVAAAQEPGAACSQNTNKTCEECLKNVSLWCNTNKACLDYP
VTSVLPASLCKLSSARWVCWVNFEAL IITMSVVGTTLLGIAICCCCCRRKRSRKPDRSEEKAMRER
EERRIRQEERRAEMKTRHDEIRKKYGLFKEENPYARFENN

TRTRPLEQKLISEEDLAANDILDYKDDDDKV

Chromatograms: https://cdn.origene.com/chromatograms/mk6011_f06.zip



[View online »](#)

Restriction Sites: SgfI-MluI

Cloning Scheme:



ACCN: NM_004339

ORF Size: 540 bp

OTI Disclaimer: The molecular sequence of this clone aligns with the gene accession number as a point of reference only. However, individual transcript sequences of the same gene can differ through naturally occurring variations (e.g. polymorphisms), each with its own valid existence. This clone is substantially in agreement with the reference, but a complete review of all prevailing variants is recommended prior to use. [More info](#)

OTI Annotation: This clone was engineered to express the complete ORF with an expression tag. Expression varies depending on the nature of the gene.

Components: The ORF clone is ion-exchange column purified and shipped in a 2D barcoded Matrix tube containing 10ug of transfection-ready, dried plasmid DNA (reconstitute with 100 ul of water).

Reconstitution Method:

1. Centrifuge at 5,000xg for 5min.
2. Carefully open the tube and add 100ul of sterile water to dissolve the DNA.
3. Close the tube and incubate for 10 minutes at room temperature.
4. Briefly vortex the tube and then do a quick spin (less than 5000xg) to concentrate the liquid at the bottom.
5. Store the suspended plasmid at -20°C. The DNA is stable for at least one year from date of shipping when stored at -20°C.

RefSeq: [NM_004339.4](#)

RefSeq Size: 2843 bp

RefSeq ORF: 543 bp

Locus ID: 754

UniProt ID: [P53801](#)

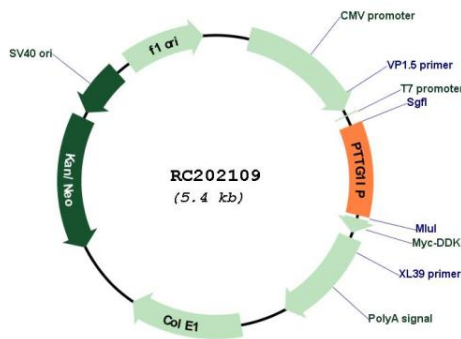
Cytogenetics: 21q22.3

Protein Families: Druggable Genome, Transmembrane

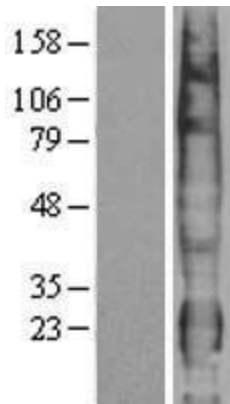
MW: 20.3 kDa

Gene Summary: This gene encodes a single-pass type I integral membrane protein, which binds to pituitary tumor-transforming 1 protein (PTTG1), and facilitates translocation of PTTG1 into the nucleus. Coexpression of this protein and PTTG1 induces transcriptional activation of basic fibroblast growth factor. Alternatively spliced transcript variants have been found for this gene. [provided by RefSeq, Nov 2013]

Product images:



Circular map for RC202109



Western blot validation of overexpression lysate (Cat# [LY401383]) using anti-DDK antibody (Cat# [TA50011-100]). Left: Cell lysates from untransfected HEK293T cells; Right: Cell lysates from HEK293T cells transfected with RC202109 using transfection reagent MegaTran 2.0 (Cat# [TT210002]).