

Product datasheet for **RC202095**

CHN 1 (CHN1) (NM_001025201) Human Tagged ORF Clone

Product data:

Product Type:	Expression Plasmids
Product Name:	CHN 1 (CHN1) (NM_001025201) Human Tagged ORF Clone
Tag:	Myc-DDK
Symbol:	CHN 1
Synonyms:	ARHGAP2; CHN; DURS2; NC; RHOGAP2
Mammalian Cell Selection:	Neomycin
Vector:	pCMV6-Entry (PS100001)
E. coli Selection:	Kanamycin (25 ug/mL)



[View online »](#)

ORF Nucleotide Sequence:

>RC202095 ORF sequence
 Red=Cloning site Blue=ORF Green=Tags(s)

TTTTGTAATACGACTCACTATAGGGCGGCCGGGAATTCGTCGACTGGATCCGGTACCGAGGAGATCTGCC
 GCC**CGCATCGCC**

ATGGCCCTGACCCTGTTTGATACAGATGAATATAGACCTCCTGTTTGAAATCTTACTTATATCAGCTAC
 AACAGGAAGCCCCTCATCCTCGAAGAATTACCTGACTTGCAGAGGTGAAAACAGACCAAAGTATTATGG
 AAGAGAGTTTCATGGCATGATCTCCAGAGAAGCAGCCGACCAGCTCTTGATTGTGGCTGAGGGGAGCTAC
 CTCATCCGGGAGAGCCAGCGGCAGCCAGGGACCTACACTTTGGCTTTAAGATTTGGAAGTCAAACCAGAA
 ACTTCAGGCTCTACTACGATGGCAAGCACTTTGTTGGGGAGAAACGCTTTGAGTCCATCCACGATCTGGT
 GACTGATGGCTTGATTACTCTCTATATTGAAACCAAGGCAGCAGAATACATTGCCAAGATGACGATAAAC
 CCAATTTATGAGCACGTAGGATACACAACCTTAAACAGAGAGCCAGCATACAAAAAACATATGCCAGTCC
 TGAAGAGACACATGATGAGAGAGATTCTACAGGCCAGGATGGGGTGTGAGAGAAAAGTTGACATCACT
 TGTTAGAAGCAACTCTGAAAGAAAACGAGCAAATTCAAAATATGAAAAGATTACAATTTCAAGGTG
 CATACTTCAGAGGGCCACTGGTGTGAATACTGTGCCAATTTATGTGGGGTCTCATTGCTCAGGGAG
 TGAATGTGCAGATTGTGGTTTGAATGTTCCATAAGCAGTGTCCAAAGATGGTCCCAAATGACTGTAGCC
 AGACTTGAAGCATGTCAAAAAGGTGTACAGCTGTGACCTTACGACGCTCGTAAAAGCACATACCACTAAG
 CGGCCAATGGTGGTAGACATGTGCATCAGGGAGATTGAGTCTAGAGGTCTTAATTCTGAAGGACTATACC
 GAGTATCAGGATTTAGTGACCTAATTGAAGATGTCAAGATGGCTTTGACAGAGATGGTGAAGGAGCAGA
 TATTTCTGTGAACATGTATGAAGATCAACATTATCACTGGTGCCTTAACTGTACTTCAGGGATTTG
 CCAATTCACCTCATTACATATGATGCCTACCCTAAGTTTATAGAATCTGCCAAAATATGGATCCGGATG
 AGCAATTGGAACCCCTTCATGAAGCACTGAAACTACTGCCACCTGCTCACTGCGAAACCCCTCCGGTATG
 CATGGCACATCTAAAGAGAGTGAACCTCCACGAAAAGGAGAATCTTATGAATGCAGAGAACCTTGAATC
 GTCTTTGGACCCACCCTTATGAGATCTCCAGAAGTACGACCCATGGCTGCATTGAATGATATACGGTATC
 AGAGACTGGTGGTGGAGCTGCTTATCAAAAACGAAGACATTTTATTT

ACGCGTACGCGGCCGCTCGAGCAGAACTCATCTCAGAAGAGGATCTGGCAGCAAATGATATCCTGGATT
 ACAAGGATGACGACGATAAGGTTTAA

Protein Sequence:

>RC202095 protein sequence
 Red=Cloning site Green=Tags(s)

MALTLFDTDEYRPPVWKSYLEQLQEQEAPHPRITCTCEVENRPKYYGREFHGMISREAADQLLIVAEGSY
 LIRESQRQPGTYTLALRFGSQRNFRLLYYDGKHFVGEKRFESIHDLVTDGLITLYIETKAAEYIAKMTIN
 PIYEHVGYTTLNREPAYKKHMPVLKETHDERDSTGQDGVSEKRLTSLVRRATLKENEQIPKYEKIHNFKV
 HTFRGPHWCEYCANFMWGLIAQGVKCADCGLNVHKQCSKMPNDCKPDLKHVKKVYSCDLTTLVKAHTTK
 RPMVDMCIREIESRGLNSEGLYRVSGFSDLIEDVKMAFDRDGEKADISVNMVEDINIITGALKLYFRDL
 PIPLITYDAYPKFIESAKIMDPDEQLETLHEALKLLPPAHCETLRYLMAHLKRVTLHEKENLMNAENLGI
 VFGPTLMRSPELDAMAALNDIRYQRLVVELLIKNEIDILF

TRTRPLEQKLISEEDLAANDILDYKDDDDKV

Chromatograms:

https://cdn.origene.com/chromatograms/mk6303_c11.zip

Restriction Sites:

Sgfl-Mlul

Cloning Scheme:


ACCN: NM_001025201

ORF Size: 1377 bp

OTI Disclaimer: The molecular sequence of this clone aligns with the gene accession number as a point of reference only. However, individual transcript sequences of the same gene can differ through naturally occurring variations (e.g. polymorphisms), each with its own valid existence. This clone is substantially in agreement with the reference, but a complete review of all prevailing variants is recommended prior to use. [More info](#)

OTI Annotation: This clone was engineered to express the complete ORF with an expression tag. Expression varies depending on the nature of the gene.

Components: The ORF clone is ion-exchange column purified and shipped in a 2D barcoded Matrix tube containing 10ug of transfection-ready, dried plasmid DNA (reconstitute with 100 ul of water).

- Reconstitution Method:**
1. Centrifuge at 5,000xg for 5min.
 2. Carefully open the tube and add 100ul of sterile water to dissolve the DNA.
 3. Close the tube and incubate for 10 minutes at room temperature.
 4. Briefly vortex the tube and then do a quick spin (less than 5000xg) to concentrate the liquid at the bottom.
 5. Store the suspended plasmid at -20°C. The DNA is stable for at least one year from date of shipping when stored at -20°C.

RefSeq: [NM_001025201.1](#), [NP_001020372.1](#)

RefSeq Size: 2446 bp

RefSeq ORF: 1302 bp

Locus ID: 1123

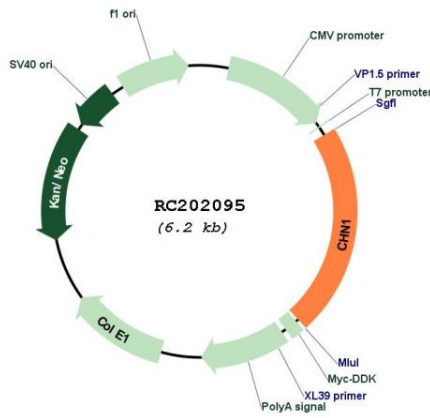
UniProt ID: [P15882](#)

Cytogenetics: 2q31.1

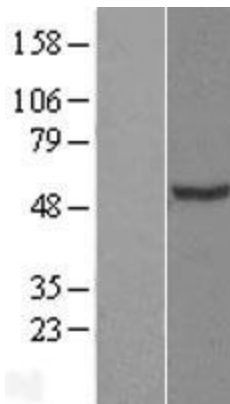
MW: 53.2 kDa

Gene Summary: This gene encodes GTPase-activating protein for ras-related p21-rac and a phorbol ester receptor. It is predominantly expressed in neurons, and plays an important role in neuronal signal-transduction mechanisms. Mutations in this gene are associated with Duane's retraction syndrome 2 (DURS2). Alternatively spliced transcript variants encoding different isoforms have been described for this gene. [provided by RefSeq, Apr 2011]

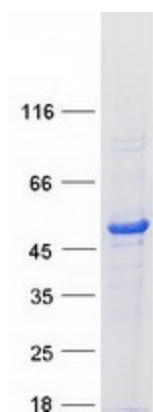
Product images:



Circular map for RC202095



Western blot validation of overexpression lysate (Cat# [LY422480]) using anti-DDK antibody (Cat# [TA50011-100]). Left: Cell lysates from untransfected HEK293T cells; Right: Cell lysates from HEK293T cells transfected with RC202095 using transfection reagent MegaTran 2.0 (Cat# [TT210002]).



Coomassie blue staining of purified CHN1 protein (Cat# [TP302095]). The protein was produced from HEK293T cells transfected with CHN1 cDNA clone (Cat# RC202095) using MegaTran 2.0 (Cat# [TT210002]).