

## Product datasheet for **RC202088**

### TRIM21 (NM\_003141) Human Tagged ORF Clone

#### Product data:

Product Type:	Expression Plasmids
Product Name:	TRIM21 (NM_003141) Human Tagged ORF Clone
Tag:	Myc-DDK
Symbol:	TRIM21
Synonyms:	RNF81; Ro/SSA; RO52; SSA; SSA1
Mammalian Cell Selection:	Neomycin
Vector:	pCMV6-Entry (PS100001)
E. coli Selection:	Kanamycin (25 ug/mL)



[View online »](#)

**ORF Nucleotide Sequence:**

>RC202088 ORF sequence  
 Red=Cloning site Blue=ORF Green=Tags(s)

TTTTGTAATACGACTCACTATAGGGCGGCCGGAATTCGTCGACTGGATCCGGTACCGAGGAGATCTGCC  
 GCC**GCGATCGCC**

ATGGCTTCAGCAGCAGCTTGCACATGATGTTGGGAGGAGTACATGCCCTATCTGCCTGGACCCCTTCG  
 TGGAGCCTGTGAGCATCGAGTGTGGCCACAGCTTCTGCCAGGAATGCATCTCTCAGTTGGGAAAGGTGG  
 GGGCAGCGTCTGTCTGTGTGCCGGCAGCGCTTCTGCTCAAGAATCTCCGGCCCAATCGACAGCTAGCC  
 AACATGGTGAACAACCTTAAAGAAATCAGCCAGGAGGCCAGAGAGGGCACACAGGGGAACGGTGTGCAG  
 TGCATGGAGAGAGACTTCACCTGTTCTGTGAGAAAGATGGGAAGGCCCTTGTGGGTATGTGCCAGTC  
 TCGGAAACACCGTGACCACGCCATGGTCCCTCTTGAGGAGGCTGCACAGGAGTACCAGGAGAAGCTCCAG  
 GTGGCATTAGGGAACTGAGAAGAAAGCAGGAGTTGGCTGAGAAGTTGGAAGTGGAAATTGCAATAAAGA  
 GAGCAGACTGGAAGAAAACAGTGGAAACACAGAAATCTAGGATTCACGCAGAGTTTGTGCAGCAAAAAA  
 CTTCTGGTTGAAGAAGAACAGAGGCAGCTGCAGGAGCTGGAGAAGGATGAGAGGGAGCAGCTGAGAATC  
 CTGGGGGAGAAAGAGGCCAAGCTGGCCAGCAGAGCCAGGCCCTACAGGAGCTCATCTCAGAGCTAGATC  
 GAAGGTGCCACAGCTCAGCACTGGAAGTCTGCAGGAGGTGATAATTGTCTGGAAGGAGTGAGTCCTG  
 GAACCTGAAGGACCTGGATATTACCTCTCCAGAACTCAGGAGTGTGTGCCATGTGCCAGGGCTGAAGAAG  
 ATGCTGAGGACATGTGCAGTCCACATCACTCTGGATCCAGACACAGCCAAATCCGTGGCTGATACTTTCAG  
 AAGATCGGAGACAAGTGAAGGCTTGGAGACACCCAGCAGAGCATACCTGGAATGAAGAGAGATTTGATAG  
 TTATCCTATGGTCTGGTGGCCAGCACTTCTACTCTGGAACAACTACTGGGAGGTAGATGTGACAGGA  
 AAGGAGCCTGGACCTGGTGTCTGCAGAGACTCTGTGCGCAGGAAGGGGCACCTTTTGTAGTTCCA  
 AGAGTGGCTTCTGGACAATTTGGTTGTGGAACAACAAAAATATGAGGCTGGCACCTACCCAGACTCC  
 CCTCCACCTTCAGGTGCCTCCATGCCAAGTTGGGATTTTCTGGACTATGAGGCTGGCATGGTCTCCTTC  
 TACAACATCACTGACCATGGCTCCCTCATCTACTCTCTGAATGTGCCTTTACAGGACCTCTGCGGC  
 CCTTCTCAGTCTGGTTTCAATGATGGAGGAAAAACACAGCCCTCTAACCTCTGTCCACTGAATAT  
 TGGATCACAAGGATCCACTGACTAT

**ACGCGT**ACGCGGCCGCTCGAGCAGAACTCATCTCAGAAGAGGATCTGGCAGCAATGATATCCTGGATT  
 ACAAGGATGACGACGATAAGGTTTAA

**Protein Sequence:**

>RC202088 protein sequence  
 Red=Cloning site Green=Tags(s)

MASAARLTMMWEEVTCPICLDPFVEPVSIIEGHSFCQECISQVGKGGSVCPVCRQRFLLKRLRPNRQLA  
 NMVNNLKEISQEAAREGTQGERCAVHGERLHLFCEKDGKALCWVCAQSRKHRDHAMVPLEEAAQEYQEKLQ  
 VALGELRRKQELAEKLEVEIAIKRADWKKTVETQKSRIHAEFVQKNFLVEEEQRQLQELEKDEREQLRI  
 LGEKEAKLAQQSQALQELISELDRRCHSSALELLQEVIIIVLERSESWNLKDLITSPELRSVCHVPLKK  
 MLRTCAVHITLDPDTANPWLILSEDRRQVRLGDTQQSIPGNEERFDSYPMVLGAQHFHSGKHWEVDVTG  
 KEAWDLGVCRDSVRRKGHFLSSKSGFWTIWLNKQKYEAGTYPQTPHLQVPPCQVGFILDYEAGMVSF  
 YNITDHGSLIYSFSECAFTGPLRPFSPGFNDGGKNTAPLTLCPNLIGSQGSTDY

**TR**TRPLEQKLISEEDLAANDILDYKDDDDKV

**Chromatograms:**

[https://cdn.origene.com/chromatograms/mk6001\\_a08.zip](https://cdn.origene.com/chromatograms/mk6001_a08.zip)

**Restriction Sites:**

Sgfl-Mlul

**Cloning Scheme:**

**ACCN:** NM\_003141

**ORF Size:** 1425 bp

**OTI Disclaimer:** Due to the inherent nature of this plasmid, standard methods to replicate additional amounts of DNA in E. coli are highly likely to result in mutations and/or rearrangements. Therefore, OriGene does not guarantee the capability to replicate this plasmid DNA. Additional amounts of DNA can be purchased from OriGene with batch-specific, full-sequence verification at a reduced cost. Please contact our customer care team at [custsupport@origene.com](mailto:custsupport@origene.com) or by calling 301.340.3188 option 3 for pricing and delivery.

The molecular sequence of this clone aligns with the gene accession number as a point of reference only. However, individual transcript sequences of the same gene can differ through naturally occurring variations (e.g. polymorphisms), each with its own valid existence. This clone is substantially in agreement with the reference, but a complete review of all prevailing variants is recommended prior to use. [More info](#)

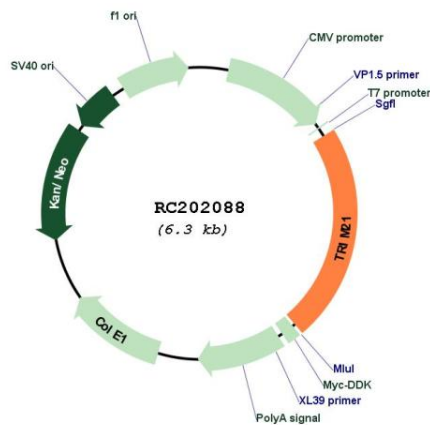
**OTI Annotation:** This clone was engineered to express the complete ORF with an expression tag. Expression varies depending on the nature of the gene.

**Components:** The ORF clone is ion-exchange column purified and shipped in a 2D barcoded Matrix tube containing 10ug of transfection-ready, dried plasmid DNA (reconstitute with 100 ul of water).

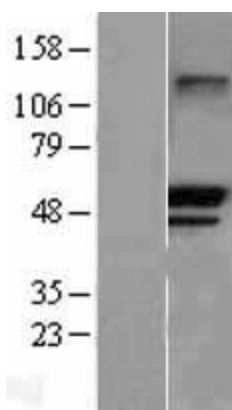
- Reconstitution Method:**
1. Centrifuge at 5,000xg for 5min.
  2. Carefully open the tube and add 100ul of sterile water to dissolve the DNA.
  3. Close the tube and incubate for 10 minutes at room temperature.
  4. Briefly vortex the tube and then do a quick spin (less than 5000xg) to concentrate the liquid at the bottom.
  5. Store the suspended plasmid at -20°C. The DNA is stable for at least one year from date of shipping when stored at -20°C.

<b>Note:</b>	Plasmids are not sterile. For experiments where strict sterility is required, filtration with 0.22um filter is required.
<b>RefSeq:</b>	<a href="#">NM_003141.4</a>
<b>RefSeq Size:</b>	1946 bp
<b>RefSeq ORF:</b>	1428 bp
<b>Locus ID:</b>	6737
<b>UniProt ID:</b>	<a href="#">P19474</a>
<b>Cytogenetics:</b>	11p15.4
<b>Domains:</b>	zf-B_box, RING, SPRY, PRY
<b>Protein Families:</b>	Druggable Genome
<b>Protein Pathways:</b>	Systemic lupus erythematosus
<b>MW:</b>	54.2 kDa
<b>Gene Summary:</b>	This gene encodes a member of the tripartite motif (TRIM) family. The TRIM motif includes three zinc-binding domains, a RING, a B-box type 1 and a B-box type 2, and a coiled-coil region. The encoded protein is part of the RoSSA ribonucleoprotein, which includes a single polypeptide and one of four small RNA molecules. The RoSSA particle localizes to both the cytoplasm and the nucleus. RoSSA interacts with autoantigens in patients with Sjogren syndrome and systemic lupus erythematosus. Alternatively spliced transcript variants for this gene have been described but the full-length nature of only one has been determined. [provided by RefSeq, Jul 2008]

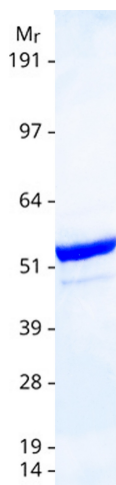
### Product images:



Circular map for RC202088



Western blot validation of overexpression lysate (Cat# [LY401090]) using anti-DDK antibody (Cat# [TA50011-100]). Left: Cell lysates from untransfected HEK293T cells; Right: Cell lysates from HEK293T cells transfected with RC202088 using transfection reagent MegaTran 2.0 (Cat# [TT210002]).



Coomassie blue staining of purified TRIM21 protein (Cat# [TP302088]). The protein was produced from HEK293T cells transfected with TRIM21 cDNA clone (Cat# RC202088) using MegaTran 2.0 (Cat# [TT210002]).