

Product datasheet for **RC202084**

IL1 alpha (IL1A) (NM_000575) Human Tagged ORF Clone

Product data:

Product Type:	Expression Plasmids
Product Name:	IL1 alpha (IL1A) (NM_000575) Human Tagged ORF Clone
Tag:	Myc-DDK
Symbol:	IL1 alpha
Synonyms:	IL-1 alpha; IL-1A; IL1; IL1-ALPHA; IL1F1
Mammalian Cell Selection:	Neomycin
Vector:	pCMV6-Entry (PS100001)
E. coli Selection:	Kanamycin (25 ug/mL)
ORF Nucleotide Sequence:	>RC202084 ORF sequence Red=Cloning site Blue=ORF Green=Tags(s)

TTTTGTAATACGACTCACTATAGGGCGGCCGGAATTCGTCGACTGGATCCGGTACCGAGGAGATCTGCC
GCC**CGATCGCC**

ATGGCCAAAGTTCAGACATGTTTGAAGACCTGAAGAAGCTGTACAGTAAAAATGAAGAAGACAGTTCTT
CCATTGATCATCTGTCTCTGAATCAGAAATCCTTCTATCATGTAAGCTATGGCCCACTCCATGAAGGCTG
CATGGATCAATCTGTGTCTCTGAGTATCTCTGAAACCTCTAAAACATCCAAGCTTACCTTCAAGGAGAGC
ATGGTGGTAGTAGCAACCAACGGGAAGGTTCTGAAGAAGAGACGGTTGAGTTTAAGCCAATCCATCACTG
ATGATGACCTGGAGGCCATCGCCAATGACTCAGAGGAAGAAATCATCAAGCCTAGGTCAGCACCTTTTAG
CTTCTGAGCAATGTGAAATACAACCTTTATGAGGATCATCAAATACGAATTCATCCTGAATGACGCCCTC
AATCAAAGTATAATTCGAGCCAATGATCAGTACCTCACGGCTGCTGCATTACATAATCTGGATGAAGCAG
TGAAATTTGACATGGGTGCTTATAAGTCATCAAAGGATGATGCTAAAATTACCGTGATTCTAAGAATCTC
AAAACTCAATTGTATGTGACTGCCAAGATGAAGACCAACCAAGTGTGCTGAAGGAGATGCCTGAGATA
CCCAAACCATCACAGGTAGTGAGACCAACCTCCTCTTCTTCTGGGAACTCACGGCACTAAGAATATT
TCACATCAGTTGCCCATCAAACCTGTTTATTGCCACAAAGCAAGACTACTGGGTGTGCTTGGCAGGGGG
GCCACCCTCTACTGACTTTTCAGATACTGAAAAACAGGCG

ACGCGTACGCGGCCGCTCGAGCAGAAACTCATCTCAGAAGAGGATCTGGCAGCAAATGATATCCTGGATT
ACAAGGATGACGACGATAAGGTTTAA



[View online »](#)

Protein Sequence: >RC202084 protein sequence
 Red=Cloning site Green=Tags(s)

MAKVPMFEDLKNCSYSENEEDSSSIDHLSLNQKSFYHVSYGPLHEGCMQSVLSLISETSKTSKLTFKES
 MVVVATNGKVLKKRRLSLSQSITDDDLLEAIANDSEEEIIKPRSAPFSFLSNVKYNFMRIIKYEFILNDAL
 NQSIIRANDQYL TAAALHNLDEAVKFDMGAYKSSKDDAKITVILRISKTQLYVTAQDEDQPVLKEMPEI
 PKTITGSETNLLFFWETHGTKNYFTSVAHPNLF IATKQDYWVCLAGPPSITDFQILENQA

TRTRPLEQKLISEEDLAANDILDYKDDDDKV

Chromatograms: https://cdn.origene.com/chromatograms/mk6540_d08.zip

Restriction Sites: SgfI-MluI

Cloning Scheme:



ACCN: NM_000575

ORF Size: 813 bp

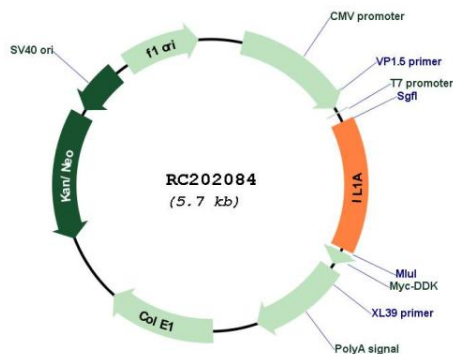
OTI Disclaimer: The molecular sequence of this clone aligns with the gene accession number as a point of reference only. However, individual transcript sequences of the same gene can differ through naturally occurring variations (e.g. polymorphisms), each with its own valid existence. This clone is substantially in agreement with the reference, but a complete review of all prevailing variants is recommended prior to use. [More info](#)

OTI Annotation: This clone was engineered to express the complete ORF with an expression tag. Expression varies depending on the nature of the gene.

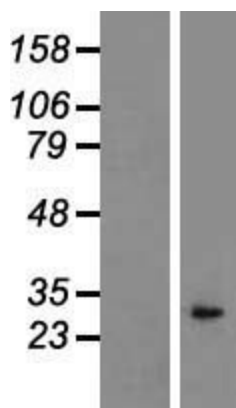
Components: The ORF clone is ion-exchange column purified and shipped in a 2D barcoded Matrix tube containing 10ug of transfection-ready, dried plasmid DNA (reconstitute with 100 ul of water).

Reconstitution Method:	<ol style="list-style-type: none">1. Centrifuge at 5,000xg for 5min.2. Carefully open the tube and add 100ul of sterile water to dissolve the DNA.3. Close the tube and incubate for 10 minutes at room temperature.4. Briefly vortex the tube and then do a quick spin (less than 5000xg) to concentrate the liquid at the bottom.5. Store the suspended plasmid at -20°C. The DNA is stable for at least one year from date of shipping when stored at -20°C.
Note:	Plasmids are not sterile. For experiments where strict sterility is required, filtration with 0.22um filter is required.
RefSeq:	NM_000575.5
RefSeq Size:	2943 bp
RefSeq ORF:	816 bp
Locus ID:	3552
UniProt ID:	P01583
Cytogenetics:	2q14.1
Protein Families:	Druggable Genome, Secreted Protein
Protein Pathways:	Apoptosis, Cytokine-cytokine receptor interaction, Graft-versus-host disease, Hematopoietic cell lineage, MAPK signaling pathway, Prion diseases, Type I diabetes mellitus
MW:	30.6 kDa
Gene Summary:	The protein encoded by this gene is a member of the interleukin 1 cytokine family. This cytokine is a pleiotropic cytokine involved in various immune responses, inflammatory processes, and hematopoiesis. This cytokine is produced by monocytes and macrophages as a proprotein, which is proteolytically processed and released in response to cell injury, and thus induces apoptosis. This gene and eight other interleukin 1 family genes form a cytokine gene cluster on chromosome 2. It has been suggested that the polymorphism of these genes is associated with rheumatoid arthritis and Alzheimer's disease. [provided by RefSeq, Jul 2008]

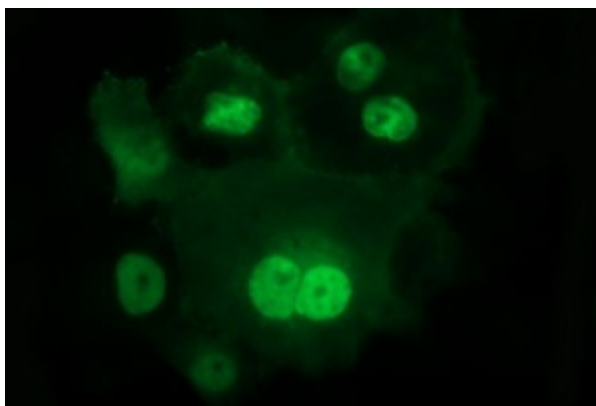
Product images:



Circular map for RC202084



Western blot validation of overexpression lysate (Cat# [LY424636]) using anti-DDK antibody (Cat# [TA50011-100]). Left: Cell lysates from untransfected HEK293T cells; Right: Cell lysates from HEK293T cells transfected with RC202084 using transfection reagent MegaTran 2.0 (Cat# [TT210002]).



Anti-IL1A mouse monoclonal antibody ([TA506849]) immunofluorescent staining of COS7 cells transiently transfected by pCMV6-ENTRY IL1A (RC202084).