

Product datasheet for RC202071L1

Noxa (PMAIP1) (NM_021127) Human Tagged Lenti ORF Clone

Product data:

Product Type:	Expression Plasmids
Product Name:	Noxa (PMAIP1) (NM_021127) Human Tagged Lenti ORF Clone
Tag:	Myc-DDK
Symbol:	Noxa
Synonyms:	APR; NOXA
Mammalian Cell Selection:	None
Vector:	pLenti-C-Myc-DDK (PS100064)
E. coli Selection:	Chloramphenicol (34 ug/mL)
ORF Nucleotide Sequence:	The ORF insert of this clone is exactly the same as(RC202071).
Restriction Sites:	SgfI-MluI
Cloning Scheme:	

Cloning sites used for ORF Shuttling:



* The last codon before the Stop codon of the ORF.

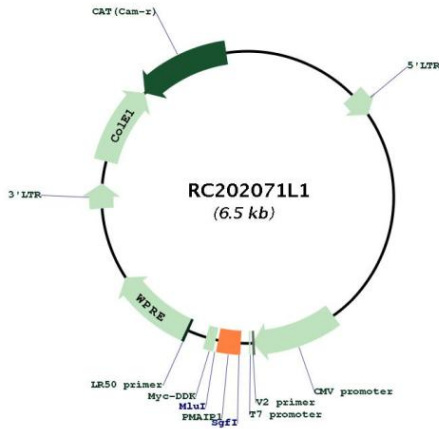
ACCN:	NM_021127
ORF Size:	162 bp



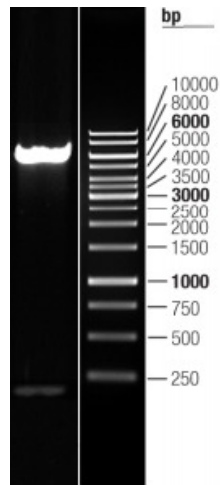
[View online »](#)

OTI Disclaimer:	The molecular sequence of this clone aligns with the gene accession number as a point of reference only. However, individual transcript sequences of the same gene can differ through naturally occurring variations (e.g. polymorphisms), each with its own valid existence. This clone is substantially in agreement with the reference, but a complete review of all prevailing variants is recommended prior to use. More info
OTI Annotation:	This clone was engineered to express the complete ORF with an expression tag. Expression varies depending on the nature of the gene.
Components:	The ORF clone is ion-exchange column purified and shipped in a 2D barcoded Matrix tube containing 10ug of transfection-ready, dried plasmid DNA (reconstitute with 100 ul of water).
Reconstitution Method:	<ol style="list-style-type: none">1. Centrifuge at 5,000xg for 5min.2. Carefully open the tube and add 100ul of sterile water to dissolve the DNA.3. Close the tube and incubate for 10 minutes at room temperature.4. Briefly vortex the tube and then do a quick spin (less than 5000xg) to concentrate the liquid at the bottom.5. Store the suspended plasmid at -20°C. The DNA is stable for at least one year from date of shipping when stored at -20°C.
RefSeq:	NM_021127.1
RefSeq Size:	1885 bp
RefSeq ORF:	165 bp
Locus ID:	5366
UniProt ID:	Q13794
Cytogenetics:	18q21.32
Protein Families:	Druggable Genome, Stem cell - Pluripotency
Protein Pathways:	p53 signaling pathway
MW:	5.8 kDa
Gene Summary:	This gene belongs to a pro-apoptotic subfamily within the BCL-2 protein family, referred to as the BCL-2 homology domain 3 (BH3)-only subfamily, which determine whether a cell commits to apoptosis. In response to death-inducing stimuli, BH3-only members inhibit the anti-apoptotic BCL-2 family members, which under steady-state conditions keep the multi-BH domain proteins BAX and BAK, in an inactive state. [provided by RefSeq, Aug 2020]

Product images:



Circular map for RC202071L1



Double digestion of RC202071L1 using SgfI and MluI