

## Product datasheet for RC202060

### STOM (NM\_004099) Human Tagged ORF Clone

#### Product data:

Product Type:	Expression Plasmids
Product Name:	STOM (NM_004099) Human Tagged ORF Clone
Tag:	Myc-DDK
Symbol:	STOM
Synonyms:	BND7; EPB7; EPB72
Mammalian Cell Selection:	Neomycin
Vector:	pCMV6-Entry (PS100001)
E. coli Selection:	Kanamycin (25 ug/mL)
ORF Nucleotide Sequence:	>RC202060 ORF sequence Red=Cloning site Blue=ORF Green=Tags(s)

TTTTGTAATACGACTCACTATAGGGCGGCCGGAATTCGTCGACTGGATCCGGTACCGAGGAGATCTGCC  
GCC**CGATCGCC**

ATGGCCGAGAAGCGGCACACACGGGACTCCGAAGCCAGCGGCTCCCCGACTCCTCAAGGACAGCCCCA  
GTAAGGGCCTTGGACCTTGGGATGGATTTTGGTGGCCTTCTCATTCTTATTCACCGTTATAACTTTCCC  
AATCTCAATATGGATGTGCATAAAGATTATAAAAGAGTATGAAAGAGCCATCATCTTTAGATTGGGTCGC  
ATTTTACAAGGAGGAGCCAAAGGACCTGGTTTGTTTTTTATTCTGCCATGCACTGACAGCTTCATCAAAG  
TGGACATGAGAACTATTTCAATTTGATATTCCTCCTCAGGAGATCCTCACAAAGGATTCAGTGACAATTAG  
CGTGGATGGTGTGGTCTATTACCGGTTAGAATGCAACCTGGCTGTGGCAAATATCACCAACGCTGAC  
TCAGCAACCCGCTTTTTGGCACAACTACTCTGAGGAATGTTCTGGGCACCAAGAATCTTTCTCAGATCC  
TCTCTGACAGAGAAGAAATTGCACACAACATGCAGTCTACTCTGGATGATGCCACTGATGCCTGGGGAAT  
AAAGGTGGAGCGTGTGGAATTAAGGATGTGAACTACCTGTGCAGCTCCAGAGAGCTATGGCTGCAGAA  
GCAGAAGCGTCCCGCGAGGCCCGCCAAGGTTATTGCAGCCGAAGGAGAAATGAATGCATCCAGGGCTC  
TGAAAGAAGCCTCCATGGTCATCACTGAATATCCTGCAGCCCTCAGCTCCGATACCTGCAGACTGAC  
CACCATTGCTGCTGAGAAAACTCAACAATTGTCTTCCCTCTGCCATAGATATGCTGCAAGGAATCATA  
GGGGCAAACACAGCCATCTAGGC

**ACGCGT**ACGCGGCCGCTCGAGCAGAAACTCATCTCAGAAGAGGATCTGGCAGCAAATGATATCCTGGATT  
ACAAGGATGACGACGATAAGGTTTAA



[View online »](#)

**Protein Sequence:** >RC202060 protein sequence  
Red=Cloning site Green=Tags(s)

MAEKRHTRDSEAQRLPDSFKDSPSKGLGPCGWILVAFSFLFTVITFPISIWMCIKIIEKEYERAIIFRLGR  
 ILQGGAKGPLFFILPCTDSFIKVMRTISFDIPPQEILTKDSVTISVDGVVYRQVQATLAVANITNAD  
 SATRLLAQTTLRNVLGTKNLSQILSDREEIAHNMQSTLDDATDAWGIKVERVEIKDVKLPVQLQRAMAAE  
 AEASREARAKVIAAEGEMNASRALKEASMVITEYPAALQLRYLQTLTTIAAEKNSTIVFPLPIDMLQGII  
 GAKHSHLG

TRTRPLEQKLISEEDLAANDILDYKDDDDKV

**Chromatograms:** [https://cdn.origene.com/chromatograms/mk6303\\_e12.zip](https://cdn.origene.com/chromatograms/mk6303_e12.zip)

**Restriction Sites:** SgfI-MluI

**Cloning Scheme:**



**ACCN:** NM\_004099

**ORF Size:** 864 bp

**OTI Disclaimer:** The molecular sequence of this clone aligns with the gene accession number as a point of reference only. However, individual transcript sequences of the same gene can differ through naturally occurring variations (e.g. polymorphisms), each with its own valid existence. This clone is substantially in agreement with the reference, but a complete review of all prevailing variants is recommended prior to use. [More info](#)

**OTI Annotation:** This clone was engineered to express the complete ORF with an expression tag. Expression varies depending on the nature of the gene.

**Components:** The ORF clone is ion-exchange column purified and shipped in a 2D barcoded Matrix tube containing 10ug of transfection-ready, dried plasmid DNA (reconstitute with 100 ul of water).

**Reconstitution Method:**

1. Centrifuge at 5,000xg for 5min.
2. Carefully open the tube and add 100ul of sterile water to dissolve the DNA.
3. Close the tube and incubate for 10 minutes at room temperature.
4. Briefly vortex the tube and then do a quick spin (less than 5000xg) to concentrate the liquid at the bottom.
5. Store the suspended plasmid at -20°C. The DNA is stable for at least one year from date of shipping when stored at -20°C.

**RefSeq:** [NM\\_004099.2](#)

**RefSeq Size:** 3198 bp

**RefSeq ORF:** 867 bp

**Locus ID:** 2040

**UniProt ID:** [P27105](#)

**Cytogenetics:** 9q33.2

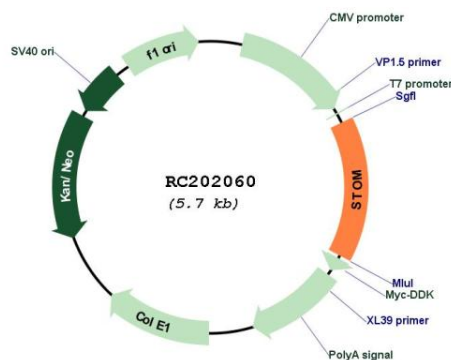
**Domains:** Band\_7

**Protein Families:** Transmembrane

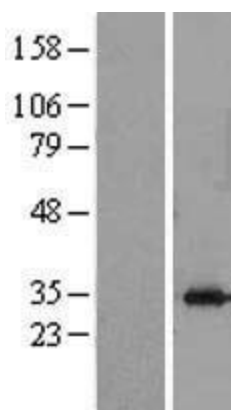
**MW:** 31.8 kDa

**Gene Summary:** This gene encodes a member of a highly conserved family of integral membrane proteins. The encoded protein localizes to the cell membrane of red blood cells and other cell types, where it may regulate ion channels and transporters. Loss of localization of the encoded protein is associated with hereditary stomatocytosis, a form of hemolytic anemia. There is a pseudogene for this gene on chromosome 6. Alternative splicing results in multiple transcript variants. [provided by RefSeq, Jul 2012]

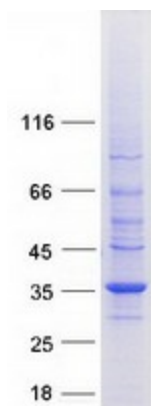
### Product images:



Circular map for RC202060



Western blot validation of overexpression lysate (Cat# [LY418214]) using anti-DDK antibody (Cat# [TA50011-100]). Left: Cell lysates from untransfected HEK293T cells; Right: Cell lysates from HEK293T cells transfected with RC202060 using transfection reagent MegaTran 2.0 (Cat# [TT210002]).



Coomassie blue staining of purified STOM protein (Cat# [TP302060]). The protein was produced from HEK293T cells transfected with STOM cDNA clone (Cat# RC202060) using MegaTran 2.0 (Cat# [TT210002]).