

Product datasheet for **RC202054**

EZH2 (NM_004456) Human Tagged ORF Clone

Product data:

Product Type:	Expression Plasmids
Product Name:	EZH2 (NM_004456) Human Tagged ORF Clone
Tag:	Myc-DDK
Symbol:	EZH2
Synonyms:	ENX-1; ENX1; EZH2b; KMT6; KMT6A; WVS; WVS2
Mammalian Cell Selection:	Neomycin
Vector:	pCMV6-Entry (PS100001)
E. coli Selection:	Kanamycin (25 ug/mL)



[View online »](#)

ORF Nucleotide Sequence:

>RC202054 ORF sequence
 Red=Cloning site Blue=ORF Green=Tags(s)

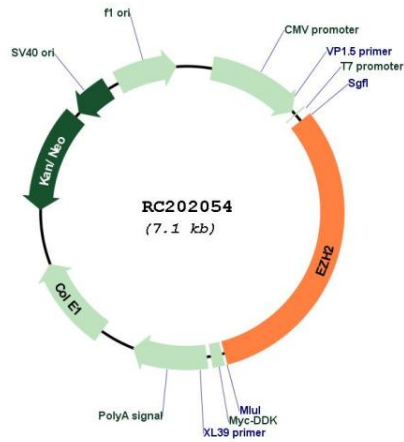
TTTTGTAATACGACTCACTATAGGGCGGCCGGGAATTCGTCGACTGGATCCGGTACCGAGGAGATCTGCC
 GCC**CGCATCGCC**

ATGGGCCAGACTGGGAAGAAATCTGAGAAGGGACCAGTTTGTGGCGGAAGCGTGTAAAATCAGAGTACA
 TGC GACTGAGACAGCTCAAGAGGTTTCAGACGAGCTGATGAAGTAAAGAGTATGTTTAGTTCCAATCGTCA
 GAAAAATTTGGAAAGAACGGAAATCTTAAACCAAGAATGGAAACAGCGAAGGATACAGCCTGTGCACATC
 CTGACTTCTGTGAGCTCATTGCGCGGGACTAGGGAGTGTTCGGTGACCAGTGACTTGGATTTTCCAACAC
 AAGTCATCCCATTAAGACTCTGAATGCAGTTGCTTCAGTACCCATAATGTATTCTTGGTCTCCCCTACA
 GCAGAATTTTATGGTGAAGATGAAACTGTTTTACATAACATTCCTTATATGGGAGATGAAGTTTLAGAT
 CAGGATGGTACTTTCATTGAAGAACTAATAAAAAATTATGATGGGAAAGTACACGGGGATAGAGAATGTG
 GGTATATAAATGATGAAATTTTGTGGAGTTGGTGAATGCCCTTGGTCAATATAATGATGATGACGATGA
 TGATGATGGAGACGATCCTGAAGAAAGAGAAGAAAAGCAGAAAGATCTGGAGGATCACCGAGATGATAAA
 GAAAGCCGCCACCTCGGAAATTCCTTCTGATAAAAATTTTGAAGCCATTCCTCAATGTTTCCAGATA
 AGGGCACAGCAGAAGAACTAAAGGAAAAATATAAAGAAGTACCCGAACAGCAGCTCCCAGGCCACTTCC
 TCCTGAATGTACCCCAACATAGATGGACCAATGCTAAATCTGTTTCAGAGAGAGCAAAGCTTACTACTCC
 TTTTCATACGCTTTTCTGTAGGCGATGTTTTAAATATGACTGCTTCTACATCGTAAGTGCATTTATCTT
 TTCATGCAACACCCAACACTTATAAGCGGAAGAACACAGAAACAGCTCTAGACAACAACTTGTGGACC
 ACAGTGTACCAGCATTTGGAGGGAGCAAAGGAGTTTGTCTGCTCTCACCGCTGAGCGGATAAAGACC
 CCACAAAACGTCCAGGAGGCCGAGAAGAGGACGGCTTCCCAATAACAGTAGCAGGCCAGCACCCCA
 CCATTAATGTGCTGGAATCAAAGGATACAGACAGTGATAGGGAAGCAGGGACTGAAACCGGGGGAGAGAA
 CAATGATAAAGAAGAAGAAGAGAAGAAAGATGAAACTTCGAGCTCCTCTGAAGCAAATTCGGTGTCAA
 ACACCAATAAAGATGAAGCCAAATATTGAACCTCTGAGAATGTGGAGTGGAGTGGTGTGAAGCCTCAA
 TGTTTAGAGTCTCATTGGCACTTACTATGACAATTTCTGTGCCATTGCTAGGTTAATTGGGACCAAAAC
 ATGTAGACAGGTGATGAGTTTLAGAGTCAAAGAATCTAGCATCATAGCTCCAGCTCCCGCTGAGGATGTG
 GATACTCTCCAAGGAAAAAGAAGAGGAAACACCGGTTGTGGGCTGCACACTGCAGAAAGATACAGCTGA
 AAAAGGACGGCTCCTTAACCATGTTTACAACATCAACCCTGTGATCATCCACGGCAGCCTTGTGACAG
 TTCGTGCCCTTGTGTGATAGCACAAAATTTTGTGAAAAGTTTGTCAATGTAGTTCAGAGTGTCAAAC
 CGCTTCCGGGATGCCGCTGCAAAGCACAGTGCAACCAAGCAGTGCCCGTGTACCTGGCTGTCCGAG
 AGTGTGACCTGACCTCTGTCTTACTTGTGGAGCCGCTGACCATTGGGACAGTAAAAATGTGTCTGCAA
 GAACTGCAGTATTCAGCGGGGCTCCAAAAAGCATCTATTGCTGGCACCATCTGACGTGGCAGGCTGGGGG
 ATTTTTATCAAAGATCCTGTGCAGAAAAATGAATTCATCTCAGAACTGTGGAGAGATTATTTCTCAAG
 ATGAAGCTGACAGAAGAGGGAAAGTGTATGATAAATACATGTGCAGCTTCTGTTCAACTGAACAATGA
 TTTTGTGGTGGATGCAACCCGCAAGGTAACAAAATTCGTTTTGCAAATCATTCCGGTAAATCCAACTGC
 TATGCAAAAGTTATGATGGTTAACGGTGATCACAGGATAGGTATTTTGGCAAGAGGCCATCCAGACTG
 CGAAGAGCTGTTTTTGGATTACAGATACAGCCAGGCTGATGCCCTGAAGTATGTCCGCATCGAAAGAGA
 AATGGAAATCCCT

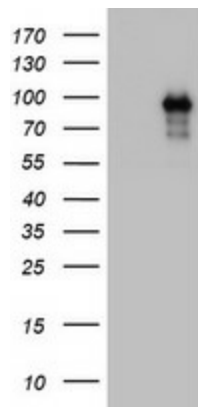
ACGCGTACGCGGCCGCTCGAGCAGAAACTCATCTCAGAAGAGGATCTGGCAGCAAATGATATCCTGGATT
 ACAAGGATGACGACGATAAGGTTTAA

Components:	The ORF clone is ion-exchange column purified and shipped in a 2D barcoded Matrix tube containing 10ug of transfection-ready, dried plasmid DNA (reconstitute with 100 ul of water).
Reconstitution Method:	<ol style="list-style-type: none">1. Centrifuge at 5,000xg for 5min.2. Carefully open the tube and add 100ul of sterile water to dissolve the DNA.3. Close the tube and incubate for 10 minutes at room temperature.4. Briefly vortex the tube and then do a quick spin (less than 5000xg) to concentrate the liquid at the bottom.5. Store the suspended plasmid at -20°C. The DNA is stable for at least one year from date of shipping when stored at -20°C.
Note:	Plasmids are not sterile. For experiments where strict sterility is required, filtration with 0.22um filter is required.
RefSeq:	NM_004456.5
RefSeq Size:	2723 bp
RefSeq ORF:	2256 bp
Locus ID:	2146
UniProt ID:	Q15910
Cytogenetics:	7q36.1
Domains:	myb_DNA-binding, SET
Protein Families:	Druggable Genome, Transcription Factors
MW:	86 kDa
Gene Summary:	This gene encodes a member of the Polycomb-group (PcG) family. PcG family members form multimeric protein complexes, which are involved in maintaining the transcriptional repressive state of genes over successive cell generations. This protein associates with the embryonic ectoderm development protein, the VAV1 oncoprotein, and the X-linked nuclear protein. This protein may play a role in the hematopoietic and central nervous systems. Multiple alternatively spliced transcript variants encoding distinct isoforms have been identified for this gene. [provided by RefSeq, Feb 2011]

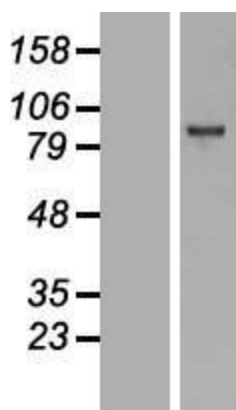
Product images:



Circular map for RC202054



HEK293T cells were transfected with the pCMV6-ENTRY control (Cat# [PS100001], Left lane) or pCMV6-ENTRY EZH2 (Cat# RC202054, Right lane) cDNA for 48 hrs and lysed. Equivalent amounts of cell lysates (5 ug per lane) were separated by SDS-PAGE and immunoblotted with anti-EZH2 (Cat# [TA803011]). Positive lysates [LY401416] (100ug) and [LC401416] (20ug) can be purchased separately from OriGene.



Western blot validation of overexpression lysate (Cat# [LY401416]) using anti-DDK antibody (Cat# [TA50011-100]). Left: Cell lysates from untransfected HEK293T cells; Right: Cell lysates from HEK293T cells transfected with RC202054 using transfection reagent MegaTran 2.0 (Cat# [TT210002]).



Coomassie blue staining of purified EZH2 protein (Cat# [TP302054]). The protein was produced from HEK293T cells transfected with EZH2 cDNA clone (Cat# RC202054) using MegaTran 2.0 (Cat# [TT210002]).