

## Product datasheet for RC202051

### D Box Binding Protein (DBP) (NM\_001352) Human Tagged ORF Clone

#### Product data:

Product Type:	Expression Plasmids
Product Name:	D Box Binding Protein (DBP) (NM_001352) Human Tagged ORF Clone
Tag:	Myc-DDK
Symbol:	D Box Binding Protein
Synonyms:	DABP; taxREB302
Mammalian Cell Selection:	Neomycin
Vector:	pCMV6-Entry (PS100001)
E. coli Selection:	Kanamycin (25 ug/mL)
ORF Nucleotide Sequence:	>RC202051 representing NM_001352 Red=Cloning site Blue=ORF Green=Tags(s)

TTTTGTAATACGACTCACTATAGGGCGGCCGGAATTCGTCGACTGGATCCGGTACCGAGGAGATCTGCC  
GCC**CGATCGCC**

ATGGCGCGCCTGTGAGCGACAGGACCCCGGCCCTCTGCTGCTGGGCGGCCCGCCGGGACACCCCTG  
GCGGGGAGCGCTGCTTGGGTTGCGGAGCCTTCTGCAGGGACCAGCAAGCCAAAGAGCCGCCAGCTG  
TCTCCTGAAGAAAAGGAGCGCAAGGCGGCCCTGCCTGCAGCCACAACCCCTGGCCAGGCTGGAGACT  
GCGGGCCCGCGGATGCCCGGCTGGGGCAGTGGTGGGCGGAGGGTCCCCGCGGGGCGCCCGGGCCGG  
TGCCCGCCCCGGTCTGTTGGGCCACTGCTGTGGGAGCGCACGCTGCCGTTTCGGCGATGTGGAGTACGT  
AGACCTGGACGCCTTCTGCTGGAGCACGGCTCCCGCCAGCCCGCCCGCCCGGTTGGCCGTCGCCG  
GAGCCGTCGCCCCGCGGACGCCCGCACCTCCCCAGGGCCGGTTCGTGCGGCTCGGCTTCCCCCGCT  
CCTCTCCTGGGCACGCCCGCCCGGGCTGCCCTCGGGACCGCCAGCGGCCACCGCGCAGGCTGACCTC  
TCGGGACACCCAGCCCTGTGGACCCAGACACCGTGGAGGTGTTGATGACCTTTGAACCCGACCCAGCT  
GATCTTGCCCTATCAAGCATTCTGGCCACGAGACCTTTGACCTCGAAGACATCGCTTCTCAGAAGAGG  
AACTTAAGCCCCAGCCAATCATGAAGAAGCAAGAAAAATCCAGGTGCCGGAGGAGCAGAAGGATGAGAA  
ATACTGGAGCCGGCGGTACAAGAACAACGAGGCAGCCAAGCGGTCCCGTGACCCCGCGGCTCAAGGAG  
AACCAGATATCGGTGCGGGCGCCTTCTGGAGAAGGAGAACGCCCTGCTGCGGCAGGAAGTTGTGGCCG  
TGCGCCAGGAGCTGTCCCACTACCGCGCCGTGCTGTCCCGATACCAGGCCAGCACGGGGCCCTG

**ACGCGT**ACGCGGCCGCTCGAGCAGAACTCATCTCAGAAGAGGATCTGGCAGCAATGATATCCTGGATT  
ACAAGGATGACGACGATAAGGTTTAA



[View online »](#)

**Protein Sequence:** >RC202051 representing NM\_001352  
Red=Cloning site Green=Tags(s)

MARPVSDRTPAPLLLGGPAGTPPGGGALLGLRSLQGTSKPKEPASCLLKEKERKAALPAATTPGPGLET  
 AGPADAPAGAVVGGGSPRGRPGVPAPGLLAPLLWERTLPFGDVEYVDLDAFLLEHGLPPSPPPGGPSP  
 EPSPARTPAPSPGPGSCGSASPRSSPGHAPARAALGTASGHRAGLTSRDTPSPVDPDTVEVLMTFEPDPA  
 DLALSSIPGHETFDRRRHRFSEEELKPQIMKKARKIQVPEEQKDEKYWSRRYKNNEAAKRSRDARRLKE  
 NQISVRAAFLEKENALLRQEVVAVRQELSHYRAVL SRYQAQHGAL

TRTRPLEQKLISEEDLAANDILDYKDDDDKV

**Chromatograms:** [https://cdn.origene.com/chromatograms/ja1469\\_d03.zip](https://cdn.origene.com/chromatograms/ja1469_d03.zip)

**Restriction Sites:** SgfI-MluI

**Cloning Scheme:**

Cloning sites used for ORF Shutting:



\* The last codon before the Stop codon of the ORF

**ACCN:** NM\_001352

**ORF Size:** 975 bp

**OTI Disclaimer:** The molecular sequence of this clone aligns with the gene accession number as a point of reference only. However, individual transcript sequences of the same gene can differ through naturally occurring variations (e.g. polymorphisms), each with its own valid existence. This clone is substantially in agreement with the reference, but a complete review of all prevailing variants is recommended prior to use. [More info](#)

**OTI Annotation:** This clone was engineered to express the complete ORF with an expression tag. Expression varies depending on the nature of the gene.

**Components:** The ORF clone is ion-exchange column purified and shipped in a 2D barcoded Matrix tube containing 10ug of transfection-ready, dried plasmid DNA (reconstitute with 100 ul of water).

**Reconstitution Method:**

1. Centrifuge at 5,000xg for 5min.
2. Carefully open the tube and add 100ul of sterile water to dissolve the DNA.
3. Close the tube and incubate for 10 minutes at room temperature.
4. Briefly vortex the tube and then do a quick spin (less than 5000xg) to concentrate the liquid at the bottom.
5. Store the suspended plasmid at -20°C. The DNA is stable for at least one year from date of shipping when stored at -20°C.

**RefSeq:** [NM\\_001352.5](#)

**RefSeq Size:** 1478 bp

**RefSeq ORF:** 978 bp

**Locus ID:** 1628

**UniProt ID:** [Q10586](#)

**Cytogenetics:** 19q13.33

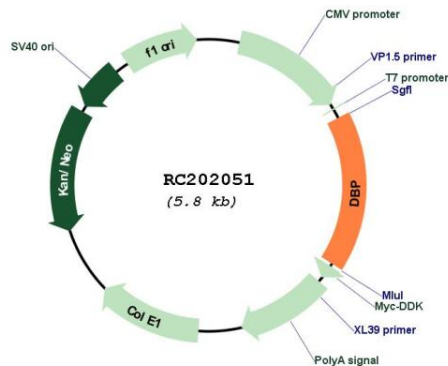
**Domains:** BRLZ

**Protein Families:** Transcription Factors

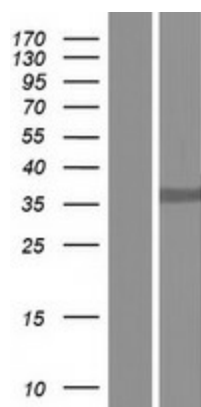
**MW:** 34.2 kDa

**Gene Summary:** The protein encoded by this gene is a member of the PAR bZIP transcription factor family and binds to specific sequences in the promoters of several genes, such as albumin, CYP2A4, and CYP2A5. The encoded protein can bind DNA as a homo- or heterodimer and is involved in the regulation of some circadian rhythm genes. [provided by RefSeq, Jul 2014]

## Product images:



Circular map for RC202051



Western blot validation of overexpression lysate (Cat# [LY419967]) using anti-DDK antibody (Cat# [TA50011-100]). Left: Cell lysates from untransfected HEK293T cells; Right: Cell lysates from HEK293T cells transfected with RC202051 using transfection reagent MegaTran 2.0 (Cat# [TT210002]).