

Product datasheet for **RC202038**

PAIP1 (NM_183323) Human Tagged ORF Clone

Product data:

Product Type:	Expression Plasmids
Product Name:	PAIP1 (NM_183323) Human Tagged ORF Clone
Tag:	Myc-DDK
Symbol:	PAIP1
Mammalian Cell Selection:	Neomycin
Vector:	pCMV6-Entry (PS100001)
E. coli Selection:	Kanamycin (25 ug/mL)



[View online »](#)

ORF Nucleotide Sequence:

>RC202038 ORF sequence
 Red=Cloning site Blue=ORF Green=Tags(s)

TTTTGTAATACGACTCACTATAGGGCGGCCGGGAATTCGTCGACTGGATCCGGTACCGAGGAGATCTGCC
 GCC**GCGATCGCC**

ATGTCGGACGGTTTCGATCGGGCCCCAGGTGCTGGTGGGCGCGGAGCCGGGGCCTGGGCCGCGGAGGGG
 GCGGGCCTGAGGGCGCGGTTTCCCGAACGGAGCGGGGCCTGCTGAGCGGCGCGGCACCCAGCCCGCA
 ACCCAAAGCCCCGGGCTTCTGCAGCCACCGCCGCTGCGCCAGCCAGGACGACCCCGCCGCCAGGGGCC
 CAGTGCAGAGTCCCCGCCAGCCCCAGCGGCTTCCCGGCCGGGGCGCTCCAGAGCAAACGAGGCCCC
 TGAGAGCTCCACCTAGTTCACAGGATAAAATCCCACAGCAGAATCGGAGTCAGCAATGGCTAAGCCCCA
 GGTGGTTGTAGCTCCTGTATTAATGTCTAAGCTGTCTGTGAATGCCCTGAATTTTACCCTTCAGTTAT
 TCTTCCAGTTACACAGAATCCTATGAGGATGGTTGTGAGGATTATCCTACTCTATCAGAATATGTTCAGG
 ATTTTTGAAATCATCTTACAGAGCAGCCTGGCAGTTTTGAAACTGAAATGAACAGTTTGCAGAGACCT
 GAATGGTTGTGTTACAACAGATGATGCTTTGCAAGAACTGTGGAATCATCTATCAACAGCCACATCT
 ATCCCAAATTTCTTATATGGGAGCTCGCCTGTGAATTACCTGTCCCATCATCTGACAATTAGCCAC
 AGAGTGGCAACTTCTGCCAATTGCTACTTCAAAGATGTCGGACTGAATATGAAGTTAAAGATCAAGCTGC
 AAAAGGGGATGAAGTTACTCGAAAACGATTTTCATGCATTTGACTCTTTCTGGGAGAAGTTTATCTTAAC
 CTGGAGATCAAGGGAACAAATGGACAGGTTACAAGAGCAGATATCTTCAGGTTGGTCTTCGAGAATTGC
 TGAATGCCCTGTTTTCTAATCCTATGGATGACAATTTAATTTGTGCAGTAAAATGTTAAAGTTGACAGG
 ATCAGTTTTGGAAGATGCTTGAAGGAAAAGGAAAGATGGATATGGAAGAAATATTAGAGAATTGAA
 AACGTTGCTTAGATGCAAACCTGCAGTAGAGATGTAACAGATGCTCTTGAAGCTGTAGAATCCGGT
 CAAGTAAGTGGGCAGAGTCCATGCAACTCAACATATAGAGAAGCAACACCAGAAAATGATCCTAACTA
 CTTTATGAATGAACCAACATTTTATACATCTGATGGTGTTCCTTCACTGCAGCTGATCCAGATTACCAA
 GAGAAATACCAAGAATTACTTGAAGAGAGGACTTTTTTCCAGATTATGAAGAAAATGGAACAGATTAT
 CCGGGGCTGGTATCCATACTTGGATGATATTGATGATGAGATGGACCCAGAGATAGAAGAAGCTTATGA
 AAAGTTTTGTTTGAATCAGAGCGTAAGCGAAAACAG

ACGCGTACGCGGCCGCTCGAGCAGAAACTCATCTCAGAAGAGGATCTGGCAGCAAATGATATCCTGGATT
 ACAAGGATGACGACGATAAGGTTTAA

Protein Sequence:

>RC202038 protein sequence
 Red=Cloning site Green=Tags(s)

MSDGFDRAPGAGRGRSRGLGRGGGPEGGGFPNGAGPAERARHQPPQPKAPGFLQPPPLRQPRTPPPGA
 QCEVPASPQRPSRPGALPEQTRPLRAPPSSQDKIPQQNSESAMAKQVVVAVVLMMSKLSVNAPEFYPSGY
 SSSYTESYEDGCEDYPTLSEYVQDFLNHLTEQPGSFETEIEQFAETLNGCVTTDDALQELVELIYQQATS
 IPNFSYMGARLCNYLSHHLTISPQSGNFCQLLQRCRTEYEVKDQAAKGDEVTRKRFHAFVFLGELYLN
 LEIKGTNGQVTRADILQVGLRELLNALFSNPMDDNLICAVKLLKLTGSVLEDAWKEKGKMDMEEIIQRIE
 NVVLDANCSRDKQMLLKLVELRSSNWGRVHATSTYREATPENDPNYFMNEPTFYTSDGVPFTAADPDYQ
 EKYQELLEREDFFPDYEENGTDL SGAGDPYLDDIDDEMDPEIEEAYEKFCLESERKRKQ

TRTRPLEQKLISEEDLAANDILDYKDDDDKV

Chromatograms:

https://cdn.origene.com/chromatograms/mk6306_c08.zip

Restriction Sites:

Sgfl-Mlul

Cloning Scheme:


ACCN: NM_183323

ORF Size: 1437 bp

OTI Disclaimer: The molecular sequence of this clone aligns with the gene accession number as a point of reference only. However, individual transcript sequences of the same gene can differ through naturally occurring variations (e.g. polymorphisms), each with its own valid existence. This clone is substantially in agreement with the reference, but a complete review of all prevailing variants is recommended prior to use. [More info](#)

OTI Annotation: This clone was engineered to express the complete ORF with an expression tag. Expression varies depending on the nature of the gene.

Components: The ORF clone is ion-exchange column purified and shipped in a 2D barcoded Matrix tube containing 10ug of transfection-ready, dried plasmid DNA (reconstitute with 100 ul of water).

Reconstitution Method:

1. Centrifuge at 5,000xg for 5min.
2. Carefully open the tube and add 100ul of sterile water to dissolve the DNA.
3. Close the tube and incubate for 10 minutes at room temperature.
4. Briefly vortex the tube and then do a quick spin (less than 5000xg) to concentrate the liquid at the bottom.
5. Store the suspended plasmid at -20°C. The DNA is stable for at least one year from date of shipping when stored at -20°C.

RefSeq Size: 2364 bp

RefSeq ORF: 1104 bp

Locus ID: 10605

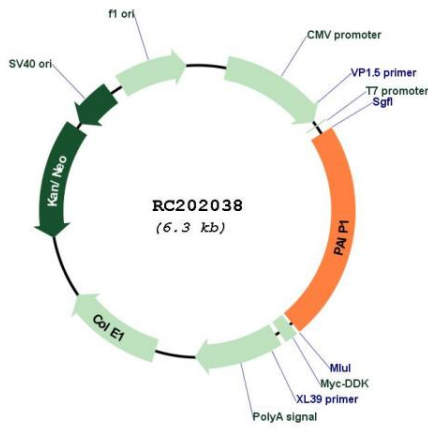
UniProt ID: [Q9H074](#)

Cytogenetics: 5p12

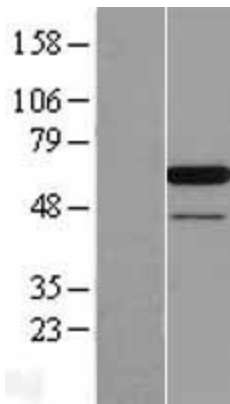
MW: 53.5 kDa

Gene Summary: The protein encoded by this gene interacts with poly(A)-binding protein and with the cap-binding complex eIF4A. It is involved in translational initiation and protein biosynthesis. Overexpression of this gene in COS7 cells stimulates translation. Alternative splicing occurs at this locus and three transcript variants encoding three distinct isoforms have been identified. [provided by RefSeq, Jul 2008]

Product images:



Circular map for RC202038



Western blot validation of overexpression lysate (Cat# [LY405243]) using anti-DDK antibody (Cat# [TA50011-100]). Left: Cell lysates from untransfected HEK293T cells; Right: Cell lysates from HEK293T cells transfected with RC202038 using transfection reagent MegaTran 2.0 (Cat# [TT210002]).