

Product datasheet for RC202030

PDCD6 (NM_013232) Human Tagged ORF Clone

Product data:

Product Type:	Expression Plasmids
Product Name:	PDCD6 (NM_013232) Human Tagged ORF Clone
Tag:	Myc-DDK
Symbol:	PDCD6
Synonyms:	ALG-2; ALG2; PEF1B
Mammalian Cell Selection:	Neomycin
Vector:	pCMV6-Entry (PS100001)
E. coli Selection:	Kanamycin (25 ug/mL)
ORF Nucleotide Sequence:	>RC202030 ORF sequence Red=Cloning site Blue=ORF Green=Tags(s)

TTTGTAAATACGACTCACTATAGGGCGGCCGGAATTCGTCGACTGGATCCGGTACCGAGGAGATCTGCC
 GCCCGCATCGCC

ATGGCCGCTACTCTTACCGCCCGGCCCTGGGGCCGGCCCTGGGCTGCTGCAGGCGGGCGCTGCCGG
 ACCAGAGCTTCTGTGGAACGTTTTCCAGAGGGTCGATAAAGACAGGAGTGGAGTGATATCAGACACCGA
 GCTTCAGCAAGCTCTCTCAACGGCACGTGGACTCCCTTAATCCAGTGACTGTCAGGTCGATCATATCC
 ATGTTTGACCGTGAGAACAGGGCGGCTGAACCTCAGCGAGTTCACGGGTGTGTGAAGTACATCACGG
 ACTGGCAGAACGCTTCCGCACGTACGACCGGGACAACCTCGGGATGATCGATAAGAACGAGCTGAAGCA
 GGCCCTCTCAGGTTTCGGCTACCGGCTCTCTGACCAGTTCACGACATCCTCATTGAAAGTTTGACAGG
 CAGGGACGGGGCAGATTGCCTTCGACGACTTCATCCAGGGCTGCATCGTCTGCAGAGGTTGACGGATA
 TATTCAGACGTTACGACACGGATCAGGACGGCTGGATTGAGGTGTCGTACGAACAGTACCTGTCCATGGT
 CTTCAATATCGTA

ACGCGTACGCGGCCGCTCGAGCAGAACTCATCTCAGAAGAGGATCTGGCAGCAAATGATATCCTGGATT
 ACAAGGATGACGACGATAAGGTTTAA

Protein Sequence:	>RC202030 protein sequence Red=Cloning site Green=Tags(s)
-------------------	--

MAAYSYPGPGAGPGPAAGAALPDQSFLWNVFQVRVDKDRSGVISDTELQQALSNGTWTPFNPVTVRSIIS
 MFDRENKAGVNFSEFTGVWKYITDWQNVFRTYDRDMSGMIDKNELKQALSGFGYRLSDQFHDILIRKFDR
 QGRGQIAFDDFIQGCIVLQRLTDIFRRYDQDQGWIQVSYEQYLSMVFSIV

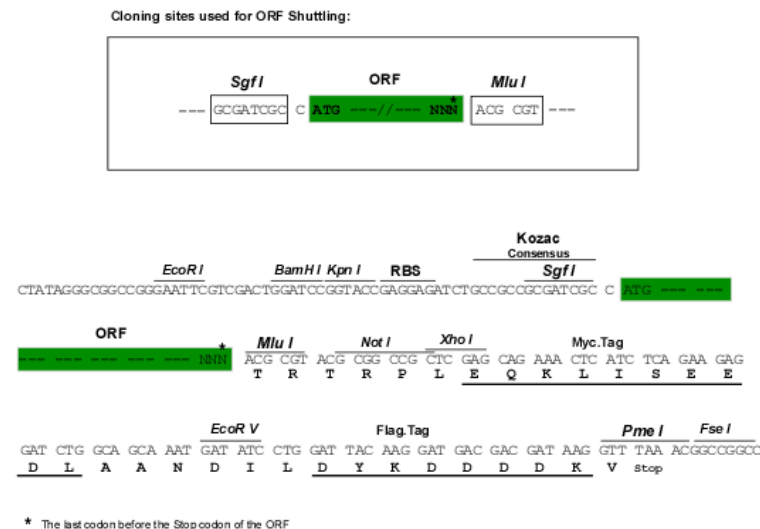
TRTRPLEQKLISEEDLAANDILDYKDDDDKV


[View online »](#)

Chromatograms: https://cdn.origene.com/chromatograms/mk6305_f09.zip

Restriction Sites: Sgfl-MluI

Cloning Scheme:



ACCN: NM 013232

ORF Size: 573 bp

OTI Disclaimer: Due to the inherent nature of this plasmid, standard methods to replicate additional amounts of DNA in E. coli are highly likely to result in mutations and/or rearrangements. Therefore, OriGene does not guarantee the capability to replicate this plasmid DNA. Additional amounts of DNA can be purchased from OriGene with batch-specific, full-sequence verification at a reduced cost. Please contact our customer care team at custsupport@origene.com or by calling 301.340.3188 option 3 for pricing and delivery.

The molecular sequence of this clone aligns with the gene accession number as a point of reference only. However, individual transcript sequences of the same gene can differ through naturally occurring variations (e.g. polymorphisms), each with its own valid existence. This clone is substantially in agreement with the reference, but a complete review of all prevailing variants is recommended prior to use. [More info](#)

OTI Annotation: This clone was engineered to express the complete ORF with an expression tag. Expression varies depending on the nature of the gene.

Components: The ORF clone is ion-exchange column purified and shipped in a 2D barcoded Matrix tube containing 10ug of transfection-ready, dried plasmid DNA (reconstitute with 100 ul of water).

Reconstitution Method:

1. Centrifuge at 5,000xg for 5min.
2. Carefully open the tube and add 100ul of sterile water to dissolve the DNA.
3. Close the tube and incubate for 10 minutes at room temperature.
4. Briefly vortex the tube and then do a quick spin (less than 5000xg) to concentrate the liquid at the bottom.
5. Store the suspended plasmid at -20°C. The DNA is stable for at least one year from date of shipping when stored at -20°C.

Note: Plasmids are not sterile. For experiments where strict sterility is required, filtration with 0.22um filter is required.

RefSeq: [NM_013232.4](#)

RefSeq Size: 1151 bp

RefSeq ORF: 576 bp

Locus ID: 10016

UniProt ID: [O75340](#)

Cytogenetics: 5p15.33

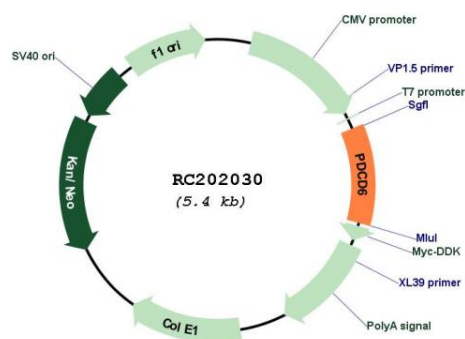
Domains: EFh

Protein Families: Druggable Genome

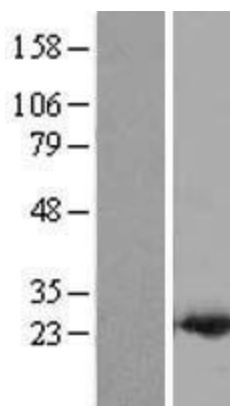
MW: 21.9 kDa

Gene Summary: This gene encodes a calcium-binding protein belonging to the penta-EF-hand protein family. Calcium binding is important for homodimerization and for conformational changes required for binding to other protein partners. This gene product participates in T cell receptor-, Fas-, and glucocorticoid-induced programmed cell death. In mice deficient for this gene product, however, apoptosis was not blocked suggesting this gene product is functionally redundant. Alternatively spliced transcript variants encoding multiple isoforms have been observed for this gene, and a pseudogene of this gene is also located on the short arm of chromosome 5. [provided by RefSeq, May 2012]

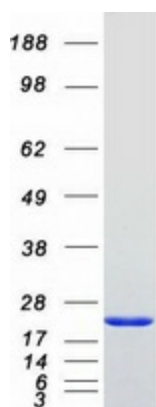
Product images:



Circular map for RC202030



Western blot validation of overexpression lysate (Cat# [LY415726]) using anti-DDK antibody (Cat# [TA50011-100]). Left: Cell lysates from untransfected HEK293T cells; Right: Cell lysates from HEK293T cells transfected with RC202030 using transfection reagent MegaTran 2.0 (Cat# [TT210002]).



Coomassie blue staining of purified PDCD6 protein (Cat# [TP302030]). The protein was produced from HEK293T cells transfected with PDCD6 cDNA clone (Cat# RC202030) using MegaTran 2.0 (Cat# [TT210002]).