

## Product datasheet for **RC202029L3V**

### Lysophospholipase 1 (LYPLA1) (NM\_006330) Human Tagged ORF Clone Lentiviral Particle

#### Product data:

Product Type:	Lentiviral Particles
Product Name:	Lysophospholipase 1 (LYPLA1) (NM_006330) Human Tagged ORF Clone Lentiviral Particle
Symbol:	Lysophospholipase 1
Synonyms:	APT-1; APT1; hAPT1; LPL-I; LPL1
Mammalian Cell Selection:	Puromycin
Vector:	pLenti-C-Myc-DDK-P2A-Puro (PS100092)
Tag:	Myc-DDK
ACCN:	NM_006330
ORF Size:	690 bp
ORF Nucleotide Sequence:	The ORF insert of this clone is exactly the same as(RC202029).
OTI Disclaimer:	The molecular sequence of this clone aligns with the gene accession number as a point of reference only. However, individual transcript sequences of the same gene can differ through naturally occurring variations (e.g. polymorphisms), each with its own valid existence. This clone is substantially in agreement with the reference, but a complete review of all prevailing variants is recommended prior to use. <a href="#">More info</a>
OTI Annotation:	This clone was engineered to express the complete ORF with an expression tag. Expression varies depending on the nature of the gene.
RefSeq:	<a href="#">NM_006330.2</a>
RefSeq Size:	2596 bp
RefSeq ORF:	693 bp
Locus ID:	10434
UniProt ID:	<a href="#">O75608</a>
Cytogenetics:	8q11.23
Domains:	abhydrolase_2
Protein Pathways:	Glycerophospholipid metabolism

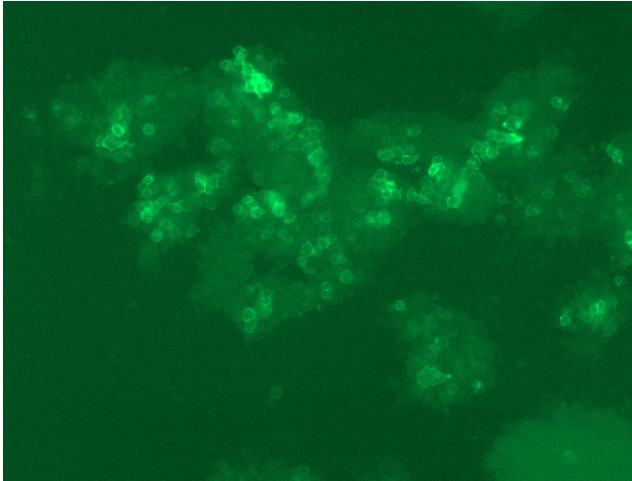


[View online »](#)

**MW:** 24.7 kDa

**Gene Summary:** This gene encodes a member of the alpha/beta hydrolase superfamily. The encoded protein functions as a homodimer, exhibiting both depalmitoylating as well as lysophospholipase activity, and may be involved in Ras localization and signaling. Alternate splicing results in multiple transcript variants. Pseudogenes of this gene have been defined on chromosomes 4, 6, and 7. [provided by RefSeq, Jul 2013]

**Product images:**



[RC202029L3] was used to prepare Lentiviral particles using [TR30037] packaging kit. HEK293T cells were transduced with RC202029L3V particle to overexpress human LYPLA1-Myc-DDK fusion protein.