

Product datasheet for RC202029

Lysophospholipase 1 (LYPLA1) (NM_006330) Human Tagged ORF Clone

Product data:

Product Type:	Expression Plasmids
Product Name:	Lysophospholipase 1 (LYPLA1) (NM_006330) Human Tagged ORF Clone
Tag:	Myc-DDK
Symbol:	Lysophospholipase 1
Synonyms:	APT-1; APT1; hAPT1; LPL-I; LPL1
Mammalian Cell Selection:	Neomycin
Vector:	pCMV6-Entry (PS100001)
E. coli Selection:	Kanamycin (25 ug/mL)
ORF Nucleotide Sequence:	>RC202029 ORF sequence Red=Cloning site Blue=ORF Green=Tags(s)

TTTTGTAATACGACTCACTATAGGGCGGCCGGAATTCGTCGACTGGATCCGGTACCGAGGAGATCTGCC
GCC**CGATCGCC**

ATGTGCGGCAATAACATGTCAACCCCGCTGCCCGCCATCGTGCCCGCCCGGGAAGGCCACCGCTGCGG
TGATTTTCCTGCATGGATTGGGAGATACTGGGCACGGATGGGCAGAAGCCTTTCAGGTATCAGAAGTTC
ACATATCAAATATATCTGCCCGCATGCGCCTGTTAGGCCGTTACATTAATATGAACGTGGCTATGCCT
TCATGGTTTGATATTATGGGCTTTCACCAGATTCACAGGAGGATGAATCTGGGATTAACAGGCAGCAG
AAAATATAAAAGCTTTGATTGATCAAGAAGTGAAGAATGGCATTCTTCTAACAGAATTATTTGGGAGG
GTTTTCTCAGGGAGGAGCTTTATCTTTATATACTGCCCTTACCACACAGCAGAACTGGCAGGTGTCACT
GCACTCAGTTGCTGGCTTCCACTTCGGGCTTCTTTCCACAGGGTCTATCGGTGGTGCTAATAGAGATA
TTTCTATTCTCCAGTGCCACGGGGATTGTGACCTTTGGTTCCCCTGATGTTGGTTCTCTACGGTGGA
AAAATAAAACATTGGTGAATCCAGCCAATGTGACCTTTAAACCTATGAAGGTATGATGCACAGTTCC
TGTCACAGGAAATGATGGATGTCAAGCAATTCATTGATAAACTCCTACCTCAATTGAT

ACGCGTACGCGGGCGCTCGAGCAGAACTCATCTCAGAAGAGGATCTGGCAGCAAATGATATCCTGGATT
ACAAGGATGACGACGATAAGGTTTAA



[View online »](#)

Protein Sequence: >RC202029 protein sequence
 Red=Cloning site Green=Tags(s)

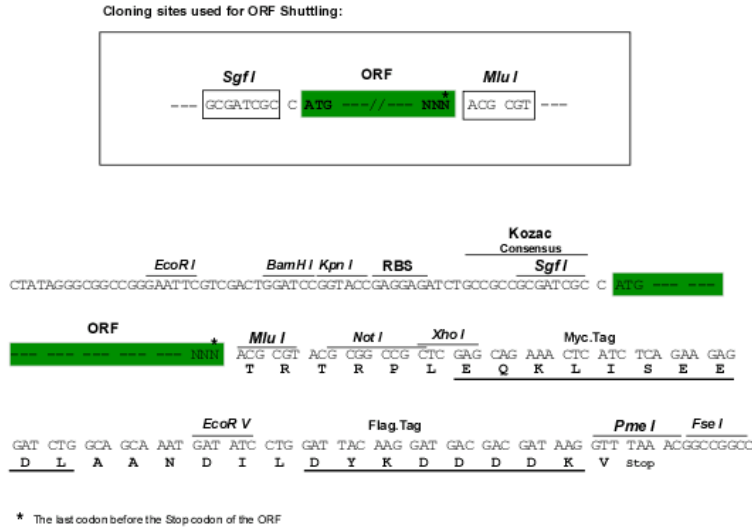
MCGNNMSTPLPAIVPAARKATAAVIFLHGLGDTGHGWAEAFAGIRSSHIKYYICPHAPVRPVTLMNMNVAMP
 SWFDIIGLSPDSQEDESIGKQAENIKALIDQEVKNGIPSNRIILGGFSQGGALSLYTALTTQQLAGVT
 ALSWLPLRASFPQGPPIGGANRDISILQCHGDCDPLVPLMFGSLTVEKCLKLVNPNANVTFKTYEGMMHSS
 CQEMMDVKQFIDKLLPPID

TRTRPLEQKLISEEDLAANDILDYKDDDDKV

Chromatograms: https://cdn.origene.com/chromatograms/mk6023_a01.zip

Restriction Sites: SgfI-MluI

Cloning Scheme:



ACCN: NM_006330

ORF Size: 690 bp

OTI Disclaimer: The molecular sequence of this clone aligns with the gene accession number as a point of reference only. However, individual transcript sequences of the same gene can differ through naturally occurring variations (e.g. polymorphisms), each with its own valid existence. This clone is substantially in agreement with the reference, but a complete review of all prevailing variants is recommended prior to use. [More info](#)

OTI Annotation: This clone was engineered to express the complete ORF with an expression tag. Expression varies depending on the nature of the gene.

Components: The ORF clone is ion-exchange column purified and shipped in a 2D barcoded Matrix tube containing 10ug of transfection-ready, dried plasmid DNA (reconstitute with 100 ul of water).

Reconstitution Method:

1. Centrifuge at 5,000xg for 5min.
2. Carefully open the tube and add 100ul of sterile water to dissolve the DNA.
3. Close the tube and incubate for 10 minutes at room temperature.
4. Briefly vortex the tube and then do a quick spin (less than 5000xg) to concentrate the liquid at the bottom.
5. Store the suspended plasmid at -20°C. The DNA is stable for at least one year from date of shipping when stored at -20°C.

Note: Plasmids are not sterile. For experiments where strict sterility is required, filtration with 0.22um filter is required.

RefSeq: [NM_006330.4](#)

RefSeq Size: 2596 bp

RefSeq ORF: 693 bp

Locus ID: 10434

UniProt ID: [O75608](#)

Cytogenetics: 8q11.23

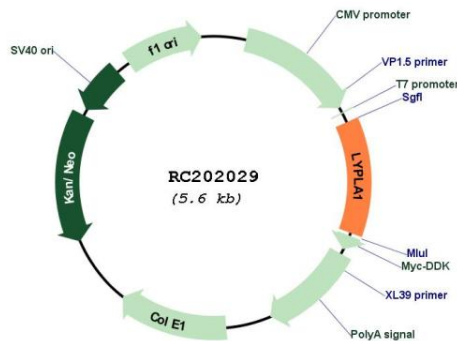
Domains: abhydrolase_2

Protein Pathways: Glycerophospholipid metabolism

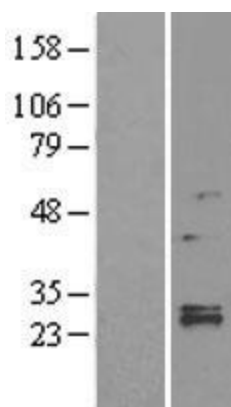
MW: 24.7 kDa

Gene Summary: This gene encodes a member of the alpha/beta hydrolase superfamily. The encoded protein functions as a homodimer, exhibiting both depalmitoylating as well as lysophospholipase activity, and may be involved in Ras localization and signaling. Alternate splicing results in multiple transcript variants. Pseudogenes of this gene have been defined on chromosomes 4, 6, and 7. [provided by RefSeq, Jul 2013]

Product images:



Circular map for RC202029



Western blot validation of overexpression lysate (Cat# [LY401905]) using anti-DDK antibody (Cat# [TA50011-100]). Left: Cell lysates from untransfected HEK293T cells; Right: Cell lysates from HEK293T cells transfected with RC202029 using transfection reagent MegaTran 2.0 (Cat# [TT210002]).