

Product datasheet for **RC202025**

PSMD10 (NM_002814) Human Tagged ORF Clone

Product data:

Product Type:	Expression Plasmids
Product Name:	PSMD10 (NM_002814) Human Tagged ORF Clone
Tag:	Myc-DDK
Symbol:	PSMD10
Synonyms:	dj889N15.2; p28; p28(GANK)
Mammalian Cell Selection:	Neomycin
Vector:	pCMV6-Entry (PS100001)
E. coli Selection:	Kanamycin (25 ug/mL)
ORF Nucleotide Sequence:	>RC202025 ORF sequence Red=Cloning site Blue=ORF Green=Tags(s)

TTTTGTAATACGACTCACTATAGGGCGCCGGGAATTCGTCGACTGGATCCGGTACCGAGGAGATCTGCC
GCC**CGATCGCC**

ATGGAGGGGTGTGTCTAACCTAATGGTCTGCAACCTGGCCTACAGCGGGAAGCTGGAAGAGTTGAAGG
AGAGTATTCTGGCCGATAAATCCCTGGCTACTAGAACTGACCAGGACAGCAGAAGTGCATTGCACTGGGC
ATGCTCAGCTGGACATACAGAAATTGTTGAATTTTGTGCAACTGGAGTGCCAGTGAATGATAAAGAC
GATGCAGGTTGGTCTCCTCTTCATATTGCGGCTTCTGCTGGCCGGGATGAGATTGAAAAGCCCTTCTGG
GAAAAGGTGCTCAAGTGAATGCTGTCAATCAAATGGCTGTACTCCCTTACATTATGCAGCTTCGAAAAA
CAGGCATGAGATCGCTGTCAATGTTACTGGAAGGCGGGCTAATCCAGATGCTAAGGACCATTATAGGGCT
ACAGCAATGCACCGGCAGCAGCCAAGGTAACCTGAAGATGATTCATATCCTTCTGTACTACAAAGCAT
CCACAAACATCCAAGACTGAGGGTAACCTCCTACACTTAGCCTGTGATGAGGAGAGAGTGGGAAGA
AGCAAACTGCTGGTGTCCCAAGGAGCAAGTATTACATTGAGAAATAAGAAGAAAAGACACCCCTGCAA
GTGGCCAAAGGTGGCCTGGGTTAATACTCAAGAGAATGGTGAAGGT

ACGCGTACGCGGCGCTCGAGCAGAACTCATCTCAGAAGAGGATCTGGCAGCAAATGATATCCTGGATT
ACAAGGATGACGACGATAAGGTTTAA



[View online »](#)

Protein Sequence: >RC202025 protein sequence
Red=Cloning site Green=Tags(s)

MEGCVSNLMVCNLAISGKLEELKESILADKSLATRTDQDSRTALHWACSAGHTEIVEFLLQLGVPVNDKD
 DAGWSPLHIAASAGRDEIVKALLGKGAQVNAVQNQCTPLHYAASKNRHEIAVMLLEGGANPDAKDHYEA
 TAMHRAAAKGNLKMIIHLLYYKASTNIQDTEGNTPLHLACDEERVEEAKLLVVSQGASIYIENKEEKTPLQ
 VAKGGLGLILKRMVEG

TRTRPLEQKLISEEDLAANDILDYKDDDDKV

Chromatograms: https://cdn.origene.com/chromatograms/mk6304_e08.zip

Restriction Sites: SgfI-MluI

Cloning Scheme:

Cloning sites used for ORF Shuttling:



* The last codon before the Stop codon of the ORF

ACCN: NM_002814

ORF Size: 678 bp

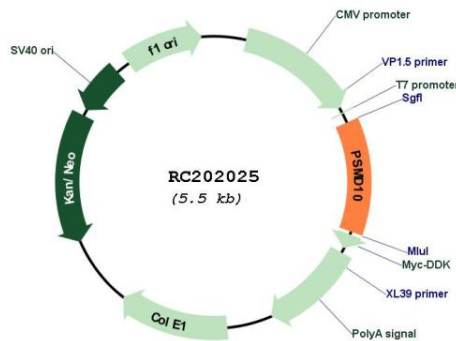
OTI Disclaimer: Due to the inherent nature of this plasmid, standard methods to replicate additional amounts of DNA in E. coli are highly likely to result in mutations and/or rearrangements. Therefore, OriGene does not guarantee the capability to replicate this plasmid DNA. Additional amounts of DNA can be purchased from OriGene with batch-specific, full-sequence verification at a reduced cost. Please contact our customer care team at custsupport@origene.com or by calling 301.340.3188 option 3 for pricing and delivery.

The molecular sequence of this clone aligns with the gene accession number as a point of reference only. However, individual transcript sequences of the same gene can differ through naturally occurring variations (e.g. polymorphisms), each with its own valid existence. This clone is substantially in agreement with the reference, but a complete review of all prevailing variants is recommended prior to use. [More info](#)

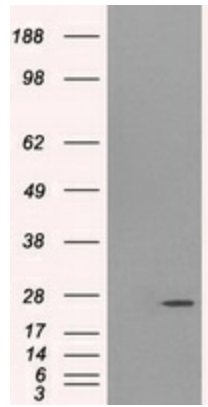
OTI Annotation: This clone was engineered to express the complete ORF with an expression tag. Expression varies depending on the nature of the gene.

Components:	The ORF clone is ion-exchange column purified and shipped in a 2D barcoded Matrix tube containing 10ug of transfection-ready, dried plasmid DNA (reconstitute with 100 ul of water).
Reconstitution Method:	<ol style="list-style-type: none"> 1. Centrifuge at 5,000xg for 5min. 2. Carefully open the tube and add 100ul of sterile water to dissolve the DNA. 3. Close the tube and incubate for 10 minutes at room temperature. 4. Briefly vortex the tube and then do a quick spin (less than 5000xg) to concentrate the liquid at the bottom. 5. Store the suspended plasmid at -20°C. The DNA is stable for at least one year from date of shipping when stored at -20°C.
RefSeq:	<u>NM_002814.4</u>
RefSeq Size:	1585 bp
RefSeq ORF:	681 bp
Locus ID:	5716
UniProt ID:	<u>O75832</u>
Cytogenetics:	Xq22.3
Domains:	ANK
MW:	24.4 kDa
Gene Summary:	This gene encodes a subunit of the PA700/19S complex, which is the regulatory component of the 26S proteasome. The 26S proteasome complex is required for ubiquitin-dependent protein degradation. This protein is a non-ATPase subunit that may be involved in protein-protein interactions. Aberrant expression of this gene may play a role in tumorigenesis. Two transcripts encoding different isoforms have been described. Pseudogenes have been identified on chromosomes 3 and 20.[provided by RefSeq, Mar 2011]

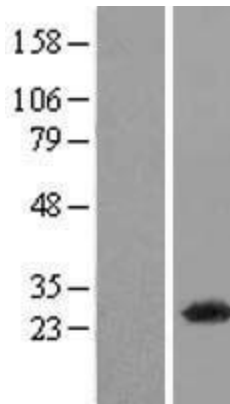
Product images:



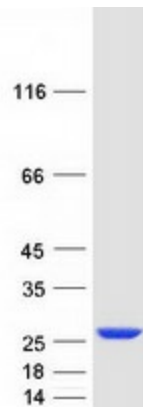
Circular map for RC202025



HEK293T cells were transfected with the pCMV6-ENTRY control (Cat# [PS100001], Left lane) or pCMV6-ENTRY PSMD10 (Cat# RC202025, Right lane) cDNA for 48 hrs and lysed. Equivalent amounts of cell lysates (5 ug per lane) were separated by SDS-PAGE and immunoblotted with anti-PSMD10(Cat# [TA500781]). Positive lysates [LY419094] (100ug) and [LC419094] (20ug) can be purchased separately from OriGene.



Western blot validation of overexpression lysate (Cat# [LY419094]) using anti-DDK antibody (Cat# [TA50011-100]). Left: Cell lysates from untransfected HEK293T cells; Right: Cell lysates from HEK293T cells transfected with RC202025 using transfection reagent MegaTran 2.0 (Cat# [TT210002]).



Coomassie blue staining of purified PSMD10 protein (Cat# [TP302025]). The protein was produced from HEK293T cells transfected with PSMD10 cDNA clone (Cat# RC202025) using MegaTran 2.0 (Cat# [TT210002]).