

Product datasheet for RC202015

ETS1 associated protein II (TDP2) (NM_016614) Human Tagged ORF Clone

Product data:

Product Type:	Expression Plasmids
Product Name:	ETS1 associated protein II (TDP2) (NM_016614) Human Tagged ORF Clone
Tag:	Myc-DDK
Symbol:	ETS1 associated protein II
Synonyms:	AD022; dj30M3.3; EAP2; EAPII; hTDP2; TTRAP
Mammalian Cell Selection:	Neomycin
Vector:	pCMV6-Entry (PS100001)
E. coli Selection:	Kanamycin (25 ug/mL)
ORF Nucleotide Sequence:	>RC202015 ORF sequence Red=Cloning site Blue=ORF Green=Tags(s)

TTTTGTAATACGACTCACTATAGGGCGGCCGGAATTCGTCGACTGGATCCGGTACCGAGGAGATCTGCC
GCC**CGATCGCC**

ATGGAGTTGGGGAGTTGCCTGGAGGGCGGGAGGGAGGCGCGGAGGAAGAGGGCGAGCCTGAGGTGAAAA
AGCGGCGACTTCTGTGTGGAGTTGCCTCGGTCGCAAGCTGCGATGCCGAGTGGCTCAGTCTCTCT
GGCCGAGAACGACTGGGAGATGGAAGGGCTCTGAACCTCTACTCGAGCCTCCGGTGGAGGAGAGCGCC
TTGGAACGCCGACTGAAACCATCTCTGAGCCCAAGACCTATGTTGACCTAACCAATGAAGAAACAACCTG
ATTCCACCACTTCTAAAATCAGCCCATCTGAAGATACTCAGCAAGAAAATGGCAGCATGTTCTCTCAT
TACCTGGAATATTGATGGATTAGATCTAAACAATCTGTCAGAGAGGGCTCGAGGGGTGTGTTCTACTTA
GCTTTGTACAGCCAGATGTGATATTTCTACAGGAAGTTATCCCCATATTATAGCTACCTAAAGAAGA
GATCAAGTAATTATGAGATTATTACAGGTCATGAAGAAGGATATTTACAGCTATAATGTTGAAGAAATC
AAGAGTGAAATAAAAAGCCAAGAGATTATTCCTTTTCCAAGTACCAAAATGATGAGAAACCTTTTATGT
GTGCATGTGAATGTGTCAGGAAATGAGCTTGCCTTATGACATCCCATTGGAGAGCACCAGAGGGCATG
CTGCGGAACGAATGAATCAGTTAAAAATGGTTTTAAAGAAAATGCAAGAGGCTCCAGAGTCAGCTACAGT
TATATTTGCAGGAGATACAAATTAAGGGATCGAGAGGTTACCAGATGTGGTGGTTTACCAACAACATT
GTGGATGCTGGGAGTTTTTGGCAAACCTAAACATTGCCAGTATACATGGGATACAAATGAACCTTA
ATCTTGAATAACTGCTGCTTGTAAACTTCGTTTTGATCGAATATTTTTTCAGAGCAGCAGAGAAGAGGG
ACACATTATCCCGAAGTTGGACCTTCTGGATTAGAAAAACTGGACTGTGGTAGATTTCCTAGTGAT
CACTGGGGTCTTCTGTGCAACTTAGATATAATATTG

ACGCGTACGCGGCCGCTCGAGCAGAAACTCATCTCAGAAGAGGATCTGGCAGCAATGATATCCTGGATT
ACAAGGATGACGACGATAAGGTTTAA



[View online »](#)

Protein Sequence: >RC202015 protein sequence
Red=Cloning site Green=Tags(s)

MELGSCLEGGREAAEEEGEPEVKKRRLLCVEFASVASCDAAVAQCFLAENDWEMERALNSYFEPPEESA
 LERRPETISEPKTYVDLTNEETDSTTSKISPESEDQENGSMFLITWNIDGLDLNLSERARGVCSYL
 ALYSPDVIFLQEVIPPYYSYLKKRSSNYEIIITGHEEGYFTAIMLKSRVKLKSQEIIPFPSTKMMRNLLC
 VHVNVSGNELCLMTSHLESTRGHAAERMNQLKMWLKKMQEAPESATVIFAGDTNLRDREVTRCGGLPNNI
 VDYWEFLGKPKHCQYTDWTQMNSNLGITAAKLRFDRIFFRAAAEEGHIIIPRSLDLLGLEKLD CGRFPSPD
 HWGLLCNLDIIL

TRTRPLEQKLISEEDLAANDILDYKDDDDKV

Chromatograms: https://cdn.origene.com/chromatograms/mk6306_h03.zip

Restriction Sites: SgfI-MluI

Cloning Scheme:



* The last codon before the Stop codon of the ORF

ACCN: NM_016614

ORF Size: 1086 bp

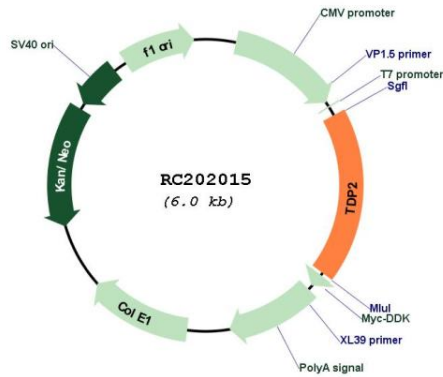
OTI Disclaimer: The molecular sequence of this clone aligns with the gene accession number as a point of reference only. However, individual transcript sequences of the same gene can differ through naturally occurring variations (e.g. polymorphisms), each with its own valid existence. This clone is substantially in agreement with the reference, but a complete review of all prevailing variants is recommended prior to use. [More info](#)

OTI Annotation: This clone was engineered to express the complete ORF with an expression tag. Expression varies depending on the nature of the gene.

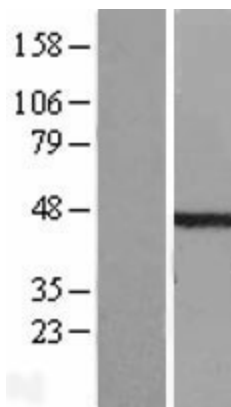
Components: The ORF clone is ion-exchange column purified and shipped in a 2D barcoded Matrix tube containing 10ug of transfection-ready, dried plasmid DNA (reconstitute with 100 ul of water).

Reconstitution Method:	<ol style="list-style-type: none">1. Centrifuge at 5,000xg for 5min.2. Carefully open the tube and add 100ul of sterile water to dissolve the DNA.3. Close the tube and incubate for 10 minutes at room temperature.4. Briefly vortex the tube and then do a quick spin (less than 5000xg) to concentrate the liquid at the bottom.5. Store the suspended plasmid at -20°C. The DNA is stable for at least one year from date of shipping when stored at -20°C.
Note:	Plasmids are not sterile. For experiments where strict sterility is required, filtration with 0.22um filter is required.
RefSeq:	NM_016614.3
RefSeq Size:	1940 bp
RefSeq ORF:	1089 bp
Locus ID:	51567
UniProt ID:	O95551
Cytogenetics:	6p22.3
Domains:	Exo_endo_phos
Protein Families:	Druggable Genome, Stem cell - Pluripotency, Transcription Factors
MW:	40.9 kDa
Gene Summary:	This gene encodes a member of a superfamily of divalent cation-dependent phosphodiesterases. The encoded protein associates with CD40, tumor necrosis factor (TNF) receptor-75 and TNF receptor associated factors (TRAFs), and inhibits nuclear factor-kappa-B activation. This protein has sequence and structural similarities with APE1 endonuclease, which is involved in both DNA repair and the activation of transcription factors. [provided by RefSeq, Jul 2008]

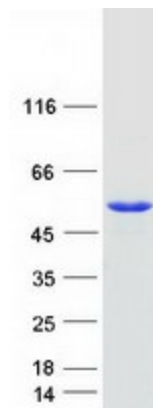
Product images:



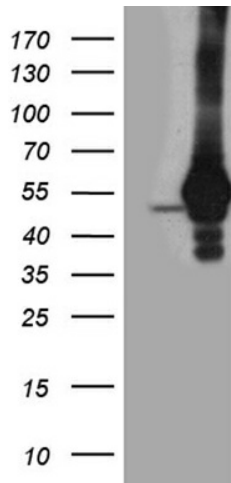
Circular map for RC202015



Western blot validation of overexpression lysate (Cat# [LY413867]) using anti-DDK antibody (Cat# [TA50011-100]). Left: Cell lysates from untransfected HEK293T cells; Right: Cell lysates from HEK293T cells transfected with RC202015 using transfection reagent MegaTran 2.0 (Cat# [TT210002]).



Coomassie blue staining of purified TDP2 protein (Cat# [TP302015]). The protein was produced from HEK293T cells transfected with TDP2 cDNA clone (Cat# RC202015) using MegaTran 2.0 (Cat# [TT210002]).



HEK293T cells were transfected with the pCMV6-ENTRY control (Cat# [PS100001], Left lane) or pCMV6-ENTRY TDP2 (Cat# RC202015, Right lane) cDNA for 48 hrs and lysed. Equivalent amounts of cell lysates (5 ug per lane) were separated by SDS-PAGE and immunoblotted with anti-TDP2 antibody (Cat# [TA811981]). Positive lysates [LY413867] (100ug) and [LC413867] (20ug) can be purchased separately from OriGene.