

Product datasheet for **RC202010**

Pea3 (ETV4) (NM_001079675) Human Tagged ORF Clone

Product data:

Product Type:	Expression Plasmids
Product Name:	Pea3 (ETV4) (NM_001079675) Human Tagged ORF Clone
Tag:	Myc-DDK
Symbol:	ETV4
Synonyms:	E1A-F; E1AF; PEA3; PEAS3
Mammalian Cell Selection:	Neomycin
Vector:	pCMV6-Entry (PS100001)
E. coli Selection:	Kanamycin (25 ug/mL)



[View online »](#)

ORF Nucleotide Sequence:

>RC202010 ORF sequence
 Red=Cloning site Blue=ORF Green=Tags(s)

TTTTGTAATACGACTCACTATAGGGCGGCCGGAATTCGTCGACTGGATCCGGTACCGAGGAGATCTGCC
 GCC**GCGATCGCC**

ATGGAGCGGAGGATGAAAGCCGATACTTGGACCAGCAAGTGCCTACACCTTCAGCAGCAAATCGCCCC
 GAAATGGGAGCTTGCSCGAAGCGCTGATCGGCCGCTGGGAAGCTCATGGACCCGGCTCCCTGCCGCC
 CCTCGACTCTGAAGATCTCTCCAGGATCTAAGTCACTTCCAGGAGACGTGGCTCGCTGAAGCTCAGGTA
 CCAGACAGTGTGAGCAGTTTGTCTGATTTCCATTAGAAAACCTAGCTTTCCACAGCCCCACCACCA
 GGATCAAGAAGGAGCCCCAGAGTCCCCGCACAGACCCGGCCCTGTCTGCAGCAGGAAGCCGCACTCCC
 CTACCACCATGGCGAGCAGTGCCTTTACTCCAGTGCCTATGACCCCCCAGACAAATCGCCATCAAGTCC
 CCTGCCCTGGTGCCTTGGACAGTCGCCCTACAGCCCTTTCCCGGGCAGAGCAACGGAATTTCTGGA
 GATCCTCTGGCACCTCCAGCCCCACCCTGGCCATGGGTACCTCGGGAACATAGCTCCGTCTTCCAGCA
 GCCCTGGACATTTGCCACTCCTCACATCTCAGGGAGGGGGCCGGAACCCCTCCAGCCCCCTACCAA
 CACCAGCTGTCCGAGCCCTGCCACCCTATCCCCAGCAGAGCTTTAAGCAAGAATACCATGATCCCTGT
 ATGAACAGGCGGGCCAGCCAGCCGTGGACCAGGGTGGGGTCAATGGGCACAGGTACCCAGGGCGGGGGT
 GGTGATCAAACAGGAACAGACGGACTTCGCCTACGACTCAGATGTACCAGGGTGCGCATCAATGTACCTC
 CACACAGAGGGCTTCTCTGGGCCCTCCAGGTGACGGGGCCATGGGCTATGGCTATGAGAACTCTGC
 GACCATTTCCAGATGATGTCTGCGTTGTCCCTGAGAAATTTGAAGGAGACATCAAGCAGGAAGGGGTCGG
 TGCATTTCCAGAGGGGCCGCCCTACCAGCGCCGGGTGCCCTGCAGCTGTGGCAATTTCTGGTGGCTTG
 CTGGATGACCCAAACAATGCCCATTTTATTGCCCTGGACGGGCCGGGAATGGAGTCAAGCTCATTGAGC
 CTGAGGAGGTGCGCAGGCTCTGGGCATCCAGAAGAACCAGCCAGCCATGAATTACGACAAGCTGAGCCG
 CTCGCTCCGATACTATTATGAGAAAGGCATCATGCAGAAGGTGGCTGGTGAAGCTTACGTGTACAAGTTT
 GTGTGTGAGCCCGAGGCCCTCTTCTTTGGCCTTCCCGACAATCAGCGTCCAGCTCTCAAGGCTGAGT
 TTGACCGGCTGTGAGTGAAGGACACAGTCCCTTTGTCCACTTGGATGAGAGCCCCGCTACCTCCC
 AGAGCTGGCTGGCCCCGCCAGCCATTTGGCCCCAAGGGTGGCTACTCTTAC

ACGCGTACGCGGCCGCTCGAGCAGAACTCATCTCAGAAGAGGATCTGGCAGCAAATGATATCTGGATT
 ACAAGGATGACGACGATAAGGTTTAA

Protein Sequence:

>RC202010 protein sequence
 Red=Cloning site Green=Tags(s)

MERRMKAGYLDQQVPTFFSSKSPGNGLREALIGPLGKLMDPGSLPPLDSEDLFQDLSHFQETWLAEAQV
 PDSDEQFVPDFHSENLAHFSPTRIKKEPQSPRTDPALSCSRKPPLPYHHGEQCLYSSAYDPPRQIAIKS
 PAPGALQSPQPFPRAEQRNFLRSSGTSQPHPGHGYLGEHSSVFQQPLDICHSTFSQGGGREPLPAPYQ
 HQLSEPCPPYPQSFKEQYHDPLYEQAGQPAVDQGGVNGHRYPGAGVVIKQEQTDFAYDSDVTGCASMYL
 HTEGFSGSPGDGAMGYEYKPLRPFDDVCVPEKFEQDIKQEGVGAFFREGPPYQRRGALQLWQFLVAL
 LDDPTNAHFIAWTGRGMEFKLIEPEEVARLWGIQKNRPAMNYDKLSRSLRYYYEKGIMQKVAGERVYVKF
 VCEPEALFSLAFPDNQRPAKAEFDRPVSEEDTVPLSHLDESPAYLPELAGPAQPFQPKGGYSY

TRTRPLEQKLISEEDLAANDILDYKDDDDKV

Chromatograms:

https://cdn.origene.com/chromatograms/mk6303_g01.zip

Restriction Sites:

Sgfl-Mlul

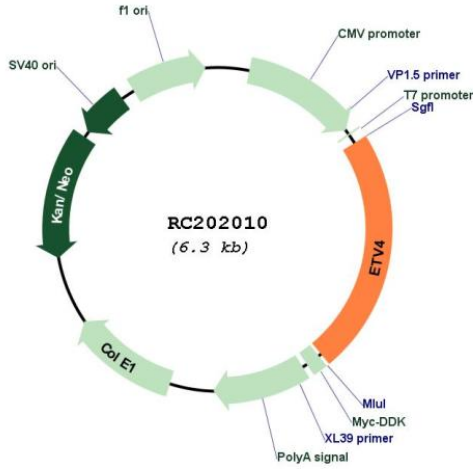
Cloning Scheme:

Cloning sites used for ORF Shutting:



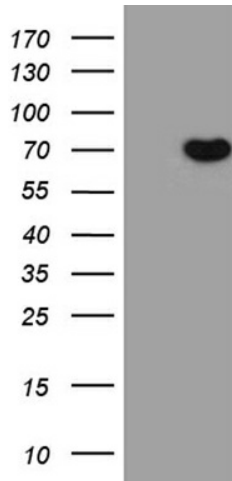
* The last codon before the Stop codon of the ORF

Plasmid Map:

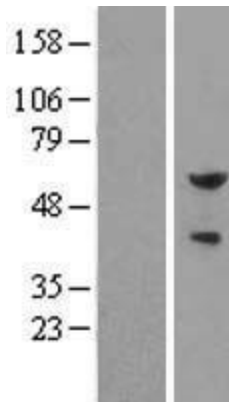


ACCN:	NM_001079675
ORF Size:	1452 bp
OTI Disclaimer:	The molecular sequence of this clone aligns with the gene accession number as a point of reference only. However, individual transcript sequences of the same gene can differ through naturally occurring variations (e.g. polymorphisms), each with its own valid existence. This clone is substantially in agreement with the reference, but a complete review of all prevailing variants is recommended prior to use. More info
OTI Annotation:	This clone was engineered to express the complete ORF with an expression tag. Expression varies depending on the nature of the gene.
Components:	The ORF clone is ion-exchange column purified and shipped in a 2D barcoded Matrix tube containing 10ug of transfection-ready, dried plasmid DNA (reconstitute with 100 ul of water).
Reconstitution Method:	<ol style="list-style-type: none">1. Centrifuge at 5,000xg for 5min.2. Carefully open the tube and add 100ul of sterile water to dissolve the DNA.3. Close the tube and incubate for 10 minutes at room temperature.4. Briefly vortex the tube and then do a quick spin (less than 5000xg) to concentrate the liquid at the bottom.5. Store the suspended plasmid at -20°C. The DNA is stable for at least one year from date of shipping when stored at -20°C.
RefSeq:	NM_001079675.5
RefSeq Size:	2469 bp
RefSeq ORF:	1455 bp
Locus ID:	2118
UniProt ID:	P43268
Cytogenetics:	17q21.31
Protein Families:	Druggable Genome, Transcription Factors
MW:	53.9 kDa
Gene Summary:	Transcriptional activator that binds to the enhancer of the adenovirus E1A gene; the core-binding sequence is 5'[AC]GGA[AT]GT-3'. [UniProtKB/Swiss-Prot Function]

Product images:



HEK293T cells were transfected with the pCMV6-ENTRY control (Cat# [PS100001], Left lane) or pCMV6-ENTRY ETV4 (Cat# RC202010, Right lane) cDNA for 48 hrs and lysed. Equivalent amounts of cell lysates (5 ug per lane) were separated by SDS-PAGE and immunoblotted with anti-ETV4 (Cat# [TA811432])(1:2000). Positive lysates [LY421534] (100ug) and [LC421534] (20ug) can be purchased separately from OriGene.



Western blot validation of overexpression lysate (Cat# [LY421534]) using anti-DDK antibody (Cat# [TA50011-100]). Left: Cell lysates from untransfected HEK293T cells; Right: Cell lysates from HEK293T cells transfected with RC202010 using transfection reagent MegaTran 2.0 (Cat# [TT210002]).