

Product datasheet for RC202009

DEPP1 (NM_007021) Human Tagged ORF Clone

Product data:

Product Type:	Expression Plasmids
Product Name:	DEPP1 (NM_007021) Human Tagged ORF Clone
Tag:	Myc-DDK
Symbol:	DEPP1
Synonyms:	C10orf10; DEPP; FIG; Fseg
Mammalian Cell Selection:	Neomycin
Vector:	pCMV6-Entry (PS100001)
E. coli Selection:	Kanamycin (25 ug/mL)
ORF Nucleotide Sequence:	>RC202009 ORF sequence Red=Cloning site Blue=ORF Green=Tags(s)

TTTTGTAATACGACTCACTATAGGGCGGCCGGAATTCGTCGACTGGATCCGGTACCGAGGAGATCTGCC
GCC**CGATCGCC**

ATGAGGTCCCGGCTTCTGCTCTCCGTGGCCATCTGCCACAATTCGGGAGACCACGGAGGAGATGCTGC
TTGGGGTCTGGACAGGAGCCCCACCCTCTCCTAGCCTGGATGACTACGTGAGGTCTATATCTCGACT
GGCACAGCCACCTCTGTGCTAGACAAGGCCACGGCCAGGGCCAACCCAGGCCACCCACAGGCCAGCC
CAGGCCTGCCGAAGGGCCGCCCTGCTGTGTCCCTGCGAGACATCACCGACGTTTCAGTGGCCAGCAGC
CCACACTGCCCATGGCTGATACTGTGGACCCCTGGACTGGCTTTTGGGGAGTCCAGGAAAAGCAGCC
AAGCCAGAGGGACTGCCAAGGAGGACTGGCCCTCTGCTGGCCTCTGGGGTCCACATAGACAGATGGAC
AGCAGCAAGCCATGGGGGCCCCAGAGGGAGGCTCTGTGAAGCCAGGATGCCTGGGCATTCCCTGGCAA
GACCACCGCAGGATGGGCAGCAGAGCTCTGACCTAAGAAGCTGGACTTTTGGGCAGTCTGCCAAGCCAT
GGCCTCCCGCCACCGCCCCGCCCCAGCAGTGTCTCAGAACACTCTACTCGCACCTCCCGGTGATCCAT
GAACTC

ACGCGTACGCGGGCCGCTCGAGCAGAACTCATCTCAGAAGAGGATCTGGCAGCAAATGATATCTGGATT
ACAAGGATGACGACGATAAGGTTTAA



[View online »](#)

Protein Sequence: >RC202009 protein sequence
 Red=Cloning site Green=Tags(s)

MRSRLLLSVAHLPTIRETTEEMLLGGPGQEPSPSLDDYVRSISRLAQPTSVLDKATAQGQPRPPHRPA
 QACRKGRPAVSLRDITARFSGQQPTLPMADTVDPDLDWLFGESQEKQPSQRDLPRRTGPSAGLWGPHRQMD
 SSKPMGAPRGRLLCEARMPGHSLARPPQDGGQSSDLRSWTFGQSAQAMASRHRPRPSSVLRLTYSHLPVIH
 EL

TRTRPLEQKLISEEDLAANDILDYKDDDDKV

Chromatograms: https://cdn.origene.com/chromatograms/mk6088_b09.zip

Restriction Sites: SgfI-MluI

Cloning Scheme:



ACCN: NM_007021

ORF Size: 636 bp

OTI Disclaimer: The molecular sequence of this clone aligns with the gene accession number as a point of reference only. However, individual transcript sequences of the same gene can differ through naturally occurring variations (e.g. polymorphisms), each with its own valid existence. This clone is substantially in agreement with the reference, but a complete review of all prevailing variants is recommended prior to use. [More info](#)

OTI Annotation: This clone was engineered to express the complete ORF with an expression tag. Expression varies depending on the nature of the gene.

Components: The ORF clone is ion-exchange column purified and shipped in a 2D barcoded Matrix tube containing 10ug of transfection-ready, dried plasmid DNA (reconstitute with 100 ul of water).

Reconstitution Method:

1. Centrifuge at 5,000xg for 5min.
2. Carefully open the tube and add 100ul of sterile water to dissolve the DNA.
3. Close the tube and incubate for 10 minutes at room temperature.
4. Briefly vortex the tube and then do a quick spin (less than 5000xg) to concentrate the liquid at the bottom.
5. Store the suspended plasmid at -20°C. The DNA is stable for at least one year from date of shipping when stored at -20°C.

RefSeq: [NM_007021.4](#)

RefSeq Size: 2060 bp

RefSeq ORF: 639 bp

Locus ID: 11067

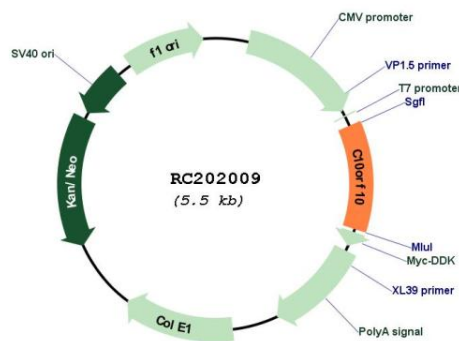
UniProt ID: [Q9NTK1](#)

Cytogenetics: 10q11.21

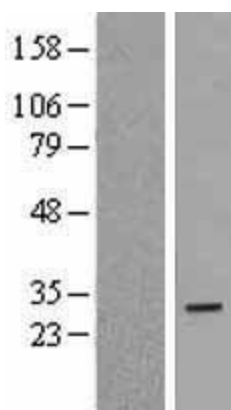
MW: 23.4 kDa

Gene Summary: The expression of this gene is induced by fasting as well as by progesterone. The protein encoded by this gene contains a t-synaptosome-associated protein receptor (SNARE) coiled-coil homology domain and a peroxisomal targeting signal. Production of the encoded protein leads to phosphorylation and activation of the transcription factor ELK1. [provided by RefSeq, Jul 2008]

Product images:



Circular map for RC202009



Western blot validation of overexpression lysate (Cat# [LY402081]) using anti-DDK antibody (Cat# [TA50011-100]). Left: Cell lysates from untransfected HEK293T cells; Right: Cell lysates from HEK293T cells transfected with RC202009 using transfection reagent MegaTran 2.0 (Cat# [TT210002]).