

Product datasheet for **RC202008**

Squalene Epoxidase (SQLE) (NM_003129) Human Tagged ORF Clone

Product data:

Product Type:	Expression Plasmids
Product Name:	Squalene Epoxidase (SQLE) (NM_003129) Human Tagged ORF Clone
Tag:	Myc-DDK
Symbol:	Squalene Epoxidase
Mammalian Cell Selection:	Neomycin
Vector:	pCMV6-Entry (PS100001)
E. coli Selection:	Kanamycin (25 ug/mL)



[View online »](#)

ORF Nucleotide Sequence:

>RC202008 ORF sequence
 Red=Cloning site Blue=ORF Green=Tags(s)

TTTTGTAATACGACTCACTATAGGGCGGCCGGAATTCGTCGACTGGATCCGGTACCGAGGAGATCTGCC
 GCC**CGCATCGCC**

ATGTGGACTTTTCTGGGCATTGCCACTTTCACCTATTTTTATAAGAAGTTCGGGGACTTCATCACTTTGG
 CCAACAGGGAGGTCTGTTGTGCGTGCTGGTGTTCCTCTCGCTGGGCCTGGTGCTCTCTACCGCTGTCG
 CCACCGAAACGGGGTCTCCTCGGGCGCCAGCAGAGCGGCTCCAGTTCGCCCTTCTCTCGGATATTCTC
 TCAGGCCCTGCCTTTCATTGGCTTCTCTGGGCCAAATCCCCCCTGAATCAGAAAATAAGGAGCAGCTCG
 AGGCCAGGAGGCGCAGAAAAGGAACCAATATTTAGAAAACAAGCTTAATAGGAACAGCTGCCTGTACATC
 AACATCTTCTCAGAATGACCCAGAAGTTATCATCGTGGGAGCTGGCGTGTGGCTGCTTTGGCAGCT
 GTGCTTCCAGAGATGGAAGAAAGGTGACAGTCATTGAGAGAGACTTAAAAGAGCCTGACAGAATAGTTG
 GAGAATCCTGCAGCCGGGTGGTTATCATGTTCTCAAAGACCTTGGTCTGGAGATACAGTGAAGGTCT
 TGATGCCAGGTTGTAATGGTTACATGATTCATGATCAGAAAAGCAAATCAGAGGTTGAGATTCCTTAC
 CCTCTGTCAGAAAACAATCAAGTGCAGAGTGAAGAGCTTCCATCACGGAAGATTCATCATGAGTCTCC
 GGAAAGCAGCTATGGCAGAGCCCAATGCAAGTATTGAAAGGTGTTGTGTACAGTTATTAGAGGAAGA
 TGATGTTGTGATGGGAGTTCAGTACAAGGATAAAGAGACTGGAGATATCAAGGAACCTCATGCTCCACTG
 ACTGTTGTTGAGATGGGCTTTTCTCCAAGTTCAGGAAAAGCCTGGTCTCCAATAAAGTTTCTGTATCAT
 CTCATTTTGTGGCTTTCTTATGAAGAATGCACCACAGTTTAAAGCAAATCATGCTGAACCTATTTTAGC
 TAACCCGAGTCCAGTTCATCTACCAGATTCATCCAGTGAAACTCGAGTACTGTTGACATTAGAGGA
 GAAATGCCAAGGAATTAAGAGAATACATGGTTGAAAAAATTTACCCACAATACCTGATCACCTGAAAG
 AACCATCTTAGAAGCCACTGACAATTCATCTGAGGTCATGCCAGCAAGCTTCCTTCTCTCTCATC
 AGTGAAGAAACGAGGTGTTCTTCTTTGGGAGACGCATATAATATGAGGCATCCACTTACTGGTGGAGGA
 ATGACTGTTGCTTTTAAAGATATAAAAATGAGGAAACTGCTAAAGGGTATCCCTGACCTTTATGATG
 ATGCAGCTATTTTCGAGGCCAAAAATCATTTTACTGGGCAAGAAAAACATCTCATTCTTTGTCGTGAA
 TATCCTTGCTCAGGCTCTTATGAATTATTTCTGCCACAGATGATTCCCTGCATCAACTAAGAAAAGCC
 TGTTTTCTTTATTTCAAACCTGGTGGCGAATGTGTGCGGGTCTGTTGGGCTGCTTTCTGTATTGTCTC
 CTAACCTCTAGTTTTAATTGGACTTCTTTGCTGTTGCAATCTATGCCGTGATTTTTGCTTTAAGTC
 AGAACCTTGGATTACAAAACCTCGAGCCCTTCTCAGTAGTGGTGTGATTGTACAAAGCGTGTCTGTA
 ATATTTCTCTAATTTACTCAGAAATGAAGTATATGGTTCAT

ACGCGTACGCGGGCCGCTCGAGCAGAAACTCATCTCAGAAGAGGATCTGGCAGCAAATGATATCCTGGATT
 ACAAGGATGACGACGATAAGGTTTAA

Protein Sequence:

>RC202008 protein sequence
 Red=Cloning site Green=Tags(s)

MWTFGLIATFTFYKFKGDFITLANREVLLCVLVFLSLGLVLSYRCRHRNGLLGRQQSGSQFALFSDIL
 SGLPFIGFFWAKSPPPESENKEQLEARRRRKGTNISETSLIGTAACTSTSSQNDPEVIIIVGAGVLGSALAA
 VLSRDGRKVTVIERDLKEPDRIVGEFLQPGGYHVLKDLGLGDTVEGLDAQVYVNGYMIHDQESKSEVQIPY
 PLSENNQVQSGRAFHHRFIMSLRKAAMAEPNAKFIEGVVLQLEEDDVVMGVQYKDKETGDIKELHAPL
 TVVADGLFSKFRKSLVSNKVSSSHVFGFLMKNAPQFKANHAELILANPSPVLIYQISSSETRVLVDIRG
 EMPRNLREYMVEKIYPQIPDHLKEPFLEATDNSHLRSMASFLPPSSVKKRGVLLLGDAYNMRHPLTGGG
 MTVAFKDIKLWRKLLKGIPLDYDDAAIFEAKSFYWARKTSHSFVNNILAQALYELFSATDDSLHQLRKA
 CFLYFKLGGECVAGPVGLLSVLSPNPLVLIGHFFAVAIYAVYFCFKSEPWITKPRALLSSGAVLYKACSV
 IFPLIYSEMKYMH

TRTRPLEQKLISEEDLAANDILDYKDDDDKV

Chromatograms:

https://cdn.origene.com/chromatograms/mk6305_h09.zip

Restriction Sites:

SgfI-MluI

Cloning Scheme:



ACCN: NM_003129

ORF Size: 1722 bp

OTI Disclaimer: The molecular sequence of this clone aligns with the gene accession number as a point of reference only. However, individual transcript sequences of the same gene can differ through naturally occurring variations (e.g. polymorphisms), each with its own valid existence. This clone is substantially in agreement with the reference, but a complete review of all prevailing variants is recommended prior to use. [More info](#)

OTI Annotation: This clone was engineered to express the complete ORF with an expression tag. Expression varies depending on the nature of the gene.

Components: The ORF clone is ion-exchange column purified and shipped in a 2D barcoded Matrix tube containing 10ug of transfection-ready, dried plasmid DNA (reconstitute with 100 ul of water).

Reconstitution Method:

1. Centrifuge at 5,000xg for 5min.
2. Carefully open the tube and add 100ul of sterile water to dissolve the DNA.
3. Close the tube and incubate for 10 minutes at room temperature.
4. Briefly vortex the tube and then do a quick spin (less than 5000xg) to concentrate the liquid at the bottom.
5. Store the suspended plasmid at -20°C. The DNA is stable for at least one year from date of shipping when stored at -20°C.

RefSeq: [NM_003129.4](#)

RefSeq Size: 2989 bp

RefSeq ORF: 1725 bp

Locus ID: 6713

UniProt ID: [Q14534](#)

Cytogenetics: 8q24.13

Domains: Monoxygenase

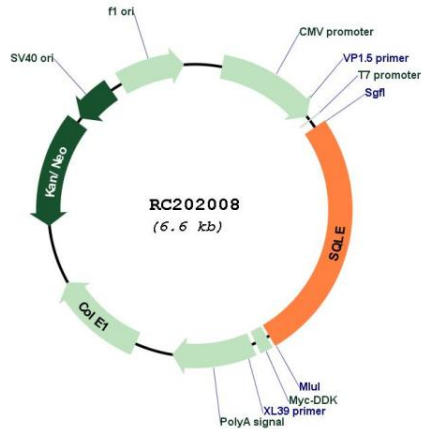
Protein Families: Druggable Genome, Transmembrane

Protein Pathways: Metabolic pathways, Steroid biosynthesis

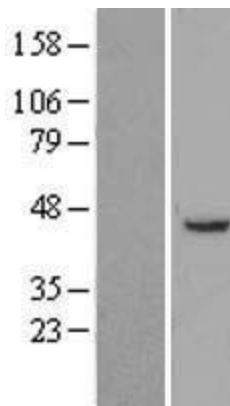
MW: 63.9 kDa

Gene Summary: Squalene epoxidase catalyzes the first oxygenation step in sterol biosynthesis and is thought to be one of the rate-limiting enzymes in this pathway. [provided by RefSeq, Jul 2008]

Product images:



Circular map for RC202008



Western blot validation of overexpression lysate (Cat# [LY418884]) using anti-DDK antibody (Cat# [TA50011-100]). Left: Cell lysates from untransfected HEK293T cells; Right: Cell lysates from HEK293T cells transfected with RC202008 using transfection reagent MegaTran 2.0 (Cat# [TT210002]).