

## Product datasheet for RC202005

### C1orf156 (METTL18) (NM\_033418) Human Tagged ORF Clone

#### Product data:

Product Type:	Expression Plasmids
Product Name:	C1orf156 (METTL18) (NM_033418) Human Tagged ORF Clone
Tag:	Myc-DDK
Symbol:	C1orf156
Synonyms:	AsTP2; C1orf156; HPM1
Mammalian Cell Selection:	Neomycin
Vector:	pCMV6-Entry (PS100001)
E. coli Selection:	Kanamycin (25 ug/mL)
ORF Nucleotide Sequence:	>RC202005 ORF sequence Red=Cloning site Blue=ORF Green=Tags(s)

TTTTGTAATACGACTCACTATAGGGCGCCGGGAATTCGTCGACTGGATCCGGTACCGAGGAGATCTGCC  
GCC**CGATCGCC**

ATGACCTTTCAGTTAAATTTCACTATAGAAGACCATCTGGAAAATGAATTAACACCCATTAGAGATGGAG  
CTTTGACCCTGGATTCTCAAAGAGCTGTCTCAGAAAGTCAAAAAGGAGAAGAGAGGGACAGAAA  
ATGTTCTGCAGAACAATTTGACTTGCCCTCAGGATCACTTGTGGGAACATAAGTCAATGGAAAATGCAGCT  
CCCTCTCAAGACACAGACAGTCCACTCAGTGCAGCCAGCAGTTCAAGGAAGTGGAGCCACATGGAAAAC  
AGCCCTCCTTGAGAGCTGCCAAAGAGCATGCTATGCCTAAAGATTTAAAGAAGATGTTAGAAAATAAAGT  
CATAGAAACATTACCAGTTTCCAGCATGTTAAGTTATCAGTAGTGAAAACCATCTGTTGAAAGAGAAC  
TTCCCTGGAGAAAACATAGTTTCAAAAAGCTTTTCTTCTCACTCTGATCTGATTACAGGTGTTTATGAGG  
GAGGCTTAAAAATCTGGGAATGTACCTTTGACCTCCTGGCTTATTTACAAAAGGCCAAAAGTAAAATTTGC  
TGGGAAAAAAGTCTGGATCTTGGTTGTGGATCAGGTTTACTAGGTATAACTGCATTCAAGGGAGGGTCC  
AAAGAAATTCACCTTCAAGATTAAACAGTATGGTATTGATGAAGTAACCTTACCTAATGTAGTAGCTA  
ACTCCACTTTGGAAGATGAAGAAAATGATGTAATGAGCCAGATGTGAAAAGATGCAGGAAACCAAAAGT  
AACACAATATAAATGCCGATTTTTTCTGGTGAGTGGTCTGAGTTTGTAAAGCTTGTACTAAGTAGT  
GAAAAACTTTTTGAAAATATGATCTCATTCTCACCTCAGAAACCATTTACAACCCAGATTATTAGTA  
ATTTGCACCAGACTTTCCTTAGACTGTTAAGTAAAAATGGACGTACTTTTGGCCAGCAAGACACATTA  
TTTTGGTGTAGGTGGAGGTGTTCACTCTTTTCAGAAAGTTGTAGAAAGAAAGAGATGTTTTTAAGACCAGA  
ATACTCAAATAATTGATGAAGGATTGAAGAGTTTATAATTGAAATAACTTTTAAAGTTTCTGGT

**ACGCGT**ACGCGGCCGCTCGAGCAGAAACTCATCTCAGAAGAGGATCTGGCAGCAAATGATATCCTGGATT  
ACAAGGATGACGACGATAAGGTTTAA



[View online »](#)



**Reconstitution Method:**

1. Centrifuge at 5,000xg for 5min.
2. Carefully open the tube and add 100ul of sterile water to dissolve the DNA.
3. Close the tube and incubate for 10 minutes at room temperature.
4. Briefly vortex the tube and then do a quick spin (less than 5000xg) to concentrate the liquid at the bottom.
5. Store the suspended plasmid at -20°C. The DNA is stable for at least one year from date of shipping when stored at -20°C.

**Note:** Plasmids are not sterile. For experiments where strict sterility is required, filtration with 0.22um filter is required.

**RefSeq:** [NM\\_033418.4](#)

**RefSeq Size:** 1487 bp

**RefSeq ORF:** 1119 bp

**Locus ID:** 92342

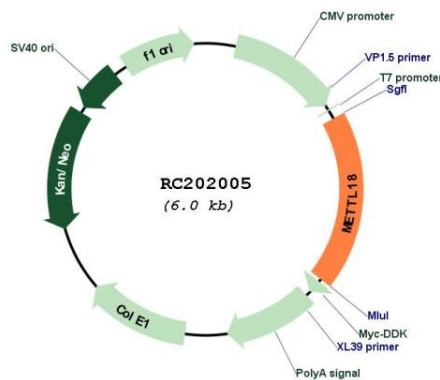
**UniProt ID:** [O95568](#)

**Cytogenetics:** 1q24.2

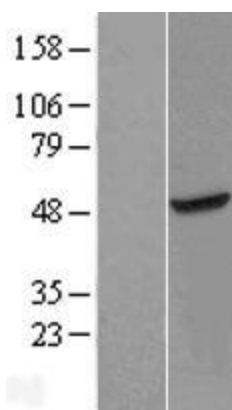
**MW:** 42.1 kDa

**Gene Summary:** Probable histidine methyltransferase.[UniProtKB/Swiss-Prot Function]

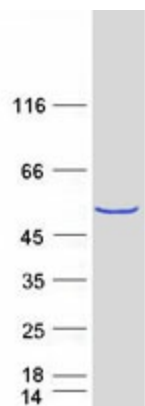
**Product images:**



Circular map for RC202005



Western blot validation of overexpression lysate (Cat# [LY409543]) using anti-DDK antibody (Cat# [TA50011-100]). Left: Cell lysates from untransfected HEK293T cells; Right: Cell lysates from HEK293T cells transfected with RC202005 using transfection reagent MegaTran 2.0 (Cat# [TT210002]).



Coomassie blue staining of purified METTL18 protein (Cat# [TP302005]). The protein was produced from HEK293T cells transfected with METTL18 cDNA clone (Cat# RC202005) using MegaTran 2.0 (Cat# [TT210002]).