

## Product datasheet for **RC201996**

### EDF1 (NM\_003792) Human Tagged ORF Clone

#### Product data:

**Product Type:** Expression Plasmids  
**Product Name:** EDF1 (NM\_003792) Human Tagged ORF Clone  
**Tag:** Myc-DDK  
**Symbol:** EDF1  
**Synonyms:** CFAP280; EDF-1; MBF1  
**Mammalian Cell Selection:** Neomycin  
**Vector:** pCMV6-Entry (PS100001)  
**E. coli Selection:** Kanamycin (25 ug/mL)  
**ORF Nucleotide Sequence:** >RC201996 ORF sequence  
Red=Cloning site Blue=ORF Green=Tags(s)

TTTTGTAATACGACTCACTATAGGGCGGCCGGAATTCGTCGACTGGATCCGGTACCGAGGAGATCTGCC  
GCC**CGATCGCC**

ATGGCCGAGAGCGACTGGGACACGGTGACGGTCTGCGCAAGAAGGGCCCTACGGCCGCCAGGCCAAAT  
CCAAGCAGGCTATCTTAGCGGCACAGAGACGAGGAGAAGATGTGGAGACTTCCAAGAAATGGGCTGCTGG  
CCAGAACAACAACATTCTATTACCAAGAACACGGCCAAGCTGGACCGGGAGACAGAGGAGCTGCACCAT  
GACAGGGTGACCCTGGAGGTGGCAAGGTGATCCAGCAAGGTCCGCGAGCAAGGGGCTTACGCAGAAGG  
ACCTGGCCACGAAAATCAATGAGAAGCCACAGGTGATCGCGGACTATGAGAGCGGACGGCCATACCCAA  
TAACCAGGTGCTTGGCAAAATCGAGCGGCCATTGGCCTCAAGCTCCGGGAAAGGACATTGGAAAGCCC  
ATCGAGAAGGGCCTAGGGCGAAA

**ACGCGT**ACGCGGCCGCTCGAGCAGAACTCATCTCAGAAGAGGATCTGGCAGCAAATGATATCCTGGATT  
ACAAGGATGACGACGATAAGGTTTAA

**Protein Sequence:** >RC201996 protein sequence  
Red=Cloning site Green=Tags(s)

MAESDWDVTVTLRKKGPTAAQAKSKQAILAAQRRGEDVETSKKWAAGQNKQHSITKNTAKLDRETEELHH  
DRVTLVEGKVIQQGRQSKGLTQKDLATKINEKPQVIADYESGRAIPNNQVLGKIERAIGLKLKRGKIDIGKP  
IEKGPRAK

**TR**TRPLEQKLISEEDLAANDILDYKDDDDKV

**Chromatograms:** [https://cdn.origene.com/chromatograms/mk6309\\_e08.zip](https://cdn.origene.com/chromatograms/mk6309_e08.zip)



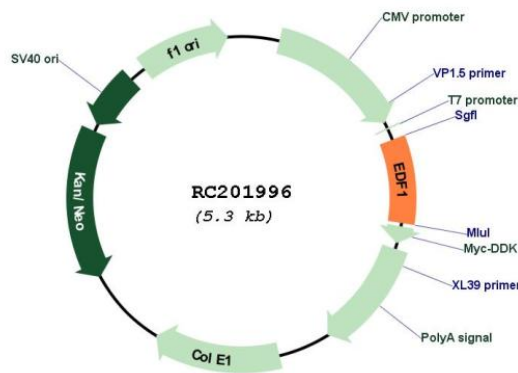
[View online >](#)

Restriction Sites: SgfI-MluI

Cloning Scheme:



Plasmid Map:



ACCN: NM\_003792

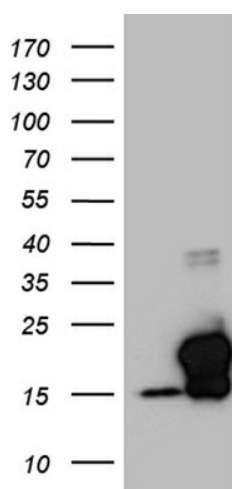
ORF Size: 444 bp

OTI Disclaimer: The molecular sequence of this clone aligns with the gene accession number as a point of reference only. However, individual transcript sequences of the same gene can differ through naturally occurring variations (e.g. polymorphisms), each with its own valid existence. This clone is substantially in agreement with the reference, but a complete review of all prevailing variants is recommended prior to use. [More info](#)

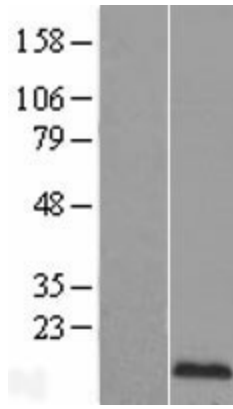
OTI Annotation: This clone was engineered to express the complete ORF with an expression tag. Expression varies depending on the nature of the gene.

<b>Components:</b>	The ORF clone is ion-exchange column purified and shipped in a 2D barcoded Matrix tube containing 10ug of transfection-ready, dried plasmid DNA (reconstitute with 100 ul of water).
<b>Reconstitution Method:</b>	<ol style="list-style-type: none"><li>1. Centrifuge at 5,000xg for 5min.</li><li>2. Carefully open the tube and add 100ul of sterile water to dissolve the DNA.</li><li>3. Close the tube and incubate for 10 minutes at room temperature.</li><li>4. Briefly vortex the tube and then do a quick spin (less than 5000xg) to concentrate the liquid at the bottom.</li><li>5. Store the suspended plasmid at -20°C. The DNA is stable for at least one year from date of shipping when stored at -20°C.</li></ol>
<b>RefSeq:</b>	<a href="#">NM_003792.4</a>
<b>RefSeq Size:</b>	701 bp
<b>RefSeq ORF:</b>	447 bp
<b>Locus ID:</b>	8721
<b>UniProt ID:</b>	<a href="#">O60869</a>
<b>Cytogenetics:</b>	9q34.3
<b>Domains:</b>	HTH_3
<b>Protein Families:</b>	Druggable Genome, Transcription Factors
<b>MW:</b>	16.4 kDa
<b>Gene Summary:</b>	This gene encodes a protein that may regulate endothelial cell differentiation, lipid metabolism, and hormone-induced cardiomyocyte hypertrophy. The encoded protein has also been found to act as a transcriptional coactivator by interconnecting the general transcription factor TATA element-binding protein (TBP) and gene-specific activators. Alternate splicing results in multiple transcript variants. [provided by RefSeq, Jul 2013]

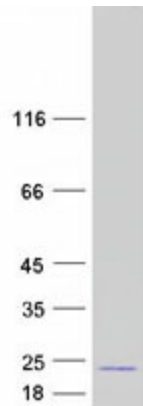
### Product images:



HEK293T cells were transfected with the pCMV6-ENTRY control (Cat# [PS100001], Left lane) or pCMV6-ENTRY EDF1 (Cat# RC201996, Right lane) cDNA for 48 hrs and lysed. Equivalent amounts of cell lysates (5 ug per lane) were separated by SDS-PAGE and immunoblotted with anti-EDF1 (Cat# [TA810789])(1:2000). Positive lysates [LY418427] (100ug) and [LC418427] (20ug) can be purchased separately from OriGene.



Western blot validation of overexpression lysate (Cat# [LY418427]) using anti-DDK antibody (Cat# [TA50011-100]). Left: Cell lysates from untransfected HEK293T cells; Right: Cell lysates from HEK293T cells transfected with RC201996 using transfection reagent MegaTran 2.0 (Cat# [TT210002]).



Coomassie blue staining of purified EDF1 protein (Cat# [TP301996]). The protein was produced from HEK293T cells transfected with EDF1 cDNA clone (Cat# RC201996) using MegaTran 2.0 (Cat# [TT210002]).